



BEDROCK
— DETROIT —

Core and Shell
Building Upgrades
1515/1529 Woodward Ave
Detroit, MI 48226

NEW WORK KEY NOTES

- 1 REINFORCED CONCRETE BLOCK WALL @ INLINED WALL, SEE STRUCTURAL DRAWING S100 FOR DETAILS
- 2 EXISTING FOUNDATION WALL WITH WATER PROOFING, REFER TO SPECS
- 3 STRUCTURAL SLAB INFL @ ABANDONED ELEVATOR PITS, REFER TO STRUCTURAL DRAWING S100 FOR DETAILS
- 4 CONCRETE ON METAL DECKING INFL, SEE STRUCTURAL DRAWING S100 FOR DETAILS
- 5 NEW OPENING AT EXISTING WORKER WALL, SEE STRUCTURAL DRAWINGS FOR TYPICAL LAYOUT/INLET SCHEDULE
- 6 EXISTING COLUMN, REMOVE ALL FINISHES TO EXPOSE CONCRETE
- 7 EXISTING CLAY TILE WALL CONSTRUCTION WITH PLASTER
- 8 4" CONCRETE JOIST/SHEATHING PANEL, CONFORM WITH APPROVED ARCHITECTURAL FINISHES FOR FINISHES
- 9 SPARSE LOOSE PAINT OFF OF PLASTER PRIOR TO PAINTING HISTORIC SHAPED CASE WALLS
- 10 CLEAN EXISTING EXTERIOR HISTORIC EXTRUDED ALUM. WALLS, RAIL SILL TO BE PAINTED
- 11 CLEAN AND POLISH EXISTING TERRAZZO FLOORING, TRIMMS AND BRESS
- 12 FLOORING CONCRETE FILL, REFER TO STRUCTURAL DRAWING S100 FOR DETAILS
- 13 EXISTING CONCRETE TREADS/STAIRS TO REMAIN, INSTALL NEW 1 1/2" COB. FEE. RAIL, GRAB BARS, HANDRAILS
- 14 EXISTING MASONRY STAMMEL CONSTRUCTION TO REMAIN
- 15 EXISTING CONCRETE SLAB TO REMAIN, CLEAN AND SEAL
- 16 NEW REINFORCED CONCRETE WALLS 2.00' BY 2.00' STACKED 3 HIGH

PARTITION LEGEND

- | | | | |
|--|---|--|---|
| | 1 HR. U90S CMU WALL W/ LOOSE FILL TO DECK ABOVE | | 3 5/8" METAL STUDS @ 16" O.C. W/ 5/8" GYP BRD ONE SIDE ONLY 1" TO DECK ABOVE |
| | 1 HR. CONCRETE BLOCK WALL TO UNDERSIDE OF DECK ABOVE | | 1 HR. U412 2 HOUR NON LOAD BEARING PARTITION METAL STUDS @ 1/2" SPACED 24" O.C. TO DECK ABOVE |
| | 1 HR. WALL TO U419 NON LOAD BEARING C GYP BRD BOTH SIDES TO UNDERSIDE OF DECK | | 1 HR. WALL TO U419 NON LOAD BEARING 5/8" TYPE C GYP BRD BOTH SIDES TO UNDERSIDE OF DECK |
| | 2 HR. COLUMN ENCLOSURE DESIGN NO. X517 5/8" METAL STUDS W/ (2) LIVERS 5/8" GYP BRD. TO DECK ABOVE | | 3 5/8" COMMON BRICK PARTNER ANCHORED TO 6" CMU SPACED 16" O.C. WITH EXPOSED FACE. |
| | 2 HR. NON LOAD BEARING SHIRT WALL ON 2 1/2" C-H STUDS, 2599, SPACED AT 24" O.C. | | COMMON FACE BRICK TO MATCH ADJACENT EXISTING, 1 1/2" METAL STUDS @ 16" O.C. W/ 5/8" GYP BRD (2) LIVERS 5/8" GYP BRD (MINI INTERIOR) |
| | 3 5/8" METAL STUDS @ 16" O.C. W/ 5/8" GYP BRD ONE SIDE ONLY 1" BATT INSULATION TO DECK ABOVE | | 2 HR. COLUMN ENCLOSURE DESIGN NO. X517 5/8" METAL STUDS W/ (2) LIVERS 5/8" GYP BRD. TO DECK ABOVE |
| | 1 HR. WALL TO U419 NON LOAD BEARING 5/8" TYPE C GYP BRD BOTH SIDES TO UNDERSIDE OF DECK | | 3 5/8" METAL STUDS @ 16" O.C. W/ 5/8" GYP BRD BOTH SIDES TO U/S OF DECK ABOVE |
| | 1 HR. U90S CMU WALL W/ LOOSE FILL TO DECK ABOVE | | 3 5/8" METAL STUDS @ 16" O.C. W/ 5/8" GYP BRD |

PLAN LEGEND

- EXISTING CONSTRUCTION
- NEW CONSTRUCTION
- FIGURE CONSTRUCTION
- EXISTING DOOR
- NEW DOOR
- INDICATES CARD READER
- PARTITION TYPE, SEE SHEET A501 FOR DETAILS
- ROOM NAME AND NUMBER
- DOOR NUMBER

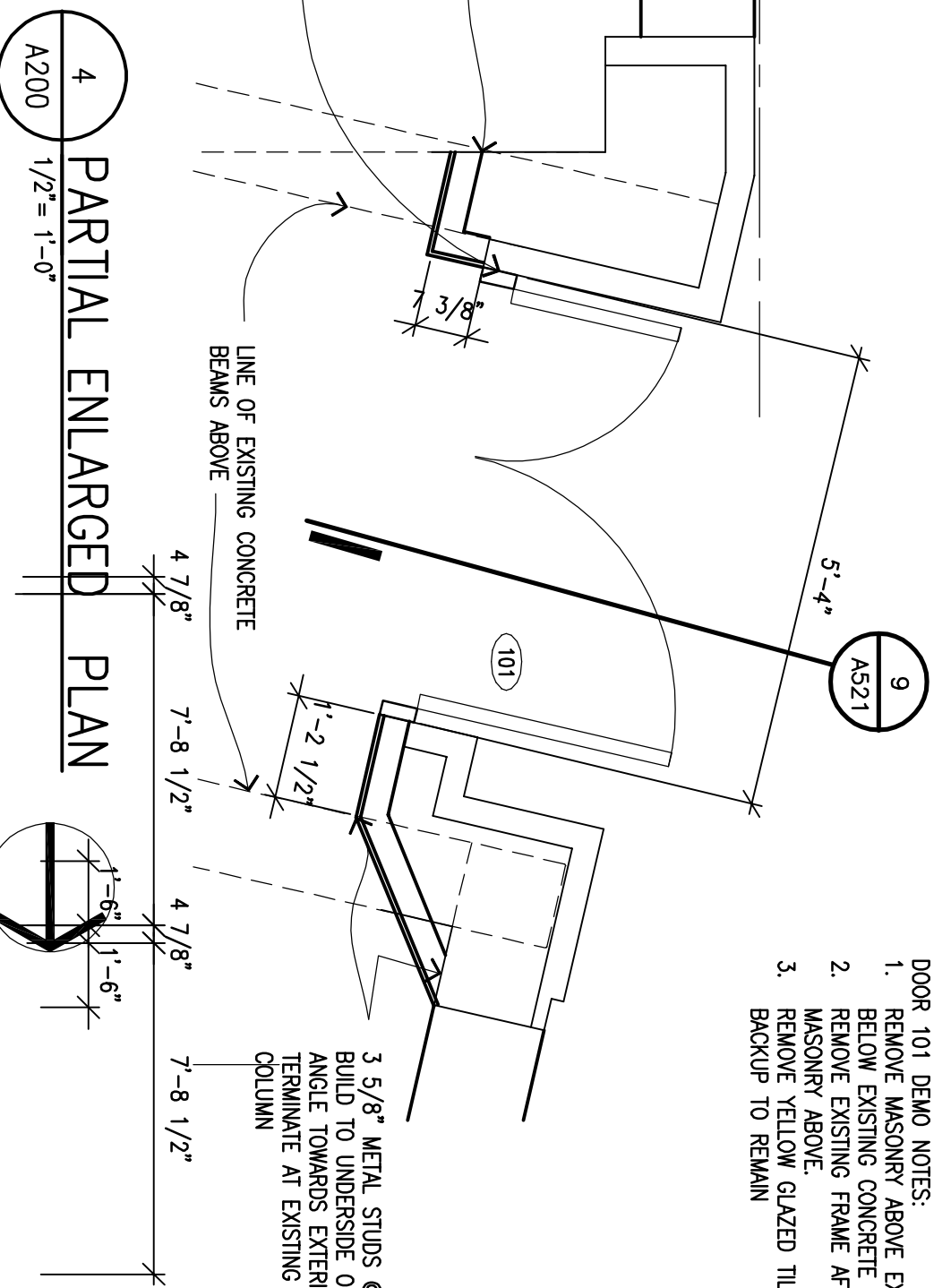
PARTITION NOTES:

ALL WOOD PARTITION AND PARTITION BACKSUPPORTS SHALL BE NON-COMBUSTIBLE

GENERAL NOTES:

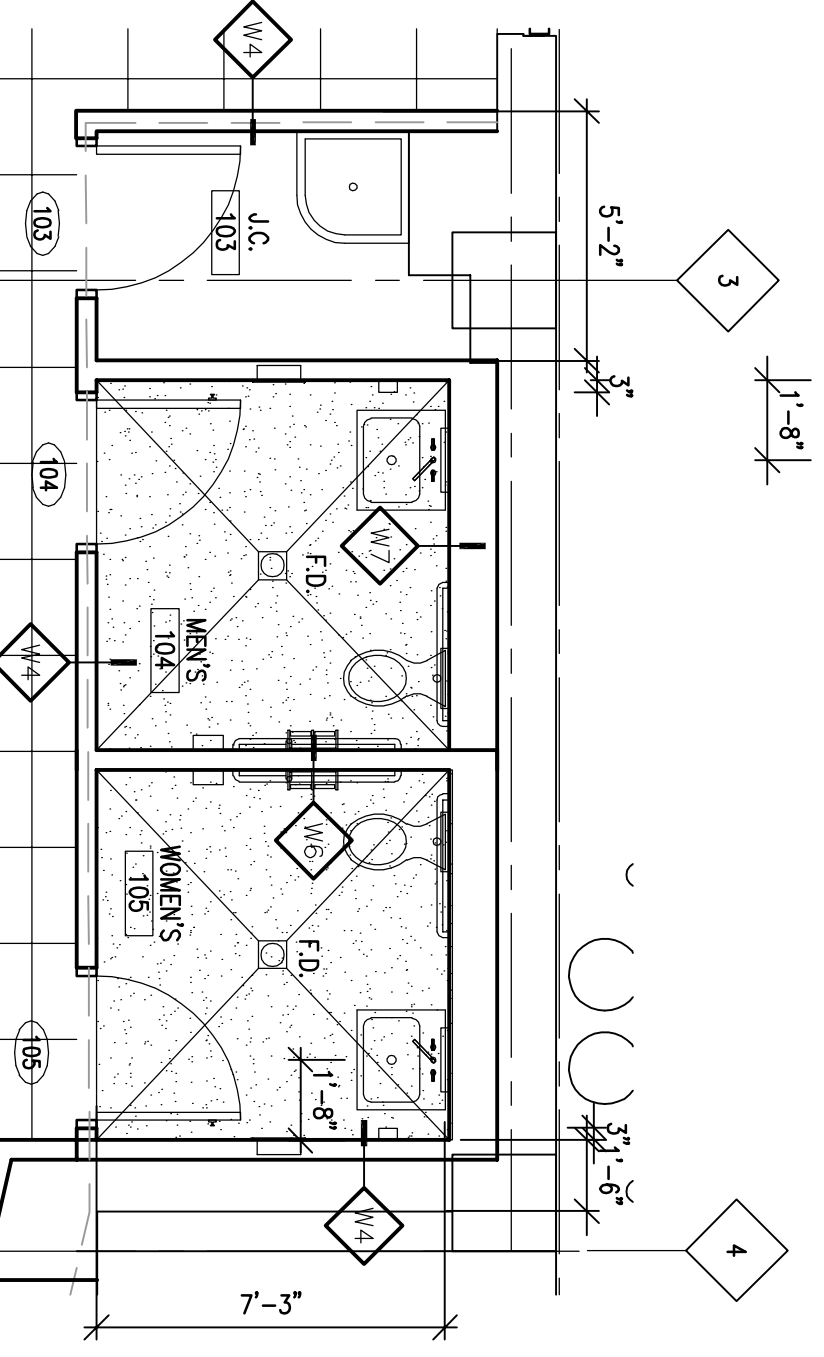
PARTY CORNERS AND MONUMENTARY SURFACES ON FACE OF COLUMN

- DOOR, 101, DEMO NOTES:**
1. REMOVE MASONRY ABOVE EXISTING FRAME.
 2. REMOVE EXISTING FRAME AFTER REMOVAL OF MASONRY ABOVE. MAINTAIN THE MASONRY BRICK ABOVE TO REMAIN.
 3. 3/8" METAL STUDS @ 16" O.C. BUILT TO UNDERSIDE OF BEAM AND TERMINATE AT EXISTING EXPOSED COLUMN.



TOILET ACCESSORIES

- 1 PAPER TOWEL DISPENSER
- 2 WASTE RECEPTACLE
- 3 SANITARY NAPKIN/TAMPON VENDOR
- 4 SOAP DISPENSER
- 5 MIRROR
- 6 TOILET TISSUE DISPENSER
- 7 SANITARY NAPKIN DISPOSAL
- 8 TOILET SEAT COVER DISPENSER
- 9 GRAB BARS (X3)
- 10 HOOK
- 11 TRASH RECEPTACLE



PARTIAL ENLARGED PLAN

A200 1/4"=1'-0"

PARTIAL ENLARGED PLAN

A200 1/4"=1'-0"

PARTIAL ENLARGED PLAN

A200 1/4"=1'-0"

PARTIAL ENLARGED PLAN

A200 1/4"=1'-0"

PARTIAL ENLARGED PLAN

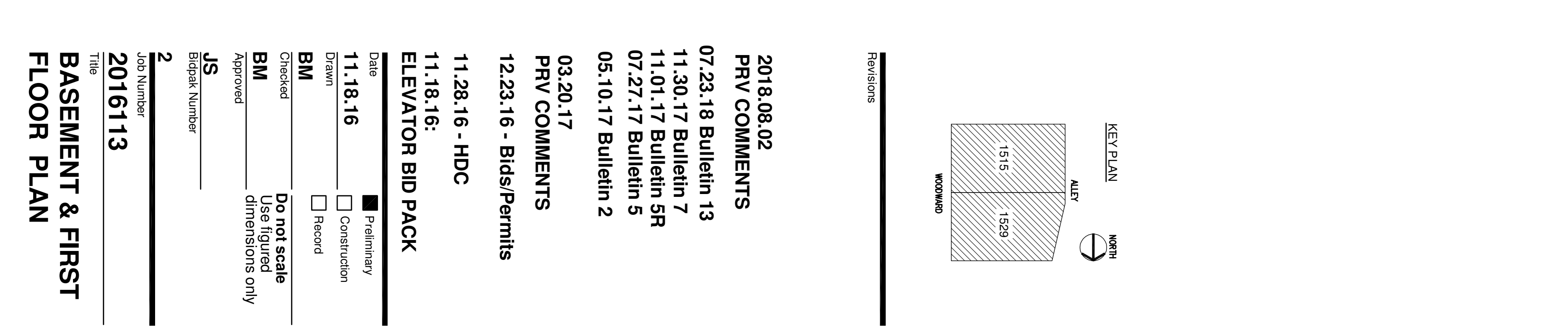
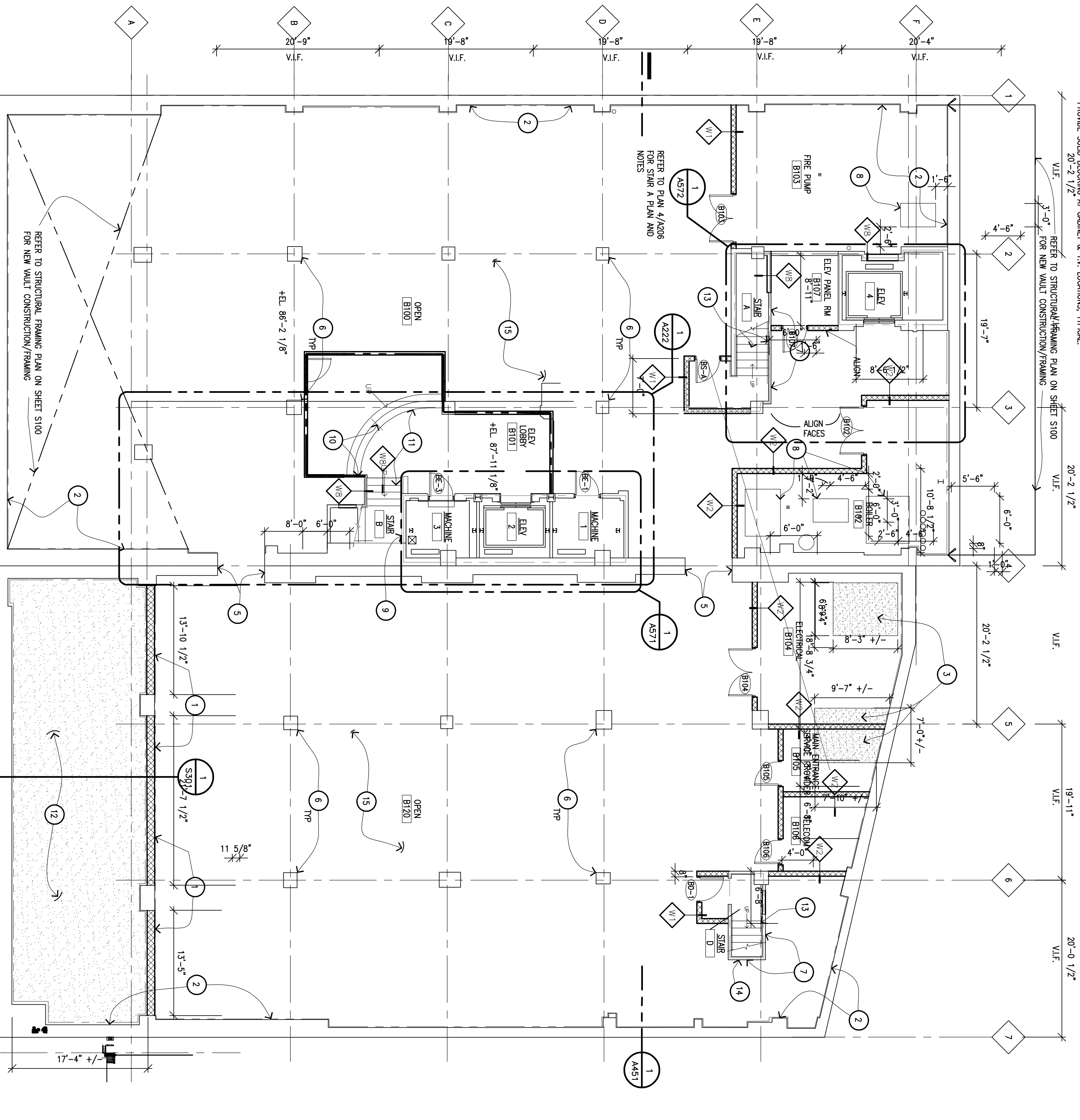
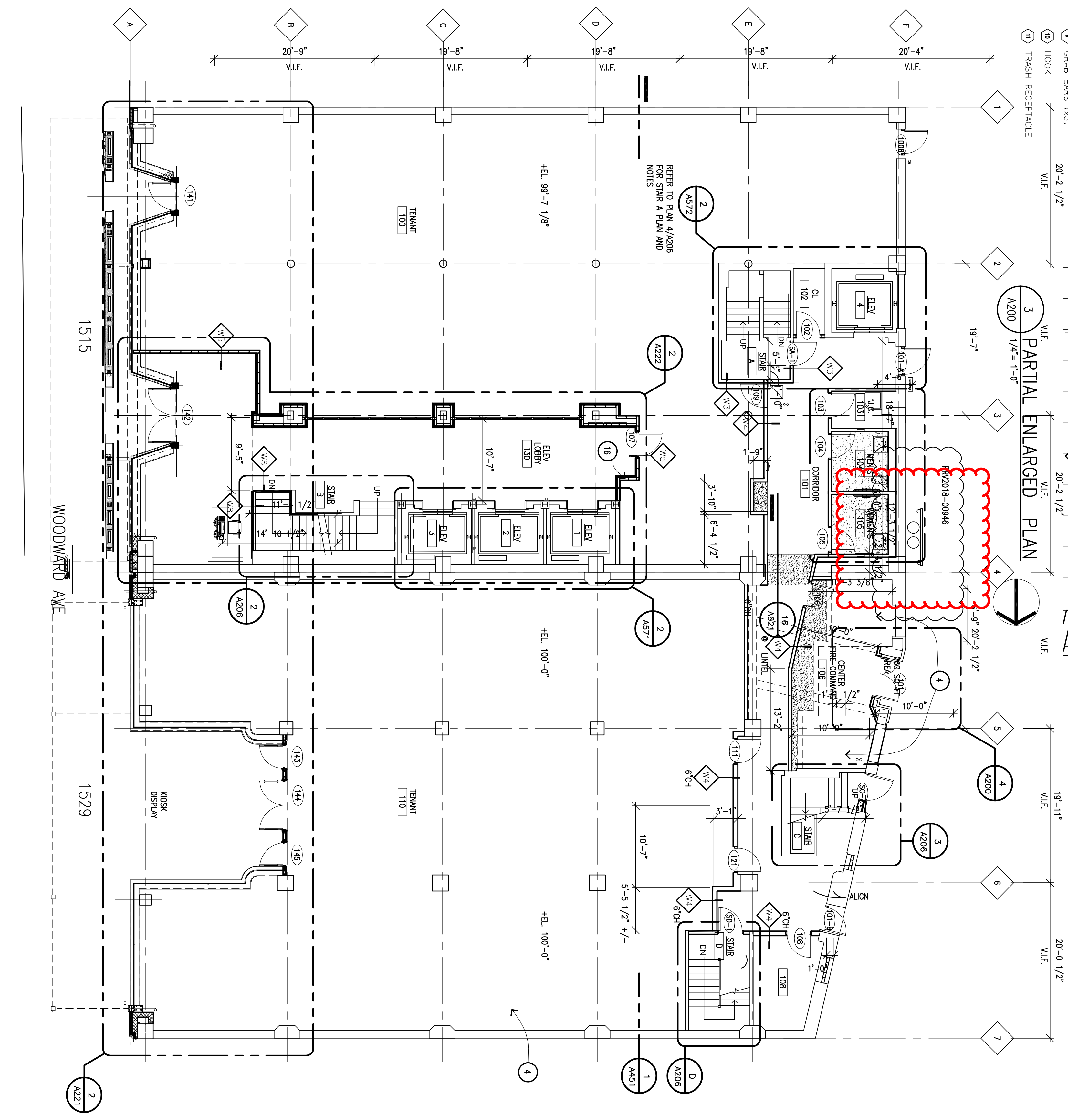
A200 1/4"=1'-0"

PARTIAL ENLARGED PLAN

A200 1/4"=1'-0"

PARTIAL ENLARGED PLAN

A200 1/4"=1'-0"



2 GROUND FLOOR PLAN
A200 1/8"=1'-0"

1 BASEMENT FLOOR PLAN
A200 1/8"=1'-0"

Scale: AS NOTED
Sheet Number: A200

2018.08.02
PRV COMMENTS
07.23.18 Bulletin 13
11.30.17 Bulletin 7
11.01.17 Bulletin 5R
07.27.17 Bulletin 5
05.10.17 Bulletin 2
03.20.17
PRV COMMENTS
12.23.16 - Bids/Permits
11.28.16 - HDC
11.18.16;
ELEVATOR BID PACK

BASEMENT & FIRST FLOOR PLAN

Scale: AS NOTED
Sheet Number: A200

2018.08.02
PRV COMMENTS
07.23.18 Bulletin 13
11.30.17 Bulletin 7
11.01.17 Bulletin 5R
07.27.17 Bulletin 5
05.10.17 Bulletin 2
03.20.17
PRV COMMENTS
12.23.16 - Bids/Permits
11.28.16 - HDC
11.18.16;
ELEVATOR BID PACK

BASEMENT & FIRST FLOOR PLAN

Scale: AS NOTED
Sheet Number: A200

2018.08.02
PRV COMMENTS
07.23.18 Bulletin 13
11.30.17 Bulletin 7
11.01.17 Bulletin 5R
07.27.17 Bulletin 5
05.10.17 Bulletin 2
03.20.17
PRV COMMENTS
12.23.16 - Bids/Permits
11.28.16 - HDC
11.18.16;
ELEVATOR BID PACK

BASEMENT & FIRST FLOOR PLAN

Scale: AS NOTED
Sheet Number: A200

2018.08.02
PRV COMMENTS
07.23.18 Bulletin 13
11.30.17 Bulletin 7
11.01.17 Bulletin 5R
07.27.17 Bulletin 5
05.10.17 Bulletin 2
03.20.17
PRV COMMENTS
12.23.16 - Bids/Permits
11.28.16 - HDC
11.18.16;
ELEVATOR BID PACK

BASEMENT & FIRST FLOOR PLAN

Scale: AS NOTED
Sheet Number: A200

2018.08.02
PRV COMMENTS
07.23.18 Bulletin 13
11.30.17 Bulletin 7
11.01.17 Bulletin 5R
07.27.17 Bulletin 5
05.10.17 Bulletin 2
03.20.17
PRV COMMENTS
12.23.16 - Bids/Permits
11.28.16 - HDC
11.18.16;
ELEVATOR BID PACK

BASEMENT & FIRST FLOOR PLAN

Scale: AS NOTED
Sheet Number: A200

2018.08.02
PRV COMMENTS
07.23.18 Bulletin 13
11.30.17 Bulletin 7
11.01.17 Bulletin 5R
07.27.17 Bulletin 5
05.10.17 Bulletin 2
03.20.17
PRV COMMENTS
12.23.16 - Bids/Permits
11.28.16 - HDC
11.18.16;
ELEVATOR BID PACK

BASEMENT & FIRST FLOOR PLAN

Scale: AS NOTED
Sheet Number: A200

2018.08.02
PRV COMMENTS
07.23.18 Bulletin 13
11.30.17 Bulletin 7
11.01.17 Bulletin 5R
07.27.17 Bulletin 5
05.10.17 Bulletin 2
03.20.17
PRV COMMENTS
12.23.16 - Bids/Permits
11.28.16 - HDC
11.18.16;
ELEVATOR BID PACK

BASEMENT & FIRST FLOOR PLAN

Scale: AS NOTED
Sheet Number: A200

2018.08.02
PRV COMMENTS
07.23.18 Bulletin 13
11.30.17 Bulletin 7
11.01.17 Bulletin 5R
07.27.17 Bulletin 5
05.10.17 Bulletin 2
03.20.17
PRV COMMENTS
12.23.16 - Bids/Permits
11.28.16 - HDC
11.18.16;
ELEVATOR BID PACK

BASEMENT & FIRST FLOOR PLAN

Scale: AS NOTED
Sheet Number: A200

2018.08.02
PRV COMMENTS
07.23.18 Bulletin 13
11.30.17 Bulletin 7
11.01.17 Bulletin 5R
07.27.17 Bulletin 5
05.10.17 Bulletin 2
03.20.17
PRV COMMENTS
12.23.16 - Bids/Permits
11.28.16 - HDC
11.18.16;
ELEVATOR BID PACK

BASEMENT & FIRST FLOOR PLAN

Scale: AS NOTED
Sheet Number: A200

2018.08.02
PRV COMMENTS
07.23.18 Bulletin 13
11.30.17 Bulletin 7
11.01.17 Bulletin 5R
07.27.17 Bulletin 5
05.10.17 Bulletin 2
03.20.17
PRV COMMENTS
12.23.16 - Bids/Permits
11.28.16 - HDC
11.18.16;
ELEVATOR BID PACK

BASEMENT & FIRST FLOOR PLAN

Scale: AS NOTED
Sheet Number: A200

2018.08.02
PRV COMMENTS
07.23.18 Bulletin 13
11.30.17 Bulletin 7
11.01.17 Bulletin 5R
07.27.17 Bulletin 5
05.10.17 Bulletin 2
03.20.17
PRV COMMENTS
12.23.16 - Bids/Permits
11.28.16 - HDC
11.18.16;
ELEVATOR BID PACK

BASEMENT & FIRST FLOOR PLAN

Scale: AS NOTED
Sheet Number: A200

2018.08.02
PRV COMMENTS
07.23.18 Bulletin 13
11.30.17 Bulletin 7
11.01.17 Bulletin 5R
07.27.17 Bulletin 5
05.10.17 Bulletin 2
03.20.17
PRV COMMENTS
12.23.16 - Bids/Permits
11.28.16 - HDC
11.18.16;
ELEVATOR BID PACK

BASEMENT & FIRST FLOOR PLAN

Scale: AS NOTED
Sheet Number: A200

2018.08.02
PRV COMMENTS
07.23.18 Bulletin 13
11.30.17 Bulletin 7
11.01.17 Bulletin 5R
07.27.17 Bulletin 5
05.10.17 Bulletin 2
03.20.17
PRV COMMENTS
12.23.16 - Bids/Permits
11.28.16 - HDC
11.18.16;
ELEVATOR BID PACK

BASEMENT & FIRST FLOOR PLAN

Scale: AS NOTED
Sheet Number: A200

2018.08.02
PRV COMMENTS
07.23.18 Bulletin 13
11.30.17 Bulletin 7
11.01.17 Bulletin 5R
07.27.17 Bulletin 5
05.10.17 Bulletin 2
03.20.17
PRV COMMENTS
12.23.16 - Bids/Permits
11.28.16 - HDC
11.18.16;
ELEVATOR BID PACK

BASEMENT & FIRST FLOOR PLAN

Scale: AS NOTED
Sheet Number: A200

2018.08.02
PRV COMMENTS
07.23.18 Bulletin 13
11.30.17 Bulletin 7
11.01.17 Bulletin 5R
07.27.17 Bulletin 5
05.10.17 Bulletin 2
03.20.17
PRV COMMENTS
12.23.16 - Bids/Permits
11.28.16 - HDC
11.18.16;
ELEVATOR BID PACK

BASEMENT & FIRST FLOOR PLAN

Scale: AS NOTED
Sheet Number: A200

2018.08.02
PRV COMMENTS
07.23.18 Bulletin 13
11.30.17 Bulletin 7
11.01.17 Bulletin 5R
07.27.17 Bulletin 5
05.10.17 Bulletin 2
03.20.17
PRV COMMENTS
12.23.16 - Bids/Permits
11.28.16 - HDC
11.18.16;
ELEVATOR BID PACK

BASEMENT & FIRST FLOOR PLAN

Scale: AS NOTED
Sheet Number: A200

2018.08.02
PRV COMMENTS
07.23.18 Bulletin 13
11.30.17 Bulletin 7
11.01.17 Bulletin 5R
07.27.17 Bulletin 5
05.10.17 Bulletin 2
03.20.17
PRV COMMENTS
12.23.16 - Bids/Permits
11.28.16 - HDC
11.18.16;
ELEVATOR BID PACK

BASEMENT & FIRST FLOOR PLAN

Scale: AS NOTED
Sheet Number: A200

2018.08.02
PRV COMMENTS
07.23.18 Bulletin 13
11.30.17 Bulletin 7
11.01.17 Bulletin 5R
07.27.17 Bulletin 5
05.10.17 Bulletin 2
03.20.17
PRV COMMENTS
12.23.16 - Bids/Permits
11.28.16 - HDC
11.18.16;
ELEVATOR BID PACK

BASEMENT & FIRST FLOOR PLAN

Scale: AS NOTED
Sheet Number: A200

2018.08.02
PRV COMMENTS
07.23.18 Bulletin 13
11.30.17 Bulletin 7
11.01.17 Bulletin 5R
07.27.17 Bulletin 5
05.10.17 Bulletin 2
03.20.17
PRV COMMENTS
12.23.16 - Bids/Permits
11.28.16 - HDC
11.18.16;
ELEVATOR BID PACK

BASEMENT & FIRST FLOOR PLAN

Scale: AS NOTED
Sheet Number: A200

2018.08.02
PRV COMMENTS
07.23.18 Bulletin 13
11.30.17 Bulletin 7
11.01.17 Bulletin 5R
07.27.17 Bulletin 5
05.10.17 Bulletin 2
03.20.17
PRV COMMENTS
12.23.16 - Bids/Permits
11.28.16 - HDC
11.18.16;
ELEVATOR BID PACK

BASEMENT & FIRST FLOOR PLAN

Scale: AS NOTED
Sheet Number: A200

2018.08.02
PRV COMMENTS
07.23.18 Bulletin 13
11.30.17 Bulletin 7
11.01.17 Bulletin 5R
07.27.17 Bulletin 5
05.10.17 Bulletin 2
03.20.17
PRV COMMENTS
12.23.16 - Bids/Permits
11.28.16 - HDC
11.18.16;
ELEVATOR BID PACK

BASEMENT & FIRST FLOOR PLAN

Scale: AS NOTED
Sheet Number: A200

2018.08.02
PRV COMMENTS
07.23.18 Bulletin 13
11.30.17 Bulletin 7
11.01.17 Bulletin 5R
07.27.17 Bulletin 5
05.10.17 Bulletin 2
03.20.17
PRV COMMENTS
12.23.16 - Bids/Permits
11.28.16 - HDC
11.18.16;
ELEVATOR BID PACK

BASEMENT & FIRST FLOOR PLAN

Scale: AS NOTED
Sheet Number: A200

2018.08.02
PRV COMMENTS
07.23.18 Bulletin 13
11.30.17 Bulletin 7
11.01.17 Bulletin 5R
07.27.17 Bulletin 5
05.10.17 Bulletin 2
03.20.17
PRV COMMENTS
12.23.16 - Bids/Permits
11.28.16 - HDC
11.18.16;
ELEVATOR BID PACK

BASEMENT & FIRST FLOOR PLAN

Scale: AS NOTED
Sheet Number: A200

2018.08.02
PRV COMMENTS
07.23.18 Bulletin 13
11.30.17 Bulletin 7
11.01.17 Bulletin 5R
07.27.17 Bulletin 5
05.10.17 Bulletin 2
03.20.17
PRV COMMENTS
12.23.16 - Bids/Permits
11.28.16 - HDC
11.18.16;
ELEVATOR BID PACK

BASEMENT & FIRST FLOOR PLAN

Scale: AS NOTED
Sheet Number: A200

2018.08.02
PRV COMMENTS
07.23.18 Bulletin 13
11.30.17 Bulletin 7
11.01.17 Bulletin 5R
07.27.17 Bulletin 5
05.10.17 Bulletin 2
03.20.17
PRV COMMENTS
12.23.16 - Bids/Permits
11.28.16 - HDC
11.18.16;
ELEVATOR BID PACK

BASEMENT & FIRST FLOOR PLAN

Scale: AS NOTED
Sheet Number: A200

2018.08.02
PRV COMMENTS
07.23.18 Bulletin 13
11.30.17 Bulletin 7
11.01.17 Bulletin 5R
07.27.17 Bulletin 5
05.10.17 Bulletin 2
03.20.17
PRV COMMENTS
12.23.16 - Bids/Permits
11.28.16 - HDC
11.18.16;
ELEVATOR BID PACK

BASEMENT & FIRST FLOOR PLAN

Scale: AS NOTED
Sheet Number: A200

2018.08.02
PRV COMMENTS
07.23.18 Bulletin 13
11.30.17 Bulletin 7
11.01.17 Bulletin 5R
07.27.17 Bulletin 5
05.10.17 Bulletin 2
03.20.17
PRV COMMENTS
12.23.16 - Bids/Permits
11.28.16 - HDC
11.18.16;
ELEVATOR BID PACK

BASEMENT & FIRST FLOOR PLAN

Scale: AS NOTED
Sheet Number: A200

2018.08.02
PRV COMMENTS
07.23.18 Bulletin 13
11.30.17 Bulletin 7
11.01.17 Bulletin 5R
07.27.17 Bulletin 5
05.10.17 Bulletin 2
03.20.17
PRV COMMENTS
12.23.16 - Bids/Permits
11.28.16 - HDC
11.18.16;
ELEVATOR BID PACK

BASEMENT & FIRST FLOOR PLAN

Scale: AS NOTED
Sheet Number: A200

2018.08.02
PRV COMMENTS
07.23.18 Bulletin 13
11.30.17 Bulletin 7
11.01.17 Bulletin 5R
07.27.17 Bulletin 5
05.10.17 Bulletin 2
03.20.17
PRV COMMENTS
12.23.16 - Bids/Permits
11.28.16 - HDC
11.18.16;
ELEVATOR BID PACK

BASEMENT & FIRST FLOOR PLAN

Scale: AS NOTED
Sheet Number: A200

2018.08.02
PRV COMMENTS
07.23.18 Bulletin 13
11.30.17 Bulletin 7
11.01.17 Bulletin 5R
07.27.17 Bulletin 5
05.10.17 Bulletin 2
03.20.17
PRV COMMENTS
12.23.16 - Bids/Permits
11.28.16 - HDC
11.18.16;
ELEVATOR BID PACK

BASEMENT & FIRST FLOOR PLAN

Scale: AS NOTED
Sheet Number: A200