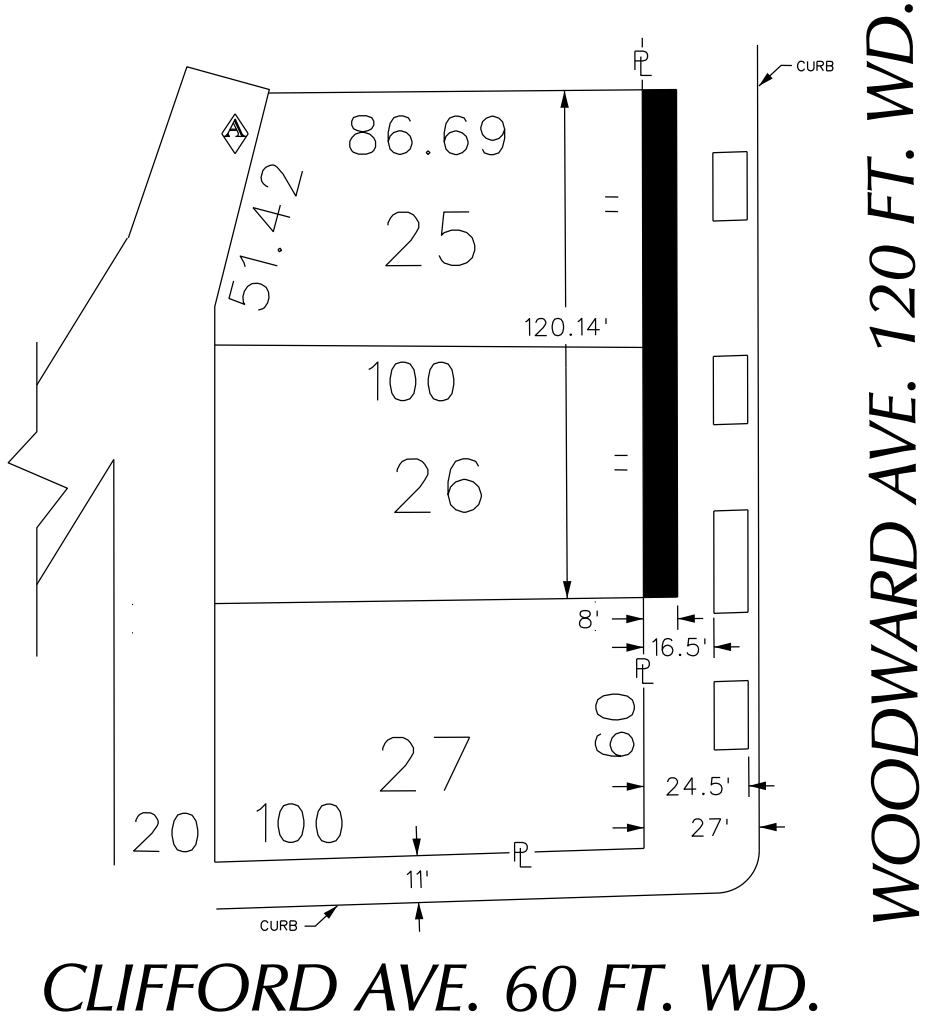
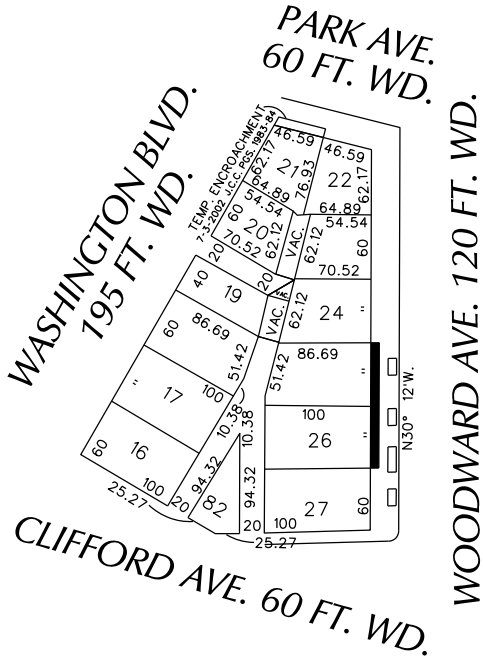


PETITION NO. 1358  
 GIFFELS WEBSTER  
 28 W. ADAMS, SUITE 1200  
 DETROIT, MICHIGAN 48226  
 C/O DEIRDRE CLEIN  
 PHONE NO. 313 962-4442



**"REVISED"**



**■** - REQUEST ENCROACHMENT  
 (With Seasonal Outdoor Seating  
 and Canopies)

(FOR OFFICE USE ONLY)

CARTO 28 B

<b>B</b>					
<b>A</b>	REMOVING REQUEST ENCROACHMENT (With Canopies)	WLW	KSM	KSM	10/25/18
<b>DESCRIPTION</b>		<b>DRWN</b>	<b>CHKD</b>	<b>APPD</b>	<b>DATE</b>
<b>REVISIONS</b>					
<b>DRAWN BY</b>	WLW	<b>CHECKED</b>		KSM	
<b>DATE</b>	01-25-17	<b>APPROVED</b>			

**REQUEST ENCROACHMENT  
 INTO WOODWARD**  
 AT 1515 - 1525 WOODWARD AVE.  
 (With Seasonal Outdoor Seating  
 and Canopies)

<b>CITY OF DETROIT    CITY ENGINEERING DEPARTMENT    SURVEY BUREAU</b>	
<b>JOB NO.</b>	01-01
<b>DRWG. NO.</b>	X 1358