


TO: City Engineering Division, DPW
2 Woodward Ave., Suite 642
Detroit, MI 48226-3462
Survey Bureau: 313-224-3970

Ref. No. 201612007
Petition No. 1313REV

The proposed change in property (referred to above) would affect our services as follows:

- () Not Involved.
- () Involved; but asking you to hold action on this petition until further notice.
- () Involved; the nature of our services, and the estimated costs of removing and/or rerouting such services are:
- (X) Involved; have no objection to the requested encroachment into W. Grand Blvd. and Third Ave. at 2921 W. Grand Blvd. (with planters and sub-surface frost slabs) as shown on drawing no. x1313 dated 12/09/2016 and revised on 2/15/2017, provided that a minimum clear sidewalk width of 6 ft. shall be maintained adjacent to the proposed planters for use by pedestrians at all times.

Traffic Engineering Division - DPW
(Utility or City Department)

for Ashok Patel 
By

City Traffic Engineer
Title

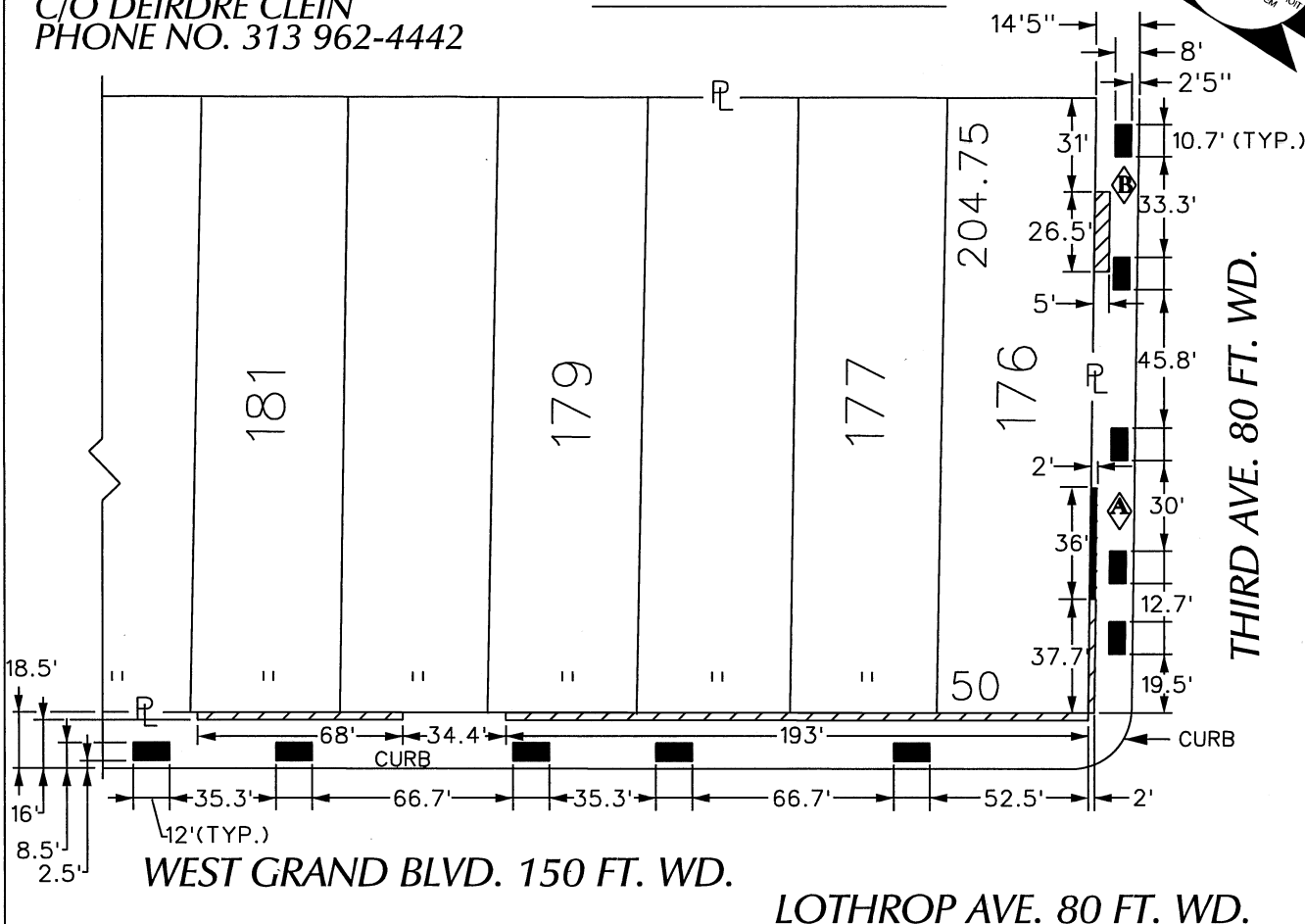
March 21, 2017
Date

313 224-1610
Area code-Telephone number

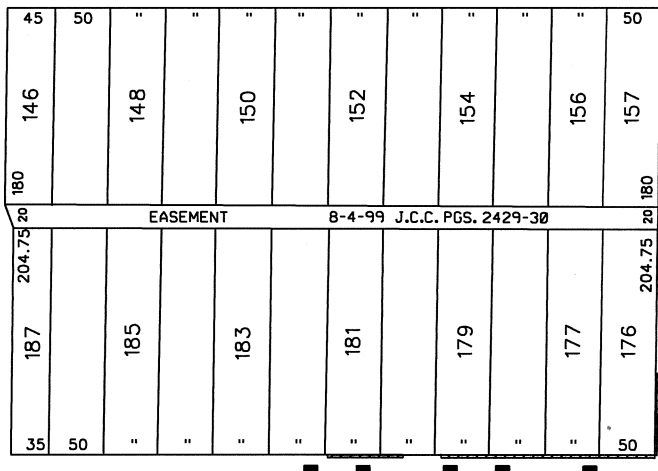
MA/ma

PETITION NO. 1313
 GIFFELS WEBSTER
 28 ADAMS, SUITE 1200
 DETROIT, MICHIGAN 48226
 C/O DEIRDRE CLEIN
 PHONE NO. 313 962-4442

"REVISED"



JOHN C. LODGE FWY.



- REQUEST ENCROACHMENT
 (With Sub-Surface Frost Slabs)



- REQUEST ENCROACHMENT
 (With Planters)

(FOR OFFICE USE ONLY)

WEST GRAND BLVD. 150 FT. WD.

CARTO 31 B

B	SUB-SURFACE FROST SLAB ONLY	WLW	KSM	KSM	02/02/17
A	PLANTER SIZE INCREASED FROM 4' X 16' TO 2' X 36'	WLW	KSM	KSM	02/15/17
REVISIONS					
DESCRIPTION	DRWN	CHKD	APPD	DATE	
DRAWN BY	WLW	CHECKED			
DATE	12-09-16	APPROVED			

**REQUEST ENCROACHMENT
 INTO W. GRAND BLVD. AND THIRD AVE.
 AT 2921 W. GRAND BLVD.
 (With Planters and Sub-Surface Frost Slabs)**

**CITY OF DETROIT
 CITY ENGINEERING DEPARTMENT
 SURVEY BUREAU**

JOB NO. 01-01

DRWG. NO. X 1313