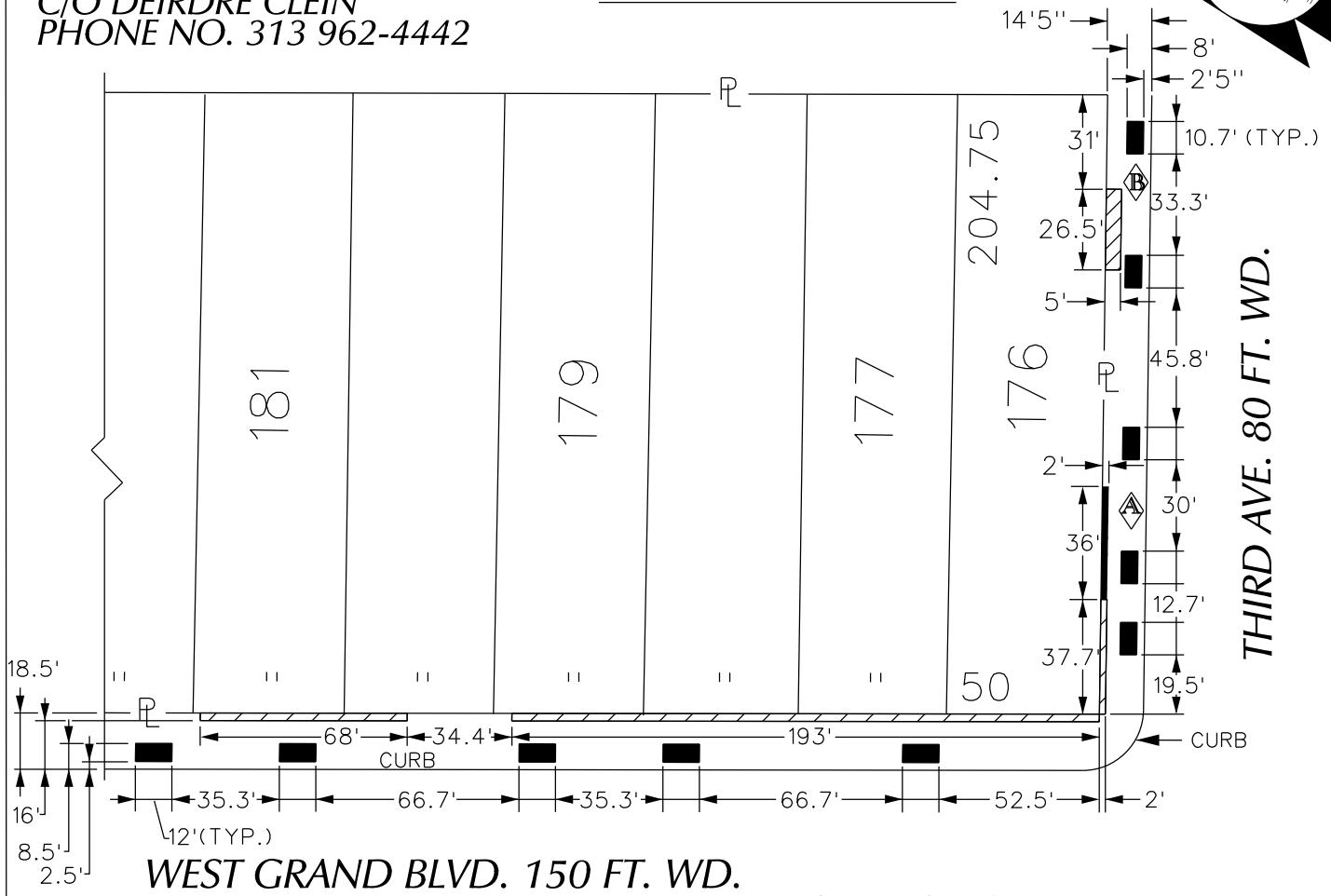
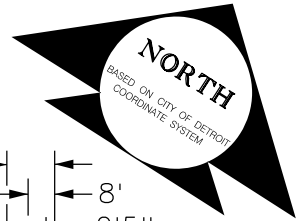


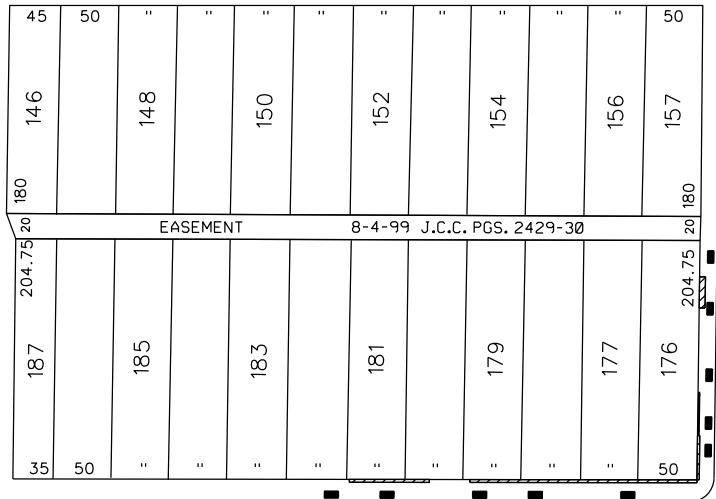
PETITION NO. 1313
 GIFFELS WEBSTER
 28 ADAMS, SUITE 1200
 DETROIT, MICHIGAN 48226
 C/O DEIRDRE CLEIN
 PHONE NO. 313 962-4442

"REVISED"



LOTHROP AVE. 80 FT. WD.

JOHN C. LODGE FWY.

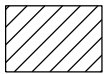


THIRD AVE. 80 FT. WD.

WEST GRAND BLVD. 150 FT. WD.

CARTO 31 B

(FOR OFFICE USE ONLY)



- REQUEST ENCROACHMENT
 (With Sub-Surface Frost Slabs)



- REQUEST ENCROACHMENT
 (With Planters)

B	SUB-SURFACE FROST SLAB ONLY	WLW	KSM	KSM	02/02/17
A	PLANTER SIZE INCREASED FROM 4' X 16' TO 2' X 36'	WLW	KSM	KSM	02/15/17
DESCRIPTION		DRWN	CHKD	APPD	DATE
REVISIONS					
DRAWN BY	WLW	CHECKED			
DATE	12-09-16	APPROVED			

**REQUEST ENCROACHMENT
 INTO W. GRAND BLVD. AND THIRD AVE.
 AT 2921 W. GRAND BLVD.
 (With Planters and Sub-Surface Frost Slabs)**

**CITY OF DETROIT
 CITY ENGINEERING DEPARTMENT
 SURVEY BUREAU**

JOB NO. 01-01

DRWG. NO. X 1313