

City of Detroit

OFFICE OF THE CITY CLERK

Janice M. Winfrey
City Clerk

Vivian A. Hudson
Deputy City Clerk

DEPARTMENTAL REFERENCE COMMUNICATION

Monday, October 24, 2016

To: *The Department or Commission Listed Below*

From: *Janice M. Winfrey, Detroit City Clerk*

The following petition is herewith referred to you for report and recommendation to the City Council.

In accordance with that body's directive, kindly return the same with your report in duplicate within four (4) weeks.

DPW - CITY ENGINEERING DIVISION

1313 *Giffels Webster, request for encroachment into W. Grand Boulevard and Third Avenue right-of-ways with the installation of landscaping planters, lighting, and irrigation, decorative pavement, and sub-surface frost slabs.*



#1313

20170409 09:03 AM DETROIT MI 48226

October 19, 2016

HAND DELIVER

Honorable Detroit City Council
C/o Detroit City Clerk
Coleman A. Young Municipal Center
2 Woodward Avenue, Suite 200
Detroit, Michigan 48226

RE: Giffels Webster - Request for encroachment into W. Grand Boulevard and Third Avenue.

Giffels Webster, 28 W. Adams, Suite 1200, Detroit, Michigan 48226, on behalf of The Platform, 3011 W. Grand Boulevard, Suite 215, Detroit, MI 48202, respectfully requests to encroach into the W. Grand Boulevard and Third Avenue right-of-ways with the installation of landscaping planters, lighting, and irrigation, decorative pavement, and sub-surface frost slabs.

We are requesting the following encroachments:

- Five encroachments into the W Grand Boulevard right-of-way for planters, each of which shall be 12 feet in length, 6 feet in width, beginning at grade and extending 2 feet in height;
- Two sub-surface encroachments into the W Grand Boulevard right-of-way for entryway frost slabs. Entryway frost slabs shall be located at exterior doorways to reduce sidewalk heave and shall be contained within a zone 2.5 feet in width with lengths of 68 feet and 193 feet, beginning at grade and extending approximately 3.5 feet below in depth;
- Five encroachments into the Third Avenue right-of-way for planters, each of which shall be 10.7 feet in length, 5.5 feet in width, beginning at grade and extending 4 inches in height;
- A 4 foot wide by 16 foot long encroachment into the Third Avenue right-of-way for a planter, beginning at grade and extending 3 feet in height;
- Three sub-surface encroachments into the Third Avenue right-of-way for entryway frost slabs, with dimensions of 5 feet in width by 26.5 feet in length, 4 feet in width by 16 feet in length, 2 feet in width by 37.7 feet in length, beginning at grade and extending approximately 3.5 feet below in depth.

These encroachments will neither impede pedestrian nor vehicular traffic, nor will they interfere with the maintenance of the public rights-of-way, including utility company and Fire Department access. The requested encroachment maintains, at minimum, a 6.5 foot wide access way within the sidewalk for pedestrian use.

In addition to these encroachments, we are requesting the establishment of a maintenance and indemnification agreement for the proposed decorative pavement within the walks along both W Grand Boulevard and Third Avenue.

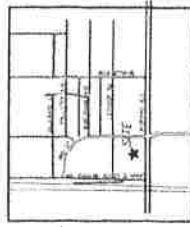
Drawings of both the proposed location of encroachments and the pavement plan are attached herein.

If you should have any questions, please do not hesitate to contact me by phone, at 313.962.4442 or by email, at dclein@giffelswebster.com.

Respectfully,

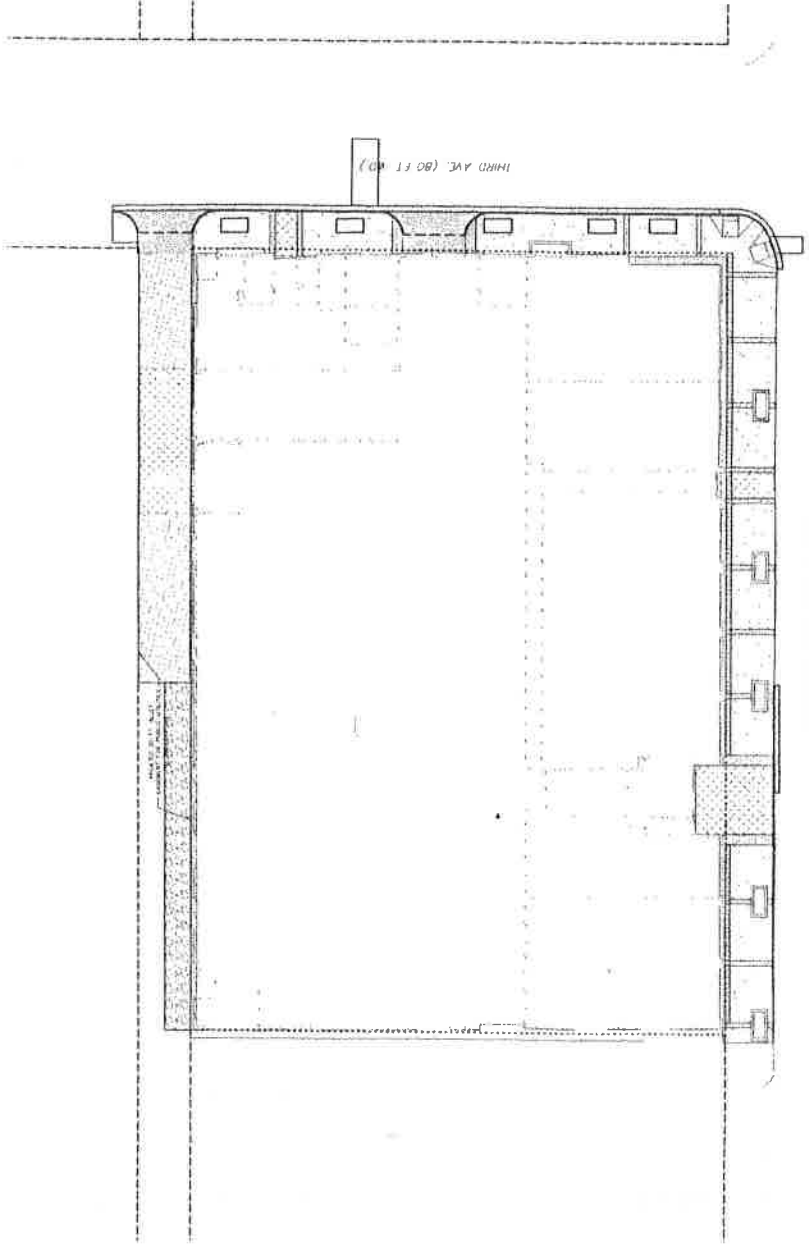
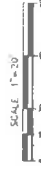
A handwritten signature in cursive script that reads "Deirdre Clein".

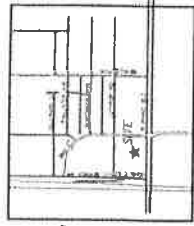
Deirdre Clein, Planner
Giffels Webster



PAVING AND GRADING HATCH LEGEND

	CONCRETE
	ASPHALT
	GRAVEL
	SAND
	STONE
	BRICK
	COBBLESTONE
	GRANITE
	LIMESTONE
	MARBLE
	TRAVERTINE
	SLATE
	TILE
	WOOD
	GRASS
	LAWN
	GARDEN
	LANDSCAPE
	SITE



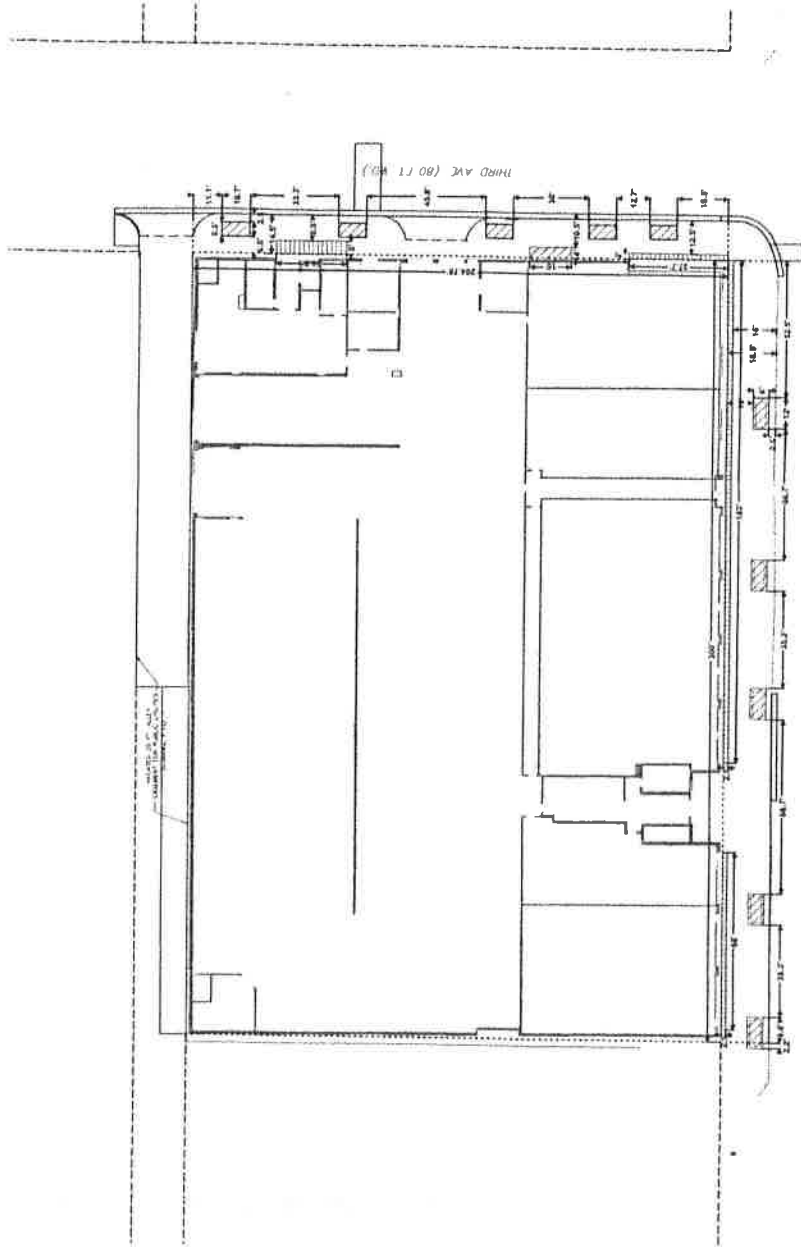


LEGEND



PROPOSED IMPROVEMENT FOR PAVING

PROPOSED CURB, SURFACE IMPROVEMENT FOR FRONT BULK



giffels
webster

DATE: 08/22/04

