

TO: City Engineering Division, DPW  
2 Woodward Ave., Suite 642  
Detroit, Michigan 48226-3462  
Survey Bureau: 313-224-3970

Petition: x1303

The proposed change in property (referred to on the other side of this sheet) would affect our services as follows:

- Not Involved
- Involved; but asking you to hold action on this petition until further notice.
- Involved; but no objections to the property change.
- Involved; objection to the property change.
- Involved; but no objections to the property change...provided as easement of the full width of the public right-of-way (street, alley or other public place) is reserved.
- Involved; the nature of our services and the estimated costs of removing and/or rerouting such services are:

*ESTIMATED COST: \$24,173.31*

*DTE ENERGY*

(Utility or City Department)

*Desmond C. Jones*

By

*SENIOR ENGINEER*

Title

*5/05/2017*

Date

*313-235-7885*

Area code – Telephone number

**From:** Kiehler, Matt [<mailto:matt.kiehler@amecfw.com>]  
**Sent:** Monday, May 01, 2017 2:01 PM  
**To:** Desmond Jones  
**Subject:** Springwell Ct Utilities

Desmond – Thanks for taking the time to meet with me and walk our site on Springwell Court last week. I wanted to follow up and make sure we get the ball rolling on the proposed utility changes. Attached is a marked up drawing with the existing utilities. The first drawing shows utilities including DTE on Springwell Ct. It shows which poles will be removed. The second one shows the proposed below ground reroute of AT&T. What do you need from us in order put together a proposal for the modification of existing utilities?

Terminate at Existing Pole

L139AFN389

Remove Poles

L139AFN390

L139AFN391

L139AFN392

L139AFN393

L139AFN481

Thanks again for your time,

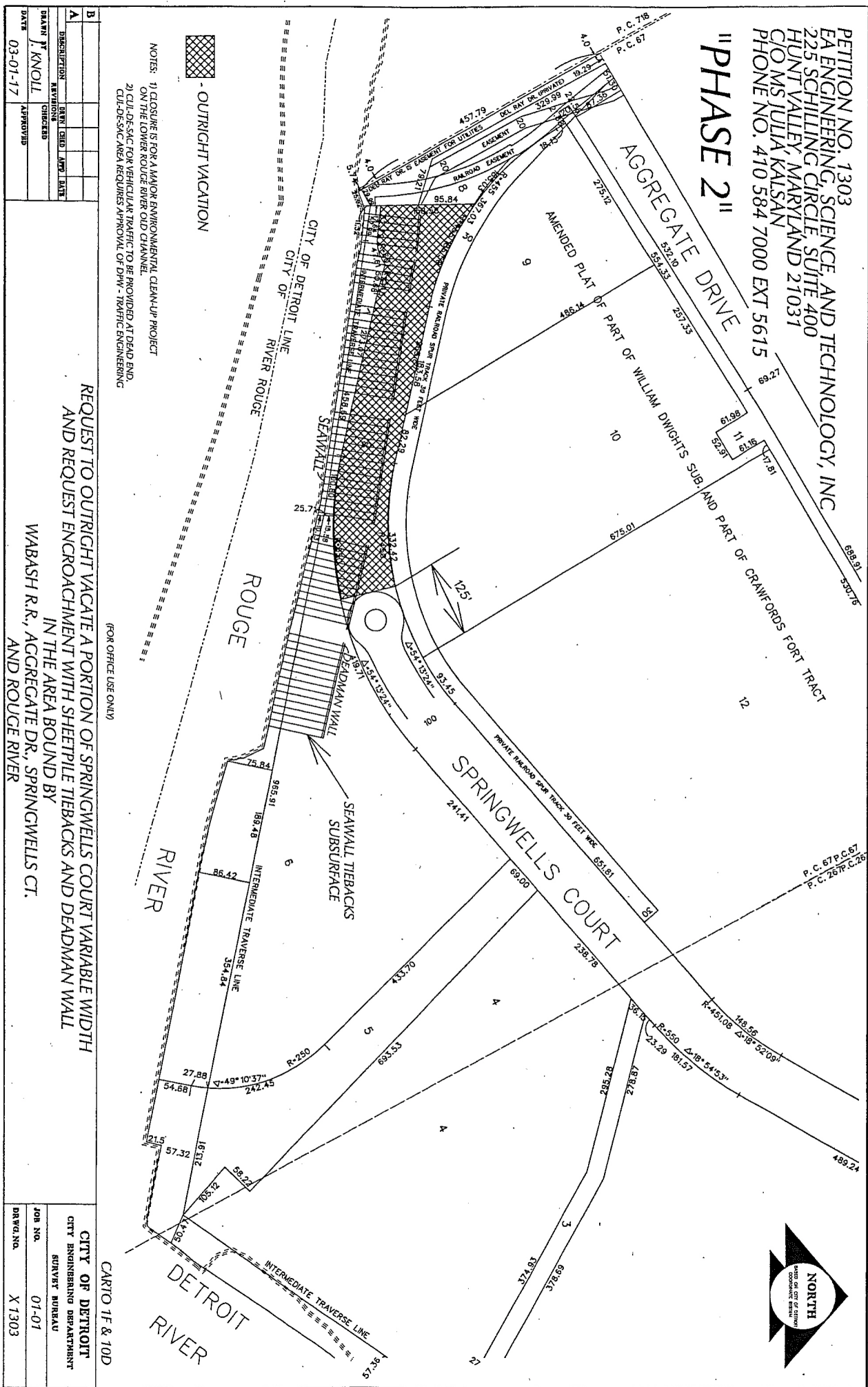
**Matthew Kiehler, EIT**

Environmental Engineer, Environment & Infrastructure, Amec Foster Wheeler  
46850 Magellan Drive, Suite 190, Novi, MI 48377, USA  
T +1 248 926 4008 D +1 248 313 3689 M +1 313 510 9909  
[matt.kiehler@amecfw.com](mailto:matt.kiehler@amecfw.com) [amecfw.com](http://amecfw.com)

<image001.png>

PETITION NO. 1303  
 EA ENGINEERING, SCIENCE, AND TECHNOLOGY, INC  
 2225 SCHILLING CIRCLE, SUITE 400  
 HUNT VALLEY, MARYLAND 21031  
 C/O MSJULLA KALSAN  
 PHONE NO. 410 584 7000 EXT 5615

# "PHASE 2"



NOTES:  
 1) CLOSURE FOR A MAJOR ENVIRONMENTAL CLEANUP PROJECT  
 ON THE LOWER ROUGE RIVER OLD CHANNEL  
 2) CLOSURE FOR VEHICULAR TRAFFIC TO BE PROVIDED AT DEAD END  
 CLOSURE-SCADA REQUIRES APPROVAL OF DMV - TRAFFIC ENGINEERING

B			
A	DESCRIPTION	DATE	BY
	DESIGNED	03-01-17	J. KNOIL
	CHECKED		
	APPROVED		

REQUEST TO OUTRIGHT VACATE A PORTION OF SPRINGWELLS COURT VARIABLE WIDTH  
 AND REQUEST ENCROACHMENT WITH SHEETPILE TIEBACKS AND DEADMAN WALL  
 IN THE AREA BOUND BY  
 WABASH R.R., AGGREGATE DR., SPRINGWELLS CT.  
 AND ROUGE RIVER

(FOR OFFICE USE ONLY)  
 CITY OF DETROIT  
 CITY ENGINEERING DEPARTMENT  
 SURVEY BUREAU  
 JOB NO. 01-01  
 DRAWING NO. X1303





# Existing Utilities (4/27/17)

- = DTE
- = AT+T
- = Unknown
- = Utility Pole

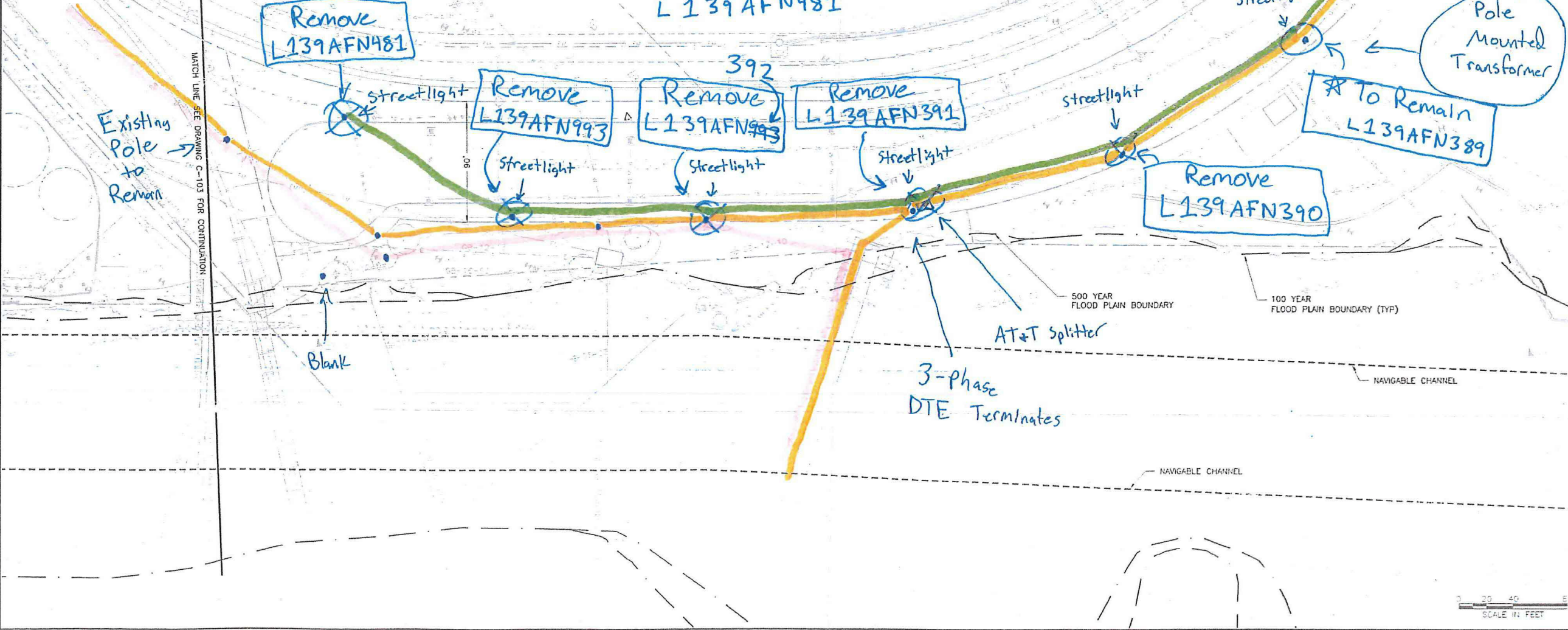
Keep Existing (Terminate AT) = L139AFN389

Remove = L139AFN390  
 L139AFN391  
 L139AFN392  
 L139AFN993  
 L139AFN481

Needed Drawing -  
 Drawing Received  
 on 05/01/2017  
 Desmond Jones - DTE

Incoming AT+T and Unknown

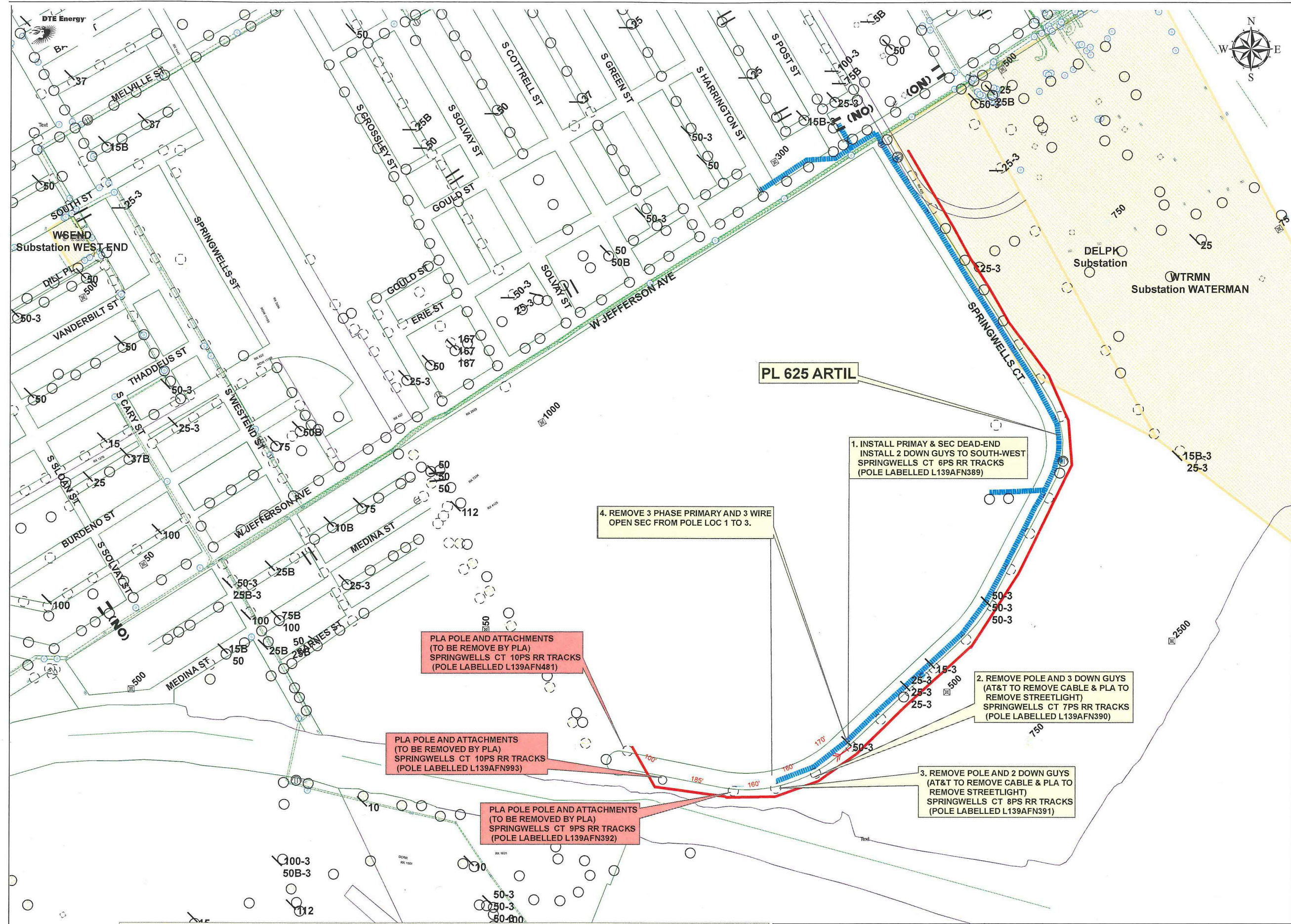
Incoming DTE



<b>Honeywell</b>	
100% DESIGN 100% DESIGN - FOR REVIEW 90% DESIGN - CLIENT REVIEW	ISSUED FOR BID 100% DESIGN 100% DESIGN - FOR REVIEW 90% DESIGN - CLIENT REVIEW
DESIGN N. LANGAIS CHECK J. MCKENZIE DR E. O. SHALLARD	DATE 07/17/10 NO. 1 REVISION
LOWER ROUGE RIVER OLD CHANNEL ROUGE RIVER AREA OF CONCERN PERMANENT SHEETPILE WALL INSTALLATION DETROIT, MICHIGAN HONEYWELL SITE ID - 30057	
CIVIL EXISTING CONDITIONS PLAN (COKE)	
amec foster wheeler Environmental & Infrastructure, Inc. 811 Congress Street, Suite 200 Detroit, MI 48226	
VERIFY SCALE 1" = 20'	
DATE JUNE 2016 PROJ 3253-15-1667 DWG C-102 SHEET 5 of 53	

Matthew Kiehler 4/27/17





PL 625 ARTIL

1. INSTALL PRIMAY & SEC DEAD-END  
INSTALL 2 DOWN GUYS TO SOUTH-WEST  
SPRINGWELLS CT 6PS RR TRACKS  
(POLE LABELLED L139AFN389)

4. REMOVE 3 PHASE PRIMARY AND 3 WIRE  
OPEN SEC FROM POLE LOC 1 TO 3.

PLA POLE AND ATTACHMENTS  
(TO BE REMOVE BY PLA)  
SPRINGWELLS CT 10PS RR TRACKS  
(POLE LABELLED L139AFN481)

2. REMOVE POLE AND 3 DOWN GUYS  
(AT&T TO REMOVE CABLE & PLA TO  
REMOVE STREETLIGHT)  
SPRINGWELLS CT 7PS RR TRACKS  
(POLE LABELLED L139AFN390)

PLA POLE AND ATTACHMENTS  
(TO BE REMOVED BY PLA)  
SPRINGWELLS CT 10PS RR TRACKS  
(POLE LABELLED L139AFN993)

3. REMOVE POLE AND 2 DOWN GUYS  
(AT&T TO REMOVE CABLE & PLA TO  
REMOVE STREETLIGHT)  
SPRINGWELLS CT 8PS RR TRACKS  
(POLE LABELLED L139AFN391)

PLA POLE AND ATTACHMENTS  
(TO BE REMOVED BY PLA)  
SPRINGWELLS CT 9PS RR TRACKS  
(POLE LABELLED L139AFN392)

Cost of Removal is \$24,173.31. The estimate includes the removal of DTE Energy equipment at the locations specified above. As discussed with the Environmental Engineer from Amec foster Wheeler (Matt Kiehler) only two (2) of the poles belong to DTE. The other poles and all the 5 streetlights belong to PLA. AT&T are also responsible for removing their attachment.

CITY OF DETROIT PETITION 1303  REASON FOR WORK: CITY OF DETROIT PETITION # 1303 POLE REMOVAL SPRINGWELL CT -	APPROVED	DTE ELECTRIC COMPANY REGIONAL PLANNING	
		LAYOUT BY D. C. Jones	DRAWN BY Desmond C. Jones
		DATE MAY 1 2017	DRAWING NUMBER A17-138
		SCALE NONE	