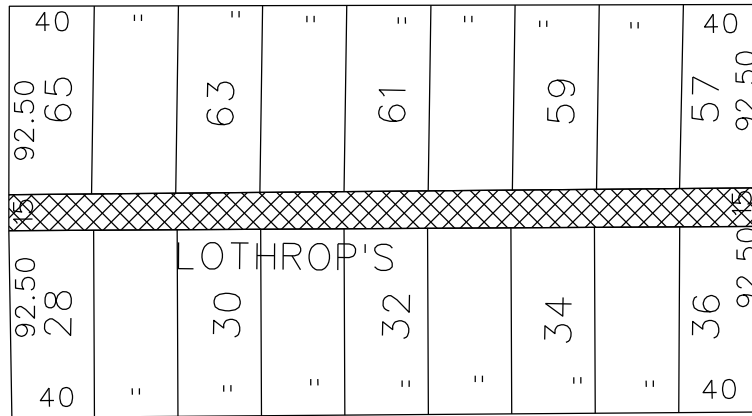


PETITION NO. 1293  
 GIFFELS WEBSTER  
 28 W. ADAMS, SUITE 1200  
 DETROIT, MICHIGAN 48226  
 C/O BRAIN ELLISON  
 PHONE NO. 313 397-5863

**"REVISED"**

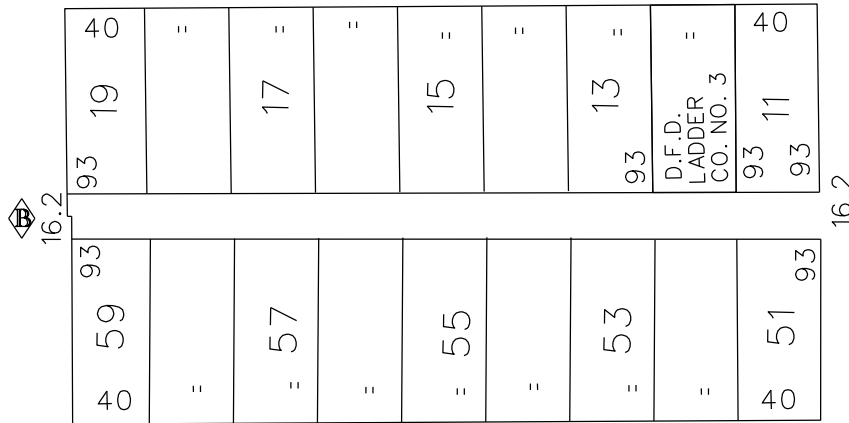


FISHER FREEWAY (I-75)  
**FISHER FWY. SERVICE DR.**



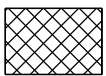
**CLIFFORD ST. 60 FT. WD.**

**MONTCALM ST. 50 FT. WD.**



**PARK AVE. 60 FT. WD.**

**COLUMBIA ST. 50 FT. WD.**



- CONVERSION TO EASEMENT  
 (Underground Only)

(FOR OFFICE USE ONLY)

CARTO 29 E

<b>B</b>	REMOVING THE SOUTHERN BLOCK FROM THIS PETITION	WLW	KSM	KSM	11/30/17
<b>A</b>	CHANGING TERMINOLOGY TO "CONVERSION TO EASEMENT (Underground Only)"	WLW	KSM	KSM	4/21/17
<b>DESCRIPTION</b>		<b>DRWN</b>	<b>CHKD</b>	<b>APPD</b>	<b>DATE</b>
<b>REVISIONS</b>					
<b>DRAWN BY</b>	WLW	<b>CHECKED</b>			
<b>DATE</b>	02-28-17	<b>APPROVED</b>			

CONVERSION TO EASEMENT  
 (Underground Only)  
 THE EAST/WEST PUBLIC ALLEY 15 FT. WD.  
 IN THE AREA BOUND BY  
 CLIFFORD, MONTCALM, COLUMBIA ST., PARK AVE.  
 AND FISHER FWY. SERVICE DR.

**CITY OF DETROIT**  
**CITY ENGINEERING DEPARTMENT**  
**SURVEY BUREAU**

**JOB NO.** 01-01  
**DRWG. NO.** X 1293