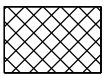
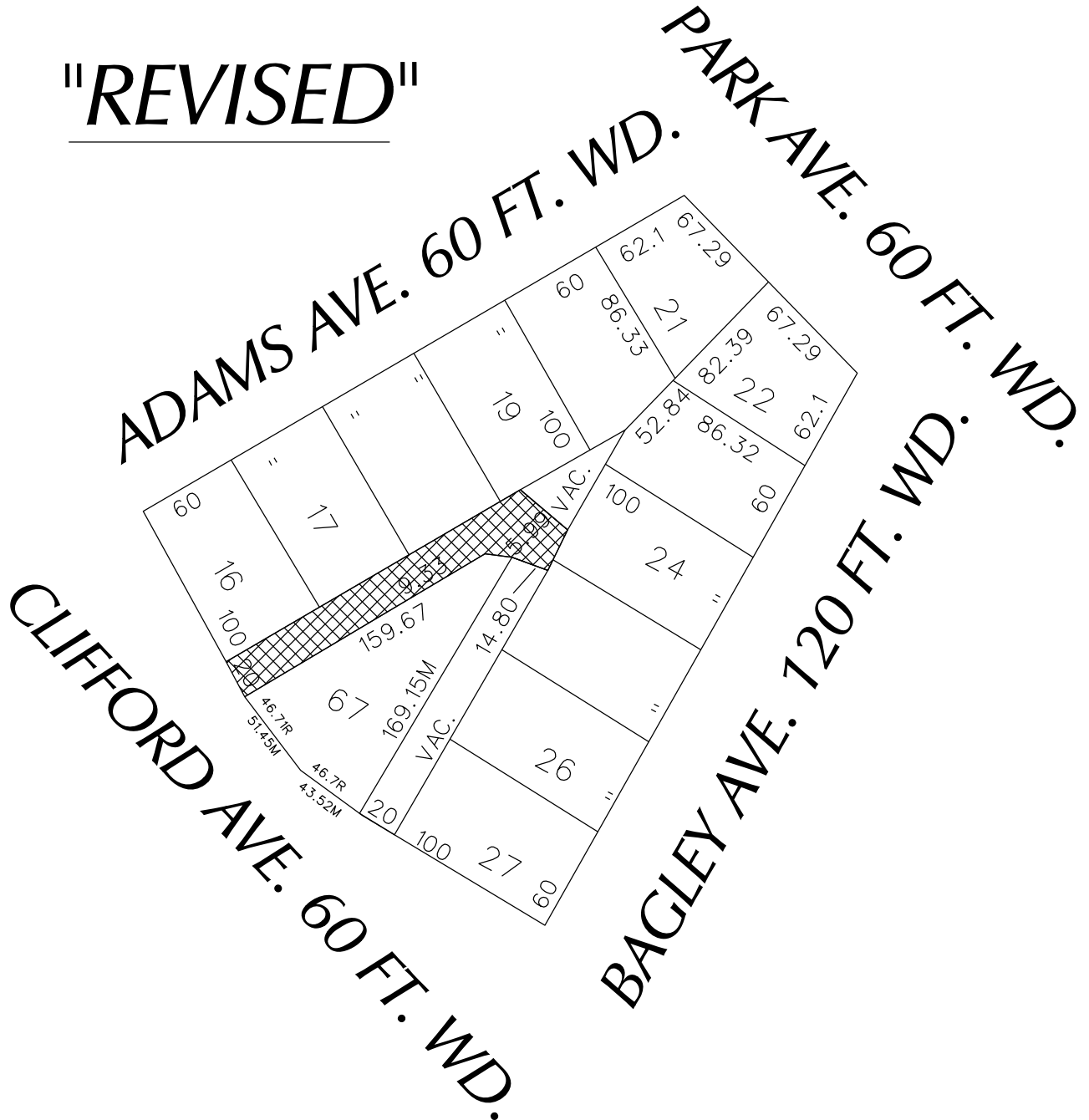


PETITION NO. 1291
 GIFFELS WEBSTER
 28 W. ADAMS, SUITE 1200
 DETROIT, MICHIGAN 48226
 C/O BRIAN ELLISON
 PHONE NO. 313 397-5863



"REVISED"



- CONVERSION TO EASEMENT
 (Underground Only)

(FOR OFFICE USE ONLY)

CARTO 28 B

B					
A	CHANGING TERMINOLOGY TO "CONVERSION TO EASEMENT (Underground Only)"	WLW	KSM	KSM	4/21/17
DESCRIPTION		DRWN	CHKD	APPD	DATE
REVISIONS					
DRAWN BY	WLW	CHECKED			
DATE	02-27-17	APPROVED			

CONVERSION TO EASEMENT
 (Underground Only)
 THE EAST/WEST PUBLIC ALLEY VARIOUS WIDTHS
 IN THE BLOCK BOUND BY
 CLIFFORD, ADAMS, PARK
 AND BAGLEY AVE.

CITY OF DETROIT
 CITY ENGINEERING DEPARTMENT
 SURVEY BUREAU

JOB NO. 01-01

DRWG. NO. X 1291