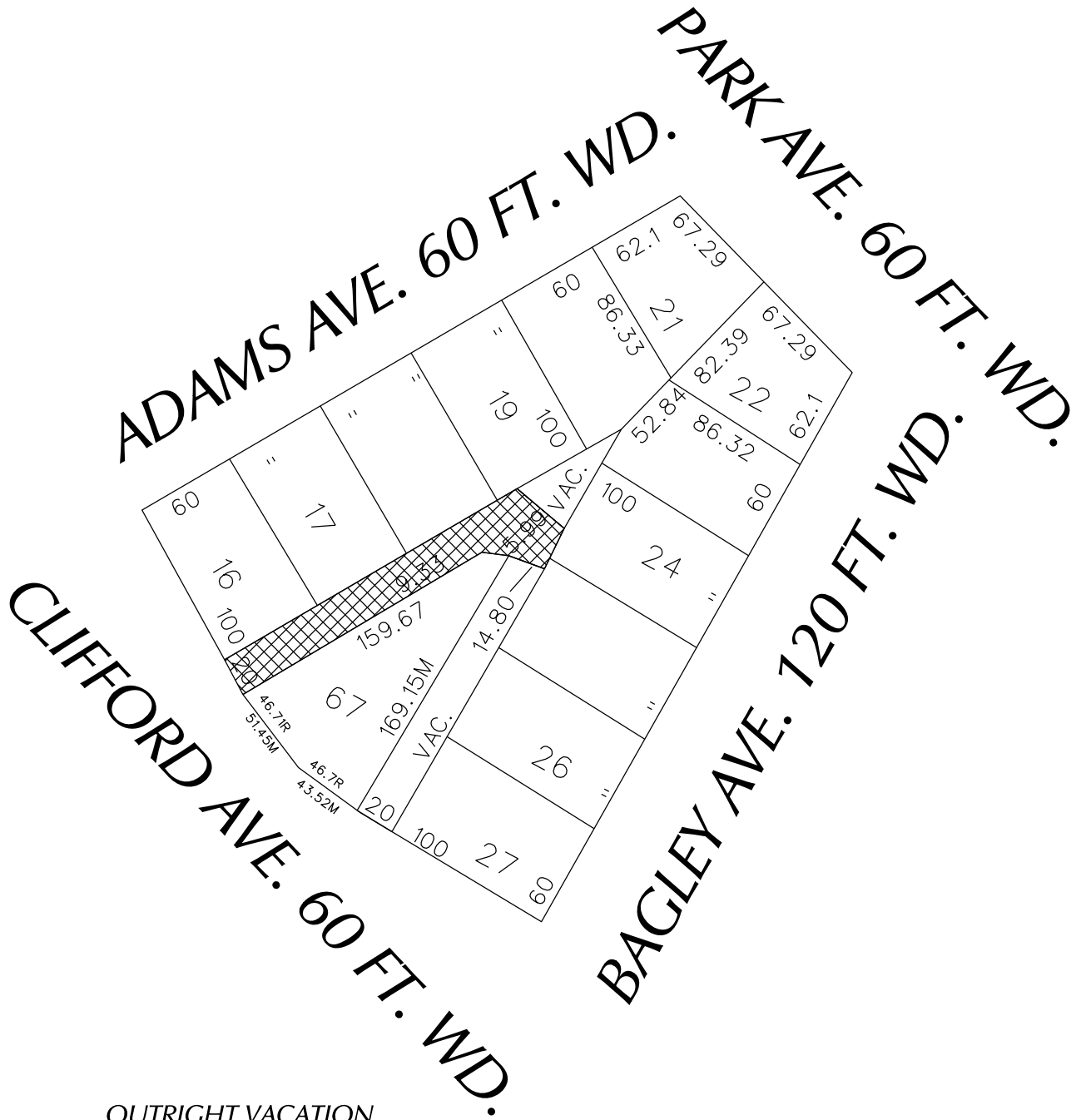




PETITION NO. 1291
 GIFFELS WEBSTER
 28 W. ADAMS, SUITE 1200
 DETROIT, MICHIGAN 48226
 C/O BRIAN ELLISON
 PHONE NO. 313 397-5863



 OUTRIGHT VACATION
 (Above Ground)
 CONVERSION TO EASEMENT
 (Below Ground)

(FOR OFFICE USE ONLY)

CARTO 28 B

B					
A					
DESCRIPTION	DRWN	CHKD	APPD	DATE	
REVISIONS					
DRAWN BY	WLW	CHECKED			
DATE	02-27-17	APPROVED			

REQUEST TO OUTRIGHT VACATE (Above Ground)
 AND CONVERSION TO EASEMENT (Below Ground)
 THE EAST/WEST PUBLIC ALLEY
 VARIOUS WIDTHS
 IN THE BLOCK BOUND BY
 CLIFFORD, ADAMS, PARK
 AND BAGLEY AVE.

CITY OF DETROIT CITY ENGINEERING DEPARTMENT SURVEY BUREAU	
JOB NO.	01-01
DRWG. NO.	X 1291