

**City of Detroit**  
**OFFICE OF THE CITY CLERK**

Janice M. Winfrey  
City Clerk

Vivian A. Hudson  
Deputy City Clerk

**DEPARTMENTAL REFERENCE COMMUNICATION**

*Tuesday, August 23, 2016*

*To: The Department or Commission Listed Below*

*From: Janice M. Winfrey, Detroit City Clerk*

---

The following petition is herewith referred to you for report and recommendation to the City Council.

In accordance with that body's directive, kindly return the same with your report in duplicate within four (4) weeks.

---

DPW - CITY ENGINEERING DIVISION

**1258**     *RecoveryPark, request to vacate and convert to easement certain public alleys for RecoveryPark's Beta Farm.*

# RecoveryPark

August 16, 2016

Honorable City Council  
C/o City Clerk  
200 Coleman A. Young Municipal Center  
2 Woodward Avenue  
Detroit, Michigan 48226

CITY CLERK 16 AUG 2016 4:31:28 PM

RE: Request to vacate and convert to easement certain public alleys for RecoveryPark's Beta Farm.


RecoveryPark at 5470 Chene St., Detroit, MI 48211, respectfully requests to vacate and convert to easement the east/west alley (20' wide) and two north/south alleys (20' wide) located in the block surrounded by Kirby, Chene, Frederick and Dubois Streets. The requested changes in public rights-of-way are to better facilitate RecoveryPark's Phase 1 project: Beta Farm. The Beta Farm involves constructing ten high tunnels for year round production and processing of mixed fresh vegetables for sale to local restaurants.

RecoveryPark controls 21 of the 22 parcels adjacent to the alley. The remaining parcel is vacant and owned by Peacekeepers International Fellowship.

We began RecoveryPark with the vision that Detroit can have a new future with local, live foods as the basis for walkable neighborhoods. For this to happen, there must also be opportunities for everyone to participate in the workforce. Veterans, returning citizens, challenged workers, those in recovery and other marginalized citizens struggle daily for the ability to care for themselves and their families. They deserve opportunities to work a meaningful job, earn a decent wage, own their own business and restore personal dignity. Working with our partners we are putting in place businesses and programs which will help to transform vacant and blighted areas into revitalized communities.

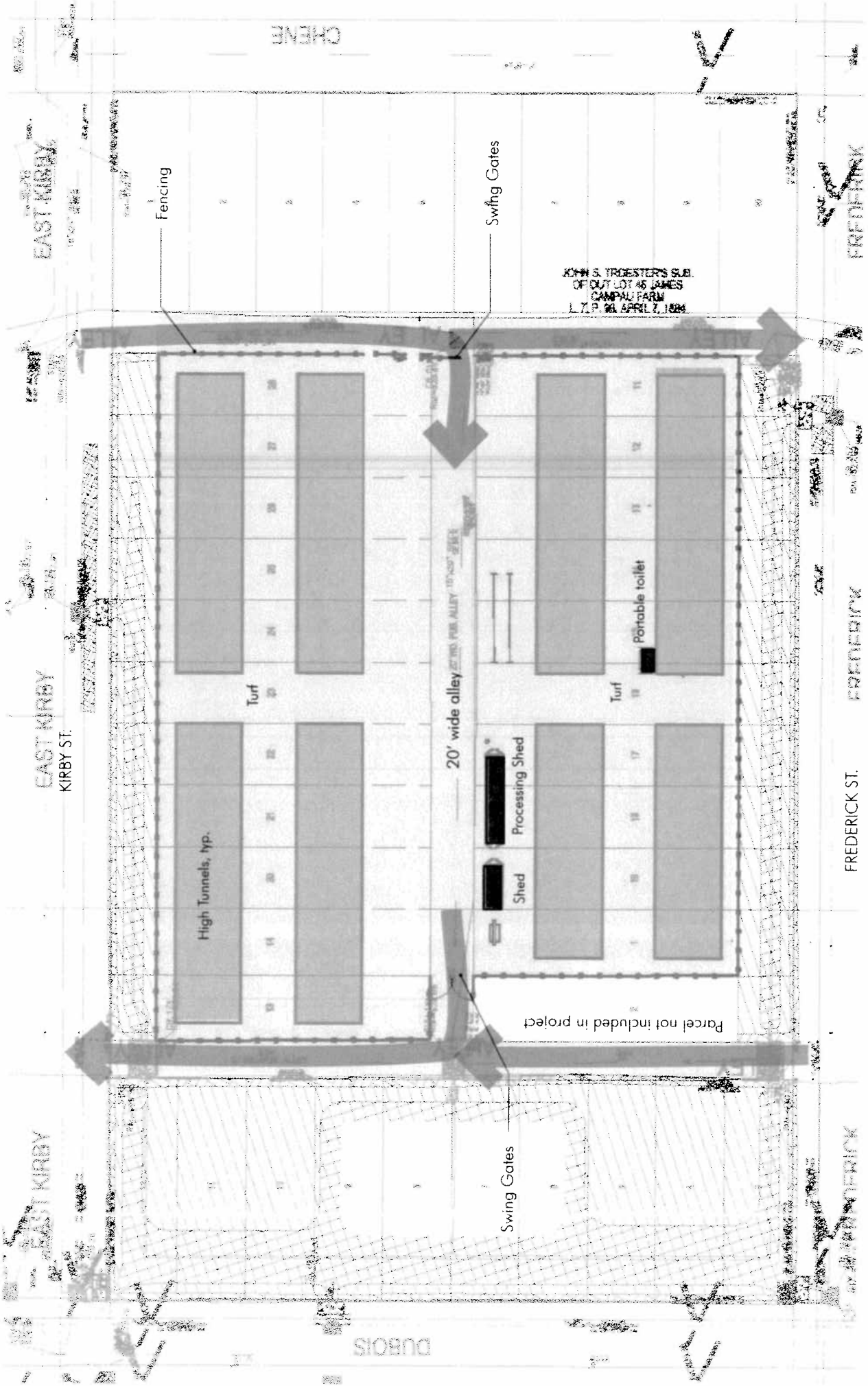
Drawings are attached for your use. If you should have any questions, please do not hesitate to contact me at 313-737-3710 or [gwozniak@recoverypark.org](mailto:gwozniak@recoverypark.org).

Thank you,



Gary Wozniak  
RecoveryPark  
President and CEO

# Beta Farm - proposed alley use



NOT TO SCALE - NORTH

