

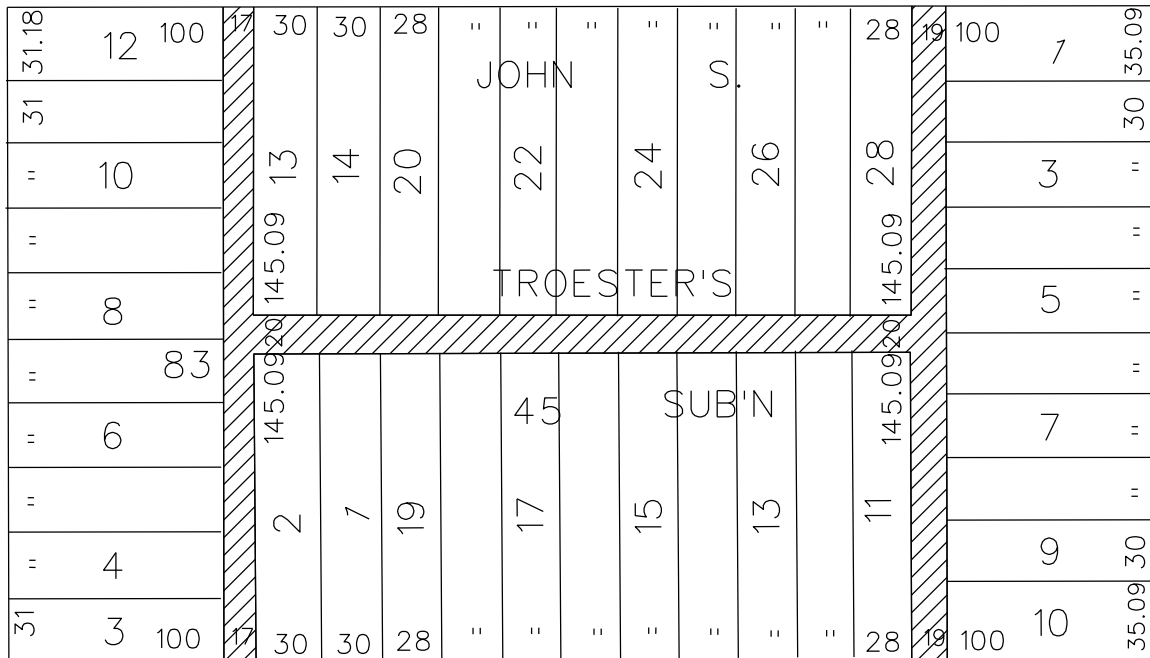
PETITION NO. 1258
 RecoveryPark
 5470 CHENE ST.
 DETROIT, MICHIGAN 48221
 C/O GARY WOZNIAK
 PHONE NO. 313 737-3710



DUBOIS AVE. 50 FT. WD.

KIRBY AVE. 60 FT. WD.

CHENE ST. 66 FT. WD.



FREDERICK AVE. 60 FT. WD.



- REQUESTED CONVERSION TO EASEMENT

(FOR OFFICE USE ONLY)

CARTO 40 B

| B | | | | | |
|-------------|----------|----------|------|------|--|
| A | | | | | |
| DESCRIPTION | DRWN | CHKD | APPD | DATE | |
| REVISIONS | | | | | |
| DRAWN BY | WLW | CHECKED | | | |
| DATE | 08-29-16 | APPROVED | | | |

REQUEST TO CONVERT TO EASEMENT
 THE EAST/WEST PUBLIC ALLEY, 20 FT. WD.
 AND THE NORTH/SOUTH PUBLIC ALLEYS
 VARIOUS WIDTHS
 IN THE BLOCK BOUND BY
 FREDERICK, DUBOIS, KIRBY AVE.
 AND CHENE ST.

| | |
|---|--------|
| CITY OF DETROIT CITY ENGINEERING DEPARTMENT SURVEY BUREAU | |
| JOB NO. | 01-01 |
| DRWG. NO. | X 1258 |