



City of Detroit
Inter-Departmental Communication

TO: Richard Doherty, City Engineer
City Engineering/Department of Public Works

FROM: Debra Singleton, Engineer
Detroit Water and Sewerage Department

DATE: August 10, 2016

RE: Petition No. 1172
Requested Encroachment Into Woodward At 620 to 630 With Storefront Canopy
And Café Seating

We have reviewed the above Petition received by this office on June 14, 2016. With regard to DWSD's interests, our comments are as follows:

- Our records indicate that there are water mains and sewers in the area of encroachments. DWSD has no objection to the requested encroachments provided that the attached Provisions for Encroachment are strictly followed.

If you have any questions, please call me at (313) 267-8309.

Sincerely,

A handwritten signature in black ink, appearing to read 'Debra Singleton', with a long, sweeping flourish extending to the right.

Debra Singleton
Engineer
Permits Section

DS//gl

Attachments

CC: Mohamad Farhat, CSF

Michael Duggan, Mayor

City of Detroit
**City Engineering Division, Department of Public Works
Survey Bureau**

NOTICE OF PROPOSED CHANGE IN PROPERTY

Date: 06/14/2016

Petition: x1172

- | | |
|--|--|
| <input type="checkbox"/> AT&T Telecommunication | <input type="checkbox"/> Berm Use |
| <input type="checkbox"/> Comcast Television (CATV) | <input type="checkbox"/> Conversion to Easement |
| <input type="checkbox"/> Detroit Edison (DTE) | <input type="checkbox"/> Dedication |
| <input type="checkbox"/> Fire Department | <input checked="" type="checkbox"/> Encroachment |
| <input type="checkbox"/> Great Lakes Water Authority | <input type="checkbox"/> Temporary Closing |
| <input type="checkbox"/> Michcon (DTE) | <input type="checkbox"/> Vacation |
| <input type="checkbox"/> Planning & Development Department | |
| <input type="checkbox"/> Public Lighting Authority | |
| <input type="checkbox"/> Public Lighting Department | |
| <input type="checkbox"/> Police Department | |
| <input type="checkbox"/> Solid Waste Division, DPW | |
| <input type="checkbox"/> Street Design Bureau, DPW | |
| <input type="checkbox"/> Street Maintenance Division, DPW | |
| <input type="checkbox"/> Traffic Engineering Division, DPW | |
| <input type="checkbox"/> Water and Sewerage Department | |
| <input type="checkbox"/> _____ | |

A petition drawing is attached. Property shown on the attached print is proposed to be changed as indicated. Kindly report (using the back of this sheet) the nature of your services, if any affected by the proposed change and the estimated costs of removing and rerouting such services (if necessary).

Please return one copy to City Engineering Division, DPW within two weeks of the submittal date. Retain one copy and print for you file.

Ron Brundidge, Director, Department of Public Works

By: Richard Doherty, CED DPW
City Engineer

**TO: City Engineering Division, DPW
2 Woodward Ave., Suite 642
Detroit, Michigan 48226-3462
Survey Bureau: 313-224-3970**

Petition: x1172

The proposed change in property (referred to on the other side of this sheet) would affect our services as follows:

- Not Involved

- Involved; but asking you to hold action on this petition until further notice.

- Involved; but no objections to the property change.

- Involved; but no objections to the property change...provided as easement of the full width of the public right-of-way (street, alley or other public place) is reserved.

- Involved; the nature of our services and the estimated costs of removing and/or rerouting such services are:

(Utility or City Department)

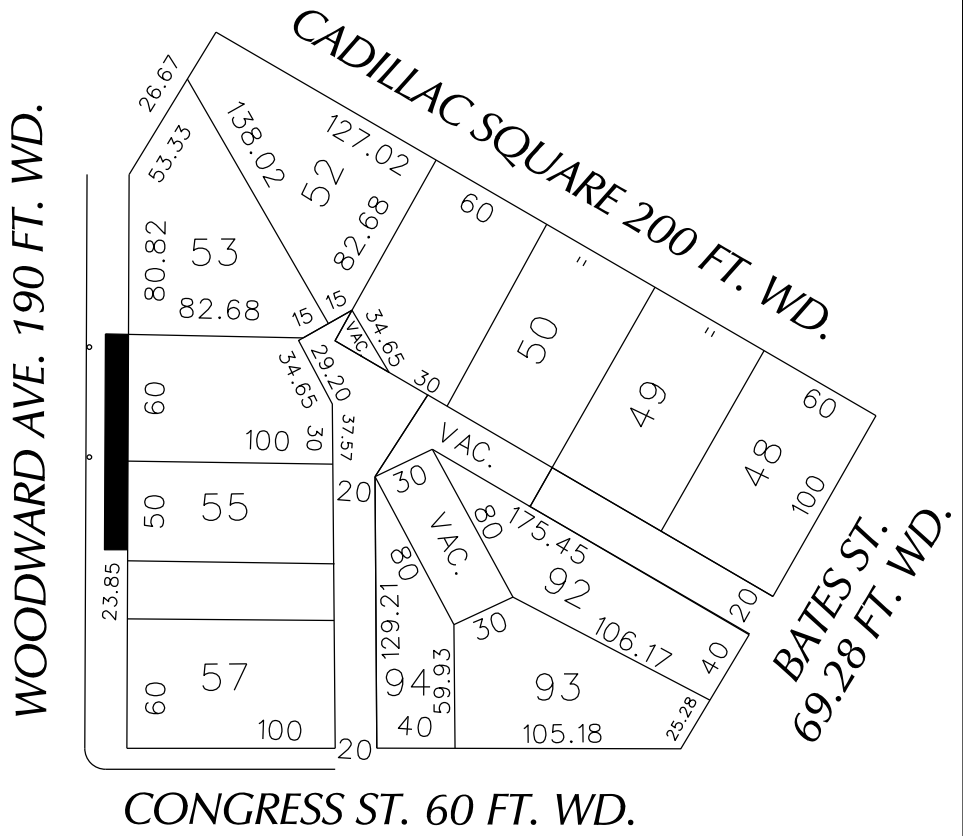
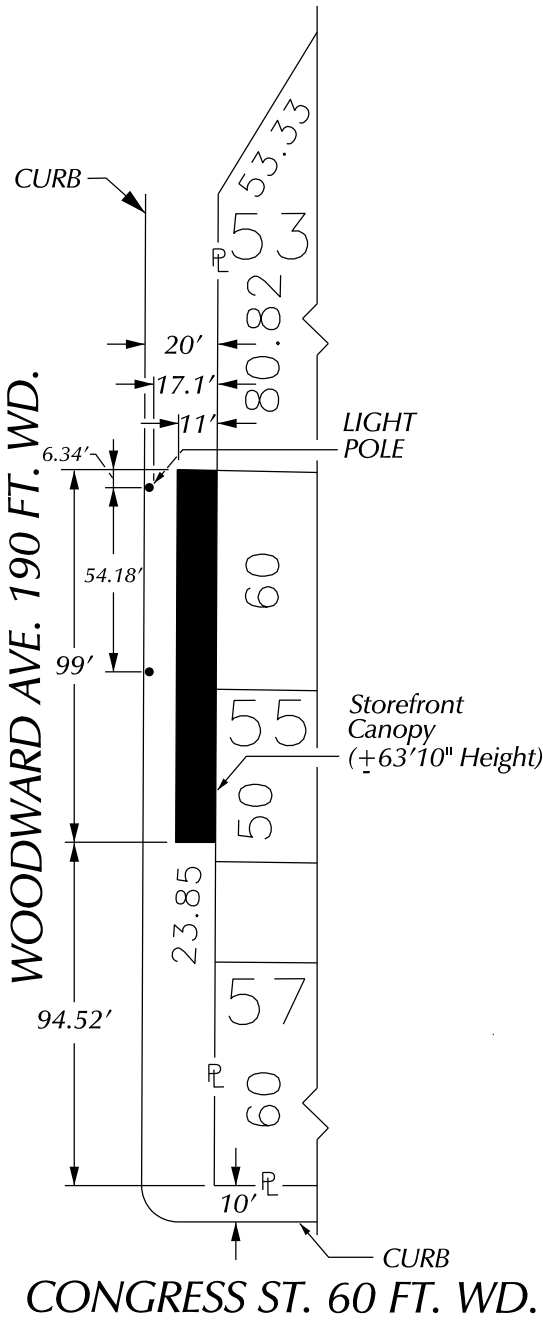
By

Title

Date

Area code – Telephone number

PETITION NO. 1172
 GIFFELS WEBSTER
 28 W. ADAMS, SUITE 1200
 DETROIT, MICHIGAN 48226
 C/O DEIRDRE CLEIN
 PHONE NO. 313 962-4442



 - REQUEST ENCROACHMENT
 (With Storefront Canopy
 and Cafe' Seating)

(FOR OFFICE USE ONLY)

CARTO 28 F

**REQUEST ENCROACHMENT
 INTO WOODWARD
 AT 620 - 630 WOODWARD AVE.
 (With Storefront Canopy
 and Cafe' Seating)**

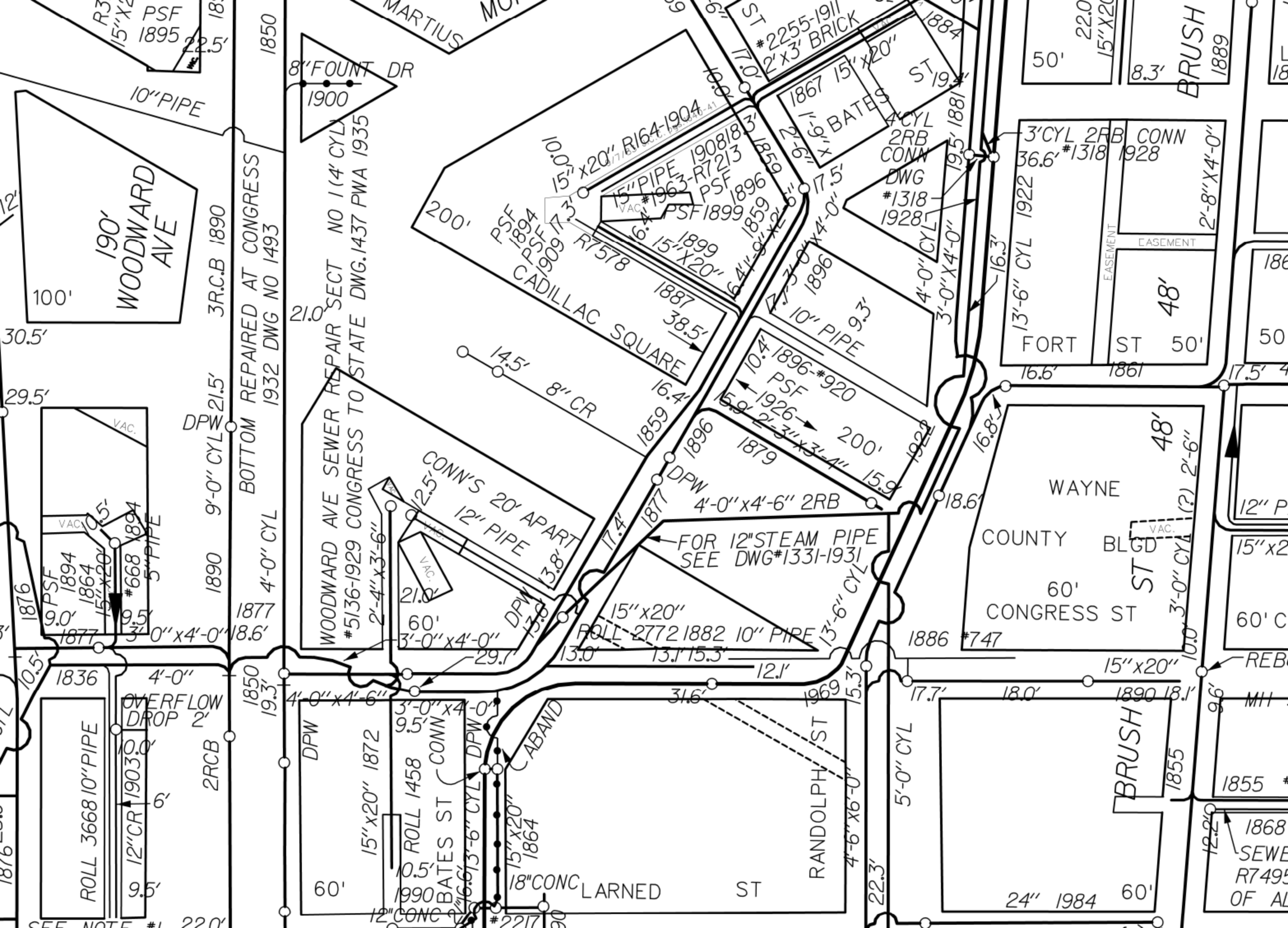
B					
A					
DESCRIPTION		DRWN	CHKD	APPD	DATE
REVISIONS					
DRAWN BY	WLW	CHECKED			
DATE	06-14-16	APPROVED			

CITY OF DETROIT CITY ENGINEERING DEPARTMENT SURVEY BUREAU	
JOB NO.	01-01
DRWG. NO.	X 1172

PROVISIONS FOR ENCROACHMENT For Petition 1172

Detroit Water and Sewerage (DWSD) agree to the proposed encroachment subject to the fulfilling of the following provisions:

1. By approval of this petition the (DWSD) does not waive any of its rights to its facilities located in the right of way, and at all time, DWSD, its agents or employees, shall have the right to enter upon the right of way to maintain, repair, alter, service, inspect, or install its facilities. All costs incident to the damaging, dismantling, demolishing, removal and replacement of structures or other improvements herein permitted and incurred in gaining access to DWSD's facilities for maintenance, repairing, alteration, servicing or inspection caused by the encroachment shall be borne by the petitioner. All costs associated with gaining access to DWSD's facilities, which could normally be expected had the petitioner not encroached into the right of way shall be borne by DWSD.
2. All construction performed under this petition shall not be commenced until after five (5) days written notice to DWSD. Seventy-two (72) hours notice shall also be provided in accordance with P.A. 53 1974, as amended, utilizing the MISS DIG one call system.
3. Construction under this petition is subject to inspection and approval by DWSD forces. The cost of such inspection shall, at the discretion of DWSD, be borne by the petitioner.
4. If DWSD facilities located within the right of way shall break or be damaged as the result of any action on the part of the petitioner, then in such event the petitioner agrees to be liable for all costs incident to the repair, replacement or relocation of such broken or damaged DWSD facilities.
5. The petitioner shall hold DWSD harmless for any damage to the encroaching device constructed or installed under this petition, which may be caused by the failure of DWSD's facilities.



190' WOODWARD AVE

CADILLAC SQUARE

WAYNE COUNTY BLDG

BRUSH

RANDOLPH ST

LARNED ST

BOTTOM REPAIRED AT CONGRESS 1932 DWG NO 1493

WOODWARD AVE SEWER REPAIR SECT NO 1 (4' CYL) #5136-1929 CONGRESS TO STATE DWG.1437 PWA 1935

FOR 12" STEAM PIPE SEE DWG #1331-1931

3' CYL 2RB CONN 36.6' #1318 1928

48'

48'

ST

60'

CONGRESS ST

15" x 20"

18.0'

18.1'

18.90

18.1'

18.55

18.55

18.68

18.84

18.96

19.00

19.00

19.00

19.00

19.00

19.00

19.00

19.00

19.00

19.00

19.00

19.00

19.00

19.00

19.00

19.00

19.00

19.00

19.00

19.00

19.00

19.00

19.00

19.00

19.00

19.00

19.00

19.00

19.00

19.00

19.00

19.00

19.00

19.00

19.00

19.00

19.00

19.00

19.00

19.00

19.00

19.00

19.00

19.00

19.00

19.00

19.00

19.00

19.00

19.00

19.00

19.00

19.00

19.00

19.00

19.00

19.00

19.00

19.00

19.00

19.00

19.00

19.00

19.00

19.00

19.00

19.00

19.00

19.00

19.00

19.00

19.00

19.00

19.00

19.00

19.00

19.00

19.00

19.00

19.00

19.00

19.00

19.00

19.00

19.00

19.00

19.00

19.00

19.00

19.00

19.00

19.00

19.00

19.00

19.00

19.00

19.00

19.00

19.00

19.00

19.00

19.00

19.00

19.00

19.00

19.00

19.00

19.00

19.00

19.00

19.00

19.00

19.00

19.00

19.00

19.00

19.00

19.00

19.00

19.00

19.00

19.00

19.00

19.00

19.00

19.00

19.00

19.00

19.00

19.00

19.00

19.00

19.00

19.00

19.00

19.00

19.00

19.00

19.00

19.00

19.00

19.00

19.00

19.00

19.00

19.00

19.00

19.00

19.00

19.00

19.00

19.00

19.00

19.00

19.00

19.00

19.00

19.00

19.00

19.00

19.00

19.00

19.00

19.00

19.00

19.00

19.00

19.00

19.00

19.00

19.00

19.00

19.00

19.00

19.00

19.00

19.00

19.00

19.00

19.00

19.00

19.00

19.00

19.00

19.00

19.00

19.00

19.00

19.00

19.00

19.00

19.00

19.00

19.00

19.00

19.00

19.00

19.00

19.00

19.00

19.00

19.00

19.00

19.00

19.00

19.00

19.00

19.00

19.00

19.00

19.00

19.00

19.00

19.00

19.00

19.00

19.00

19.00

19.00

19.00

19.00

19.00

19.00

19.00

19.00

19.00

19.00

19.00

19.00

19.00

19.00

19.00

19.00

19.00

19.00

19.00

19.00

19.00

19.00

19.00

19.00

19.00

19.00

19.00

19.00

19.00

19.00

19.00

19.00

19.00

19.00

19.00

19.00

19.00

19.00

19.00

19.00

19.00

19.00

19.00

19.00

19.00

19.00

19.00

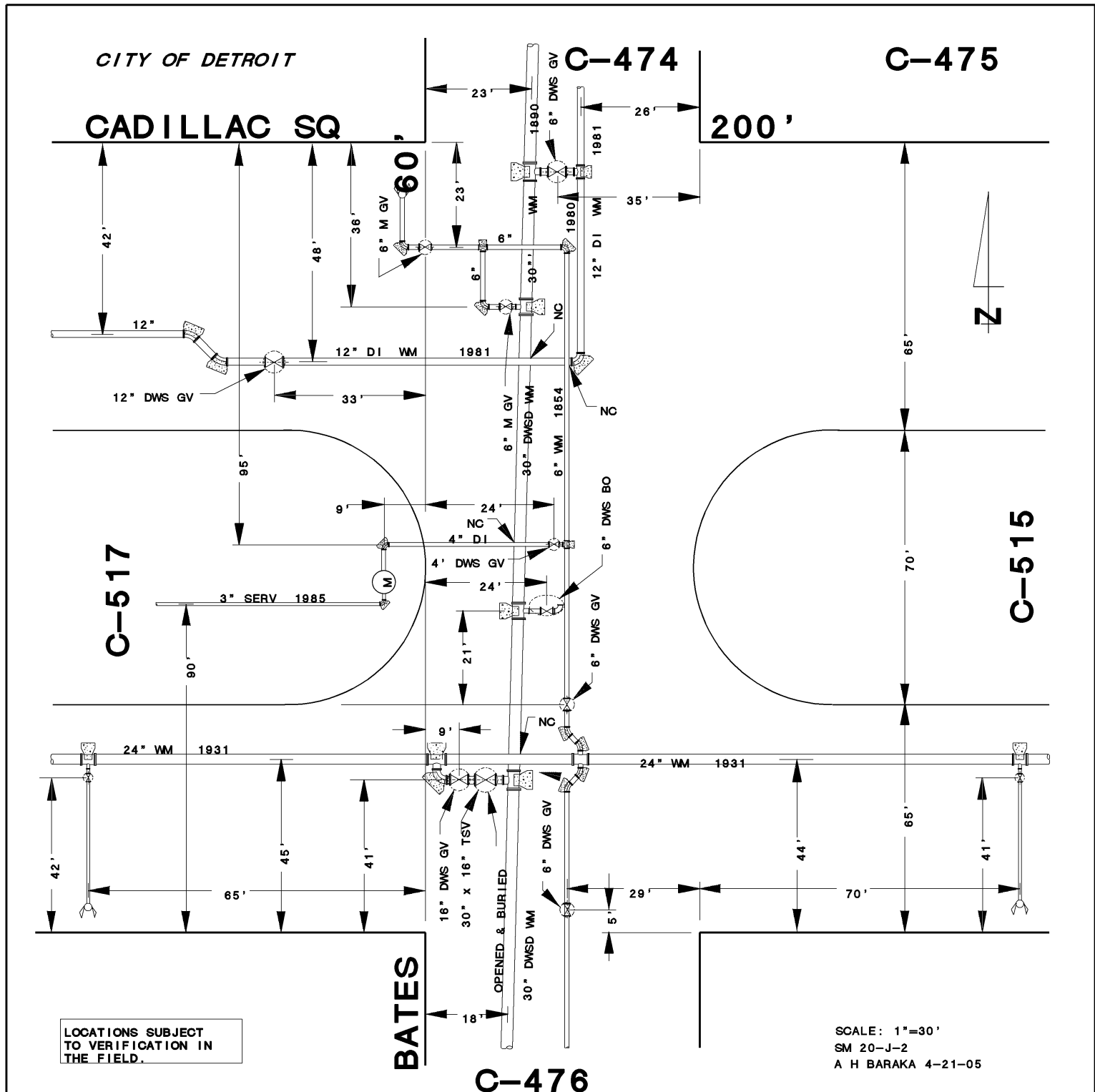
19.00

19.00

19.00

19.00

1906-A-13
 1980-C-22, 23,
 25, 39
 1983-G-30



CITY OF DETROIT

CADILLAC SQ

C-474

C-475

200'

C-517

C-515

BATES

C-476



LOCATIONS SUBJECT TO VERIFICATION IN THE FIELD.

SCALE: 1"=30'
 SM 20-J-2
 A H BARAKA 4-21-05

1931-G-19, 20