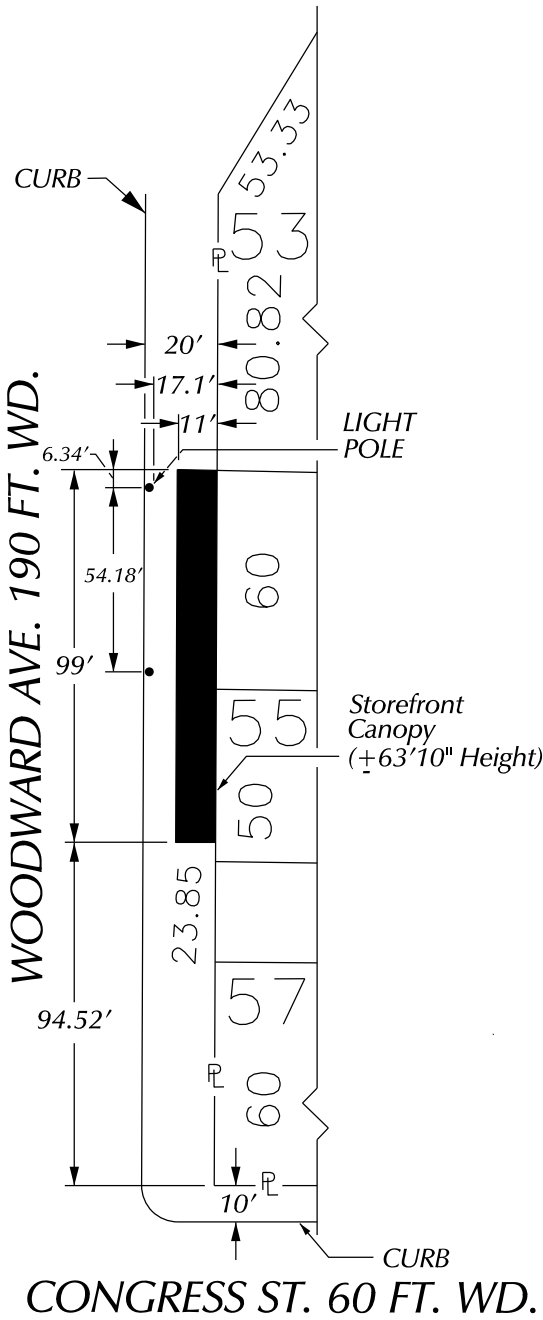
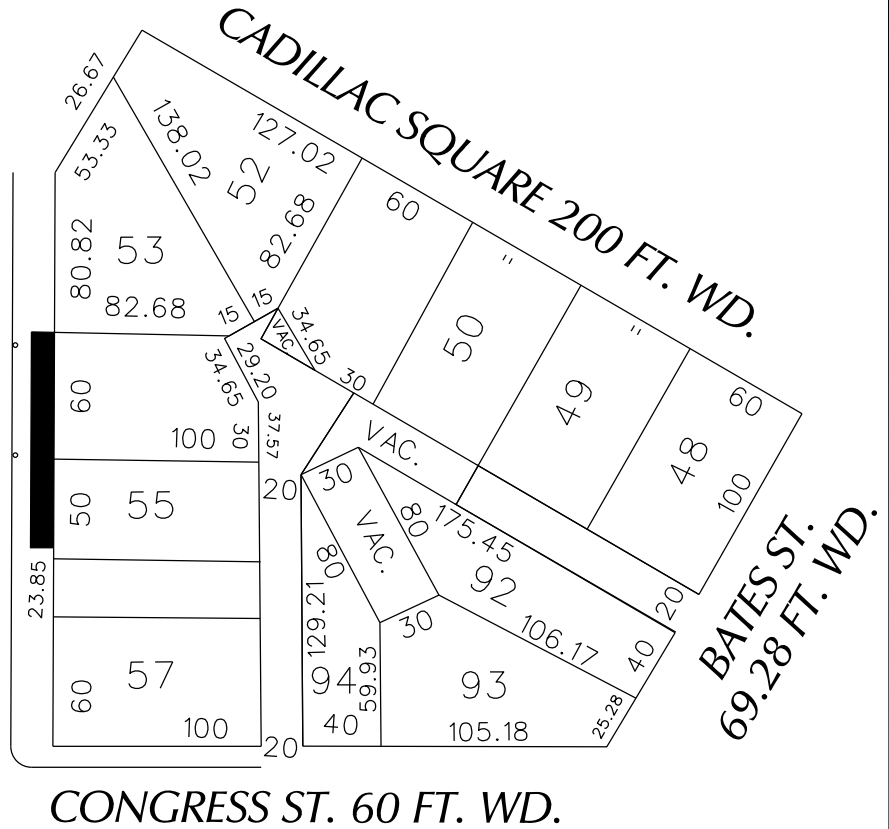


PETITION NO. 1172
 GIFFELS WEBSTER
 28 W. ADAMS, SUITE 1200
 DETROIT, MICHIGAN 48226
 C/O DEIRDRE CLEIN
 PHONE NO. 313 962-4442



WOODWARD AVE. 190 FT. WD.



■ - REQUEST ENCROACHMENT
 (With Storefront Canopy
 and Cafe' Seating)

(FOR OFFICE USE ONLY)

CARTO 28 F

B					
A					
DESCRIPTION		DRWN	CHKD	APPD	DATE
REVISIONS					
DRAWN BY	WLW	CHECKED			
DATE	06-14-16	APPROVED			

**REQUEST ENCROACHMENT
 INTO WOODWARD
 AT 620 - 630 WOODWARD AVE.
 (With Storefront Canopy
 and Cafe' Seating)**

CITY OF DETROIT CITY ENGINEERING DEPARTMENT SURVEY BUREAU	
JOB NO.	01-01
DRWG.NO.	X 1172