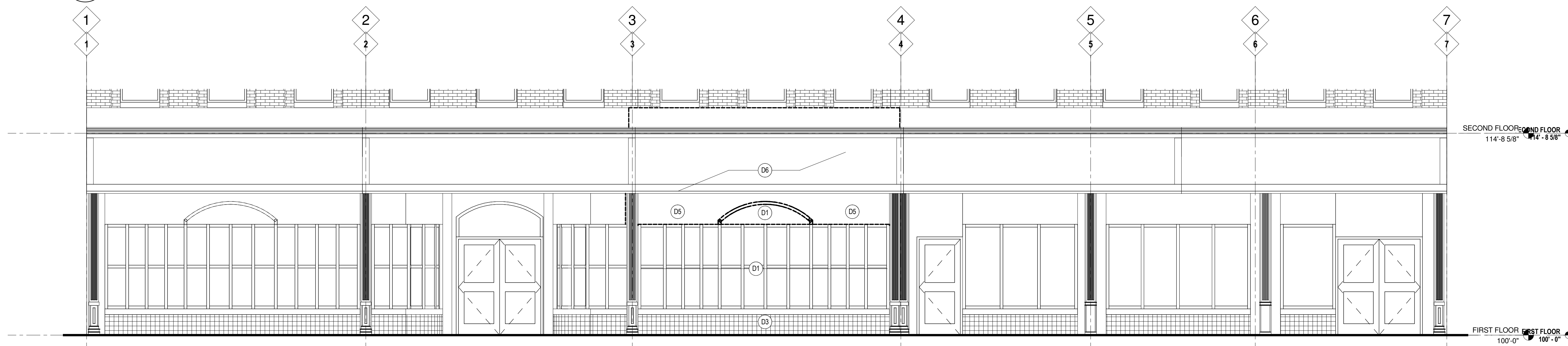


4 ENLARGED STOREFRONT ELEVATION - NEW WORK
 1/4" = 1'-0"



3 ENLARGED STOREFRONT ELEVATION - DEMOLITION
 1/4" = 1'-0"

KEYNOTES

- DEMOLITION ELEVATIONS**
 NOTE: NOT ALL NOTES MAY BE USED
- D1 REMOVE STOREFRONT SYSTEM IN ITS ENTIRETY. COORDINATE REMOVAL W/ NEW WORK DETAILS AND STRUCTURE.
 - D2 REMOVE MECHANICAL LOUVER
 - D3 REMOVE MASONRY AND WOOD STUD SILL WALL IN ITS ENTIRETY.
 - D4 REMOVE PLASTER HEADER AND BACK-UP WALL.
 - D5 REMOVE FASCIA PANELING AND TRIM. COORDINATE REMOVAL WITH NEW WORK DETAILS.
 - D6 EXISTING STEEL GUARDRAIL TO REMAIN
 - D7 REMOVE CMU INFILL (OR OTHER) AND PREP OPENING FOR NEW WORK. STONE SILL TO REMAIN. COORDINATE WITH NEW WORK DETAILS.
 - D8 DOOR AND FRAME TO REMAIN
 - D9 REMOVE DOOR, FRAME AND HARDWARE
 - D10 REMOVE EXTERIOR WINDOW AND WINDOW FRAME AND PREP OPENING FOR NEW WINDOW ASSEMBLY
 - D11 LOUVER AND FRAME TO REMAIN. REMOVE PLASTIC COVERING
 - D12 EXHAUST STACK AND FAN TO REMAIN
 - D13 WOOD PANEL AND EXHAUST VENTS TO REMAIN
 - D14 AC EQUIPMENT, PLATFORM AND SUPPORT STRUCTURE TO REMAIN
 - D15 REMOVE INFILL MATERIAL (CMU OR OTHER). PREP OPENING FOR NEW WINDOW
 - D16 REMOVE EXTERIOR WINDOW AND WINDOW FRAME AND PREP OPENING FOR NEW BRICK INFILL
 - D17 EXISTING INFILL MATERIAL (CMU OR OTHER) TO REMAIN



2 WEST ELEVATION - NEW WORK
 1/8" = 1'-0"



1 WEST ELEVATION - DEMOLITION
 1/8" = 1'-0"

Project Title

Bedrock

620 & 630 Woodward Building Renovation

Bedrock Real Estate Services

620 - 630 Woodward Avenue
 Detroit, Michigan 48226

Key Plan

Project Administrator

Jeff Zona

Project Designer

Katy Litwin

Project Architect / Engineer

Larry Hamilton

Drawn By

Katy Litwin

Q.M. Review

CM

Approved

App

Drawing Scale

No Scale

Issued for

Issue Date

HISTORIC REVIEW 10-08-14

DESIGN DEVELOPMENT 12-05-14

©2014 INTEGRATED design SOLUTIONS, LLC

Exterior Elevations

Reference Finish Floor Elevation: XXX'-X"

iDS Project Number Drawing Number

14148-2000 **A4.1**