

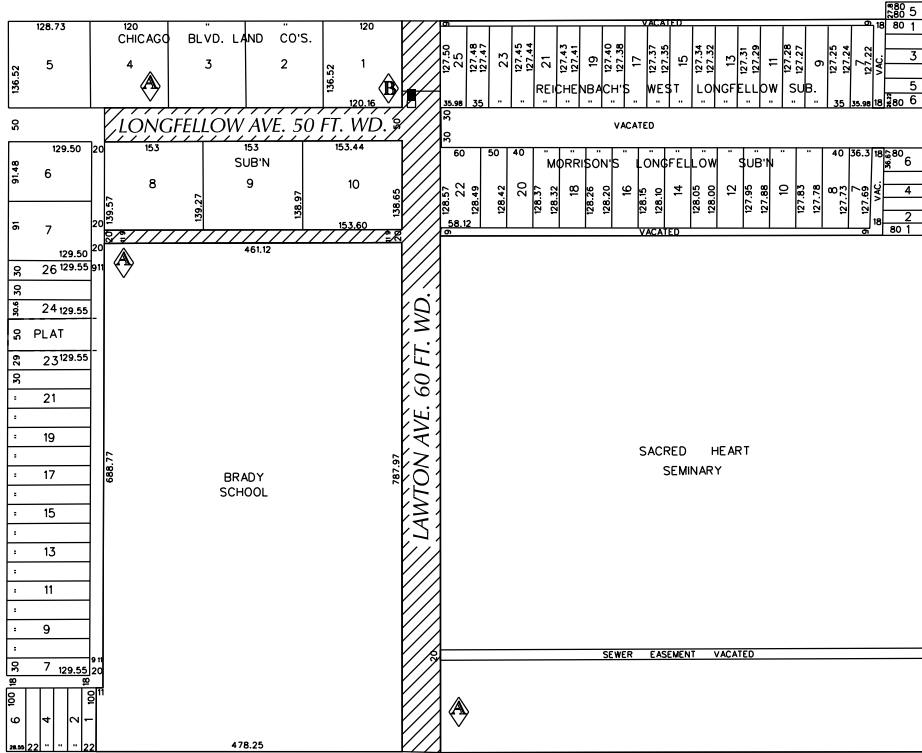
PETITION NO. 1171
 ARCHDIOCESE OF DETROIT
 12 STATE ST.
 DETROIT, MICHIGAN 48226
 C/O MIKE MCINERNEY
 PHONE NO. 313 596-7161

"REVISED"



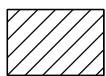
WEST CHICAGO AVE. 194 FT. WD.

GENESSEE AVE. 60 FT. WD.

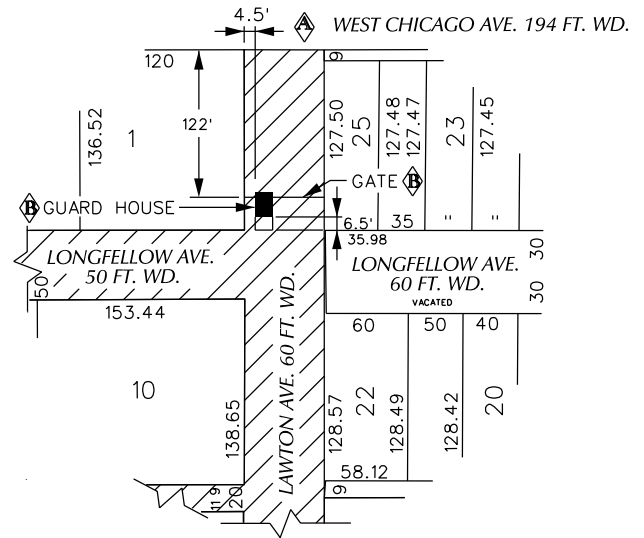


LINWOOD AVE. 86 FT. WD.

JOY RD. 66 FT. WD.



- CONVERSION TO EASEMENT



(FOR OFFICE USE ONLY)

CARTO 22 B

B	ADDING A GUARD SHACK AND GATE INTO LAWTON ST. R.O.W.	WLW	KSM	KSM	07/11/19
A	CHANGE FROM OUTRIGHT VACATION TO CONVERSION TO EASEMENT	WLW	KSM	KSM	07/11/19
DESCRIPTION		DRWN	CHKD	APPD	DATE
REVISIONS					
DRAWN BY	WLW	CHECKED		KSM	
DATE	06-14-16	APPROVED			

CONVERSION TO EASEMENT
 A PORTION OF LONGFELLOW AVE. 50 FT. WD.
 LAWTON AVE. 60 FT. WD. AND THE
 EAST/WEST PUBLIC ALLEY 20 FT. WD.
 IN THE AREA BOUND BY
 GENESSEE, W. CHICAGO, LINWOOD AVE.
 AND JOY RD.

CITY OF DETROIT
 CITY ENGINEERING DEPARTMENT
 SURVEY BUREAU

JOB NO. 01-01

DRWG. NO. X 1171