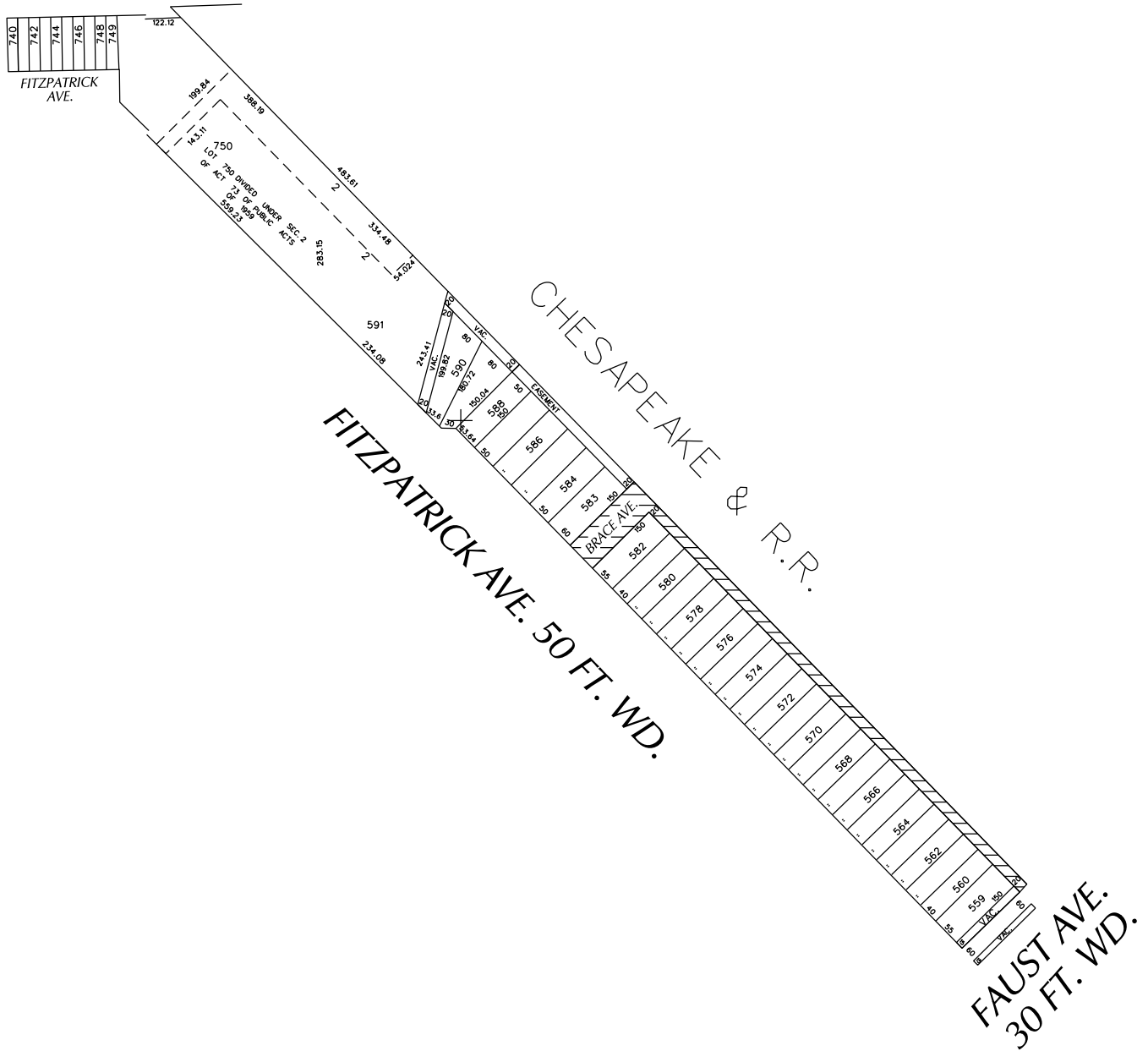


PETITION NO. 1129
 BODYWERK INC.
 18700 FITZPATRICK AVE.
 DETROIT, MICHIGAN 48228
 C/O CHRISTOPHER KRUSUSKY
 PHONE NO. 313 493-8877



PLYMOUTH AVE. 86 FT. WD.



 - REQUESTED CONVERSION TO EASEMENT

(FOR OFFICE USE ONLY)

CARTO 100 C

B					
A					
DESCRIPTION		DRWN	CHKD	APPD	DATE
REVISIONS					
DRAWN BY	WLW	CHECKED			
DATE	05-17-16	APPROVED			

REQUEST TO CONVERT TO EASEMENT
 BRACE AVE. 60 FT. WD. AND THE
 NORTH/SOUTH PUBLIC ALLEY, 20 FT. WD.
 IN THE AREA BOUND BY
 FAUST, FITZPATRICK, PLYMOUTH AVE.
 AND CHESAPEAKE & R.R.

CITY OF DETROIT CITY ENGINEERING DEPARTMENT SURVEY BUREAU	
JOB NO.	01-01
DRWG. NO.	X 1129