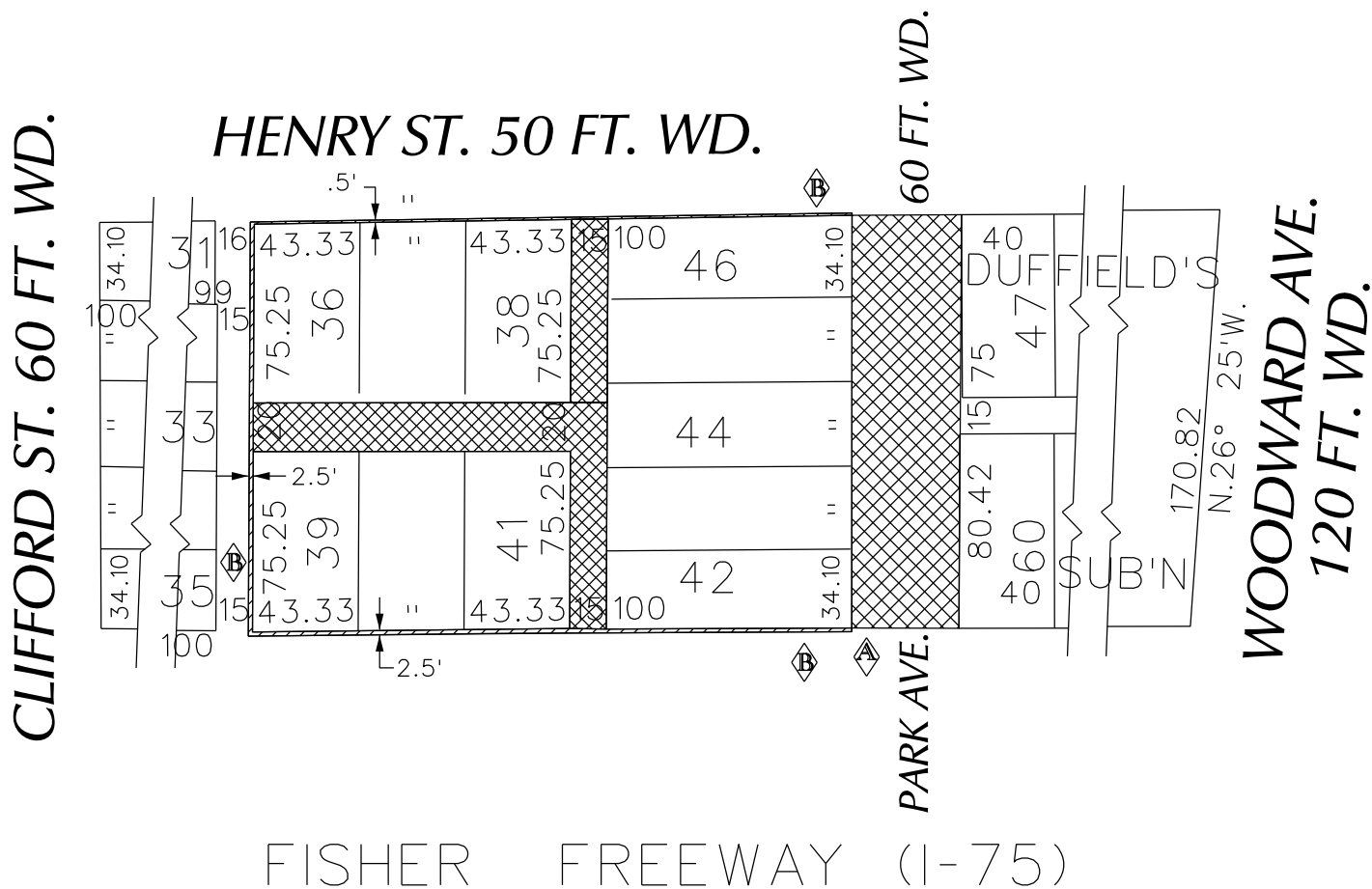


PETITION NO. 1099  
 GIFFELS WEBSTER  
 28 W. ADAMS, SUITE 1200  
 DETROIT, MICHIGAN 48226  
 C/O DEIRDRE CLEIN  
 PHONE NO. 313 962-4442

**"REVISED"**



- OUTRIGHT VACATION  
(Subsurface of Perimeter)
- OUTRIGHT VACATION

(FOR OFFICE USE ONLY)

CARTO 29 E

<b>B</b>	VACATE SUBSURFACE OF PERIMETER	WLW	KSM	KSM	10/24/16
<b>A</b>	ADDING PARK AVE. TO REQUEST TO OUTRIGHT VACATE.	WLW	KSM	KSM	10/24/16
<b>DESCRIPTION</b>		<b>DRWN</b>	<b>CHKD</b>	<b>APPD</b>	<b>DATE</b>
<b>REVISIONS</b>					
<b>DRAWN BY</b>	WLW	<b>CHECKED</b>			
<b>DATE</b>	04-26-16	<b>APPROVED</b>			

REQUEST TO OUTRIGHT VACATE  
 THE EAST/WEST AND THE NORTH/SOUTH  
 PUBLIC ALLEY VARIOUS WIDTHS  
 AND PARK AVE., 60 FT. WD.  
 IN THE AREA BOUND BY  
 CLIFFORD AND HENRY ST., WOODWARD AVE.  
 AND FISHER FWY. SERVICE DR.

<b>CITY OF DETROIT</b> CITY ENGINEERING DEPARTMENT SURVEY BUREAU	
<b>JOB NO.</b>	01-01
<b>DRWG. NO.</b>	X 1099