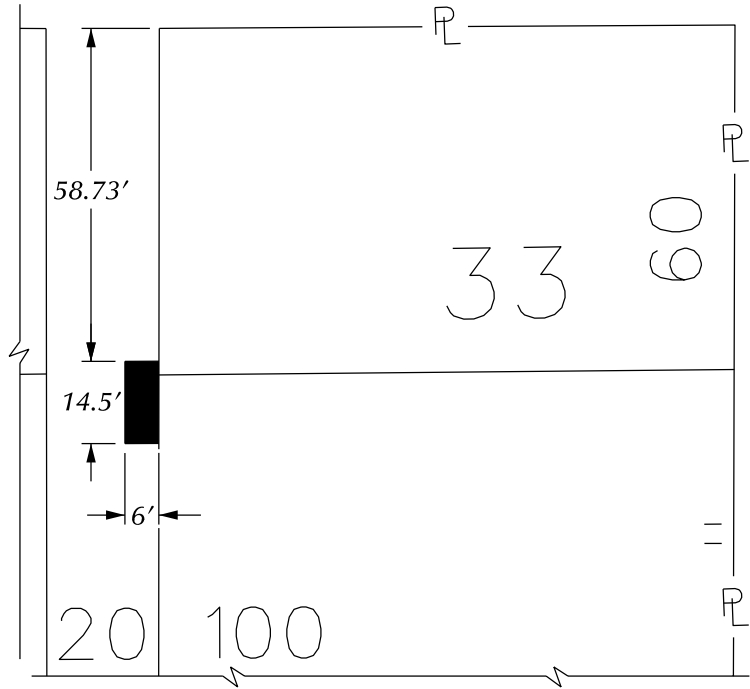


PETITION NO. 1098
 GIFFELS WEBSTER
 28 W. ADAMS, SUITE 1200
 DETROIT, MICHIGAN 48226
 C/O DEIRDRE CLEIN
 PHONE NO. 313 962-4442

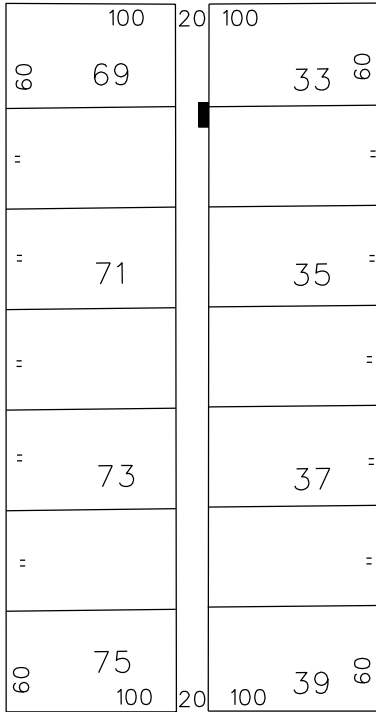


GD. RIVER AVE. 60 FT. WD.



GD. RIVER AVE. 60 FT. WD.

GRISWOLD ST. 60 FT. WD.



WOODWARD AVE. 120 FT. WD.

STATE ST. 60 FT. WD.

 - REQUEST ENCROACHMENT
 (With Ramp, Railing and Bollards)

(FOR OFFICE USE ONLY)

CARTO 28 B

B					
A					
DESCRIPTION		DRWN	CHKD	APPD	DATE
REVISIONS					
DRAWN BY		CHECKED			
DATE		APPROVED			
04-28-16					

REQUEST ENCROACHMENT
 INTO THE NORTH/SOUTH PUBLIC ALLEY
 AT 1261 WOODWARD
 (With Ramp, Railing and Bollards)

CITY OF DETROIT
 CITY ENGINEERING DEPARTMENT
 SURVEY BUREAU

JOB NO. 01-01
 DRWG. NO. X 1098