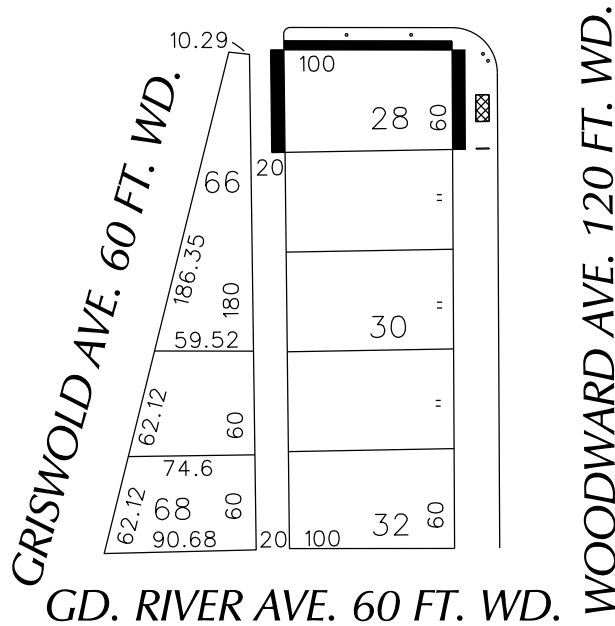
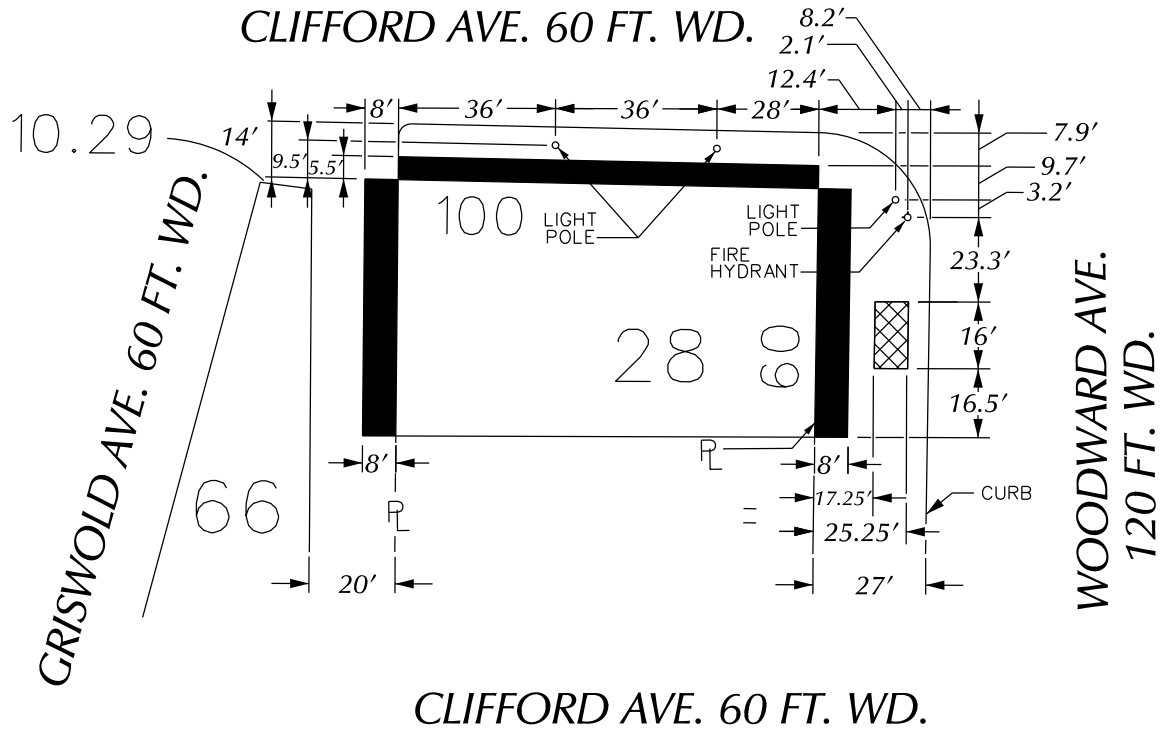
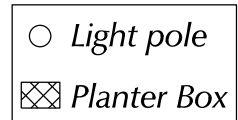


PETITION NO. 1031
 GIFFELS WEBSTER
 28 W. ADAMS, SUITE 1200
 DETROIT, MICHIGAN 48226
 C/O MICHAEL MARKS
 PHONE NO. 313 962-4442



- REQUEST ENCROACHMENT
 (With Canopies ± 11'-8" High)



CARTO 28 B

(FOR OFFICE USE ONLY)

B					
A					
DESCRIPTION		DRWN	CHKD	APPD	DATE
REVISIONS					
DRAWN BY	WLW	CHECKED			
DATE	03-21-16	APPROVED			

REQUEST ENCROACHMENT
 INTO CLIFFORD AND WOODWARD AVE.
 AND A PORTION OF THE NORTH/SOUTH
 PUBLIC ALLEY 20 FT. WD.
 AT 1449 WOODWARD AVE.
 (With Canopies)

CITY OF DETROIT CITY ENGINEERING DEPARTMENT SURVEY BUREAU	
JOB NO.	01-01
DRWG. NO.	X 1031