

PETITION NO. 1006  
 GIFFELS WEBSTER  
 28 W. ADAMS, SUITE 1200  
 DETROIT, MICHIGAN 48226  
 C/O DEIRDRE CLEIN  
 PHONE NO. 313 962-4442

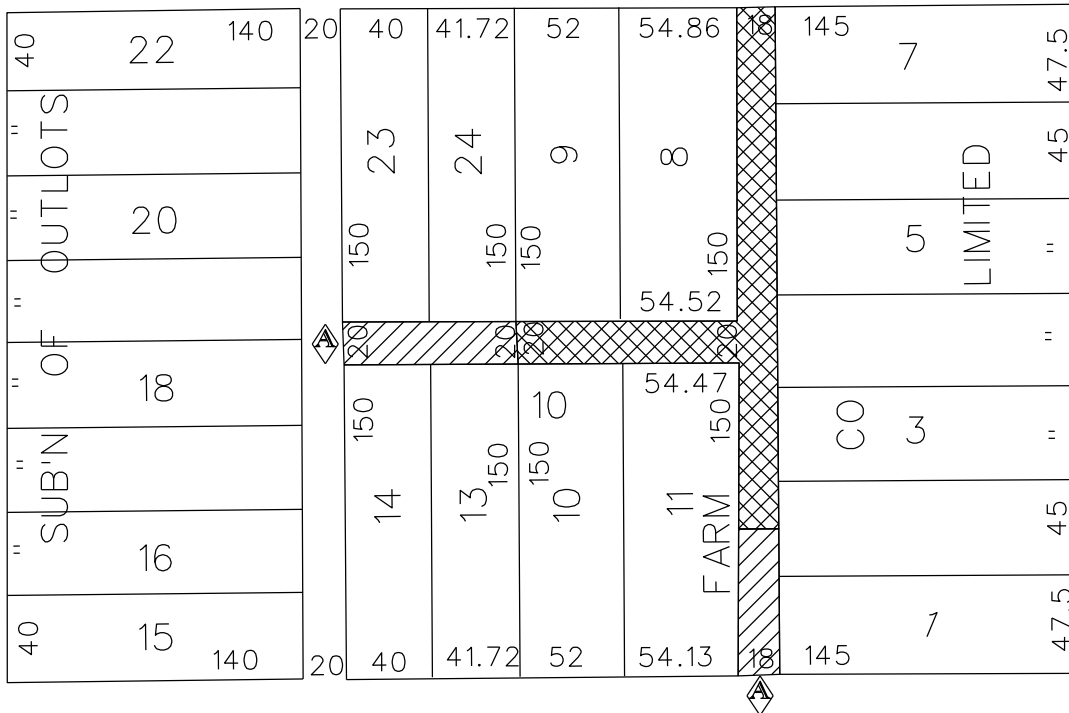


**"REVISED"**

SECOND BLVD. 150 FT. WD.

YORK ST. 50 FT. WD.

CASS AVE. 80 FT. WD.



ANTOINETTE ST. 50 FT. WD.



- REQUESTED CONVERSION TO EASEMENT



- OUTRIGHT VACATION

(FOR OFFICE USE ONLY)

CARTO 31 F

<b>B</b>	CHANGE PETITIONER FROM WAYNE STATE UNIVERSITY TO GIFFELS WEBSTER	WLW	KSM	KSM	3/21/17
<b>A</b>	CHANGE OUTRIGHT VACATION TO CONVERSION TO EASEMENT	WLW	KSM	KSM	3/21/17
<b>REVISIONS</b>		<b>DRWN</b>	<b>CHKD</b>	<b>APPD</b>	<b>DATE</b>
<b>DRAWN BY</b>	WLW	<b>CHECKED</b>			
<b>DATE</b>	03-09-16	<b>APPROVED</b>			

REQUEST TO OUTRIGHT VACATE AND CONVERT TO EASEMENT THE EAST/WEST AND NORTH/SOUTH PUBLIC ALLEYS VARIOUS WIDTHS IN THE BLOCK BOUND BY ANTIONETTE, YORK ST., CASS AVE. AND SECOND BLVD.

<b>CITY OF DETROIT</b>	
CITY ENGINEERING DEPARTMENT	
SURVEY BUREAU	
<b>JOB NO.</b>	01-01
<b>DRWG. NO.</b>	X 1006