

TO: City Engineering Division, DPW
2 Woodward Ave., Suite 642
Detroit, MI 48226-3462
Survey Bureau: 313-224-3970

Ref. No. 201512016
Petition No. 910

The proposed change in property (referred to above) would affect our services as follows:

- () Not Involved.
- () Involved; but asking you to hold action on this petition until further notice.
- () Involved; the nature of our services, and the estimated costs of removing and/or rerouting such services are:
- (X) Involved; have no objection to the requested encroachment into Bates St. at 65 Cadillac Square (with Storefront Canopy) as shown on drawing no. x910 dated 12/17/2015 provided that the bottom of the (aerial encroachment) canopy shall have a minimum vertical underclearance of 9' 2".

Traffic Engineering Division - DPW
(Utility or City Department)

for Ashok Patel
By



Head Transportation Engineer
Title

January 11, 2016
Date

313 224-1610
Area code-Telephone number

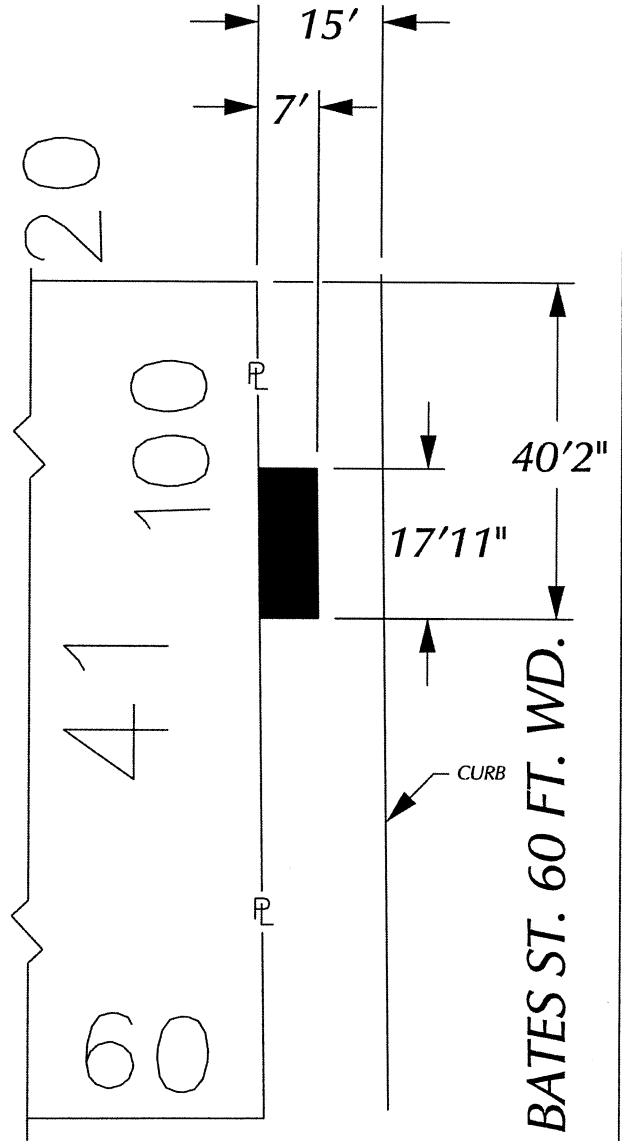
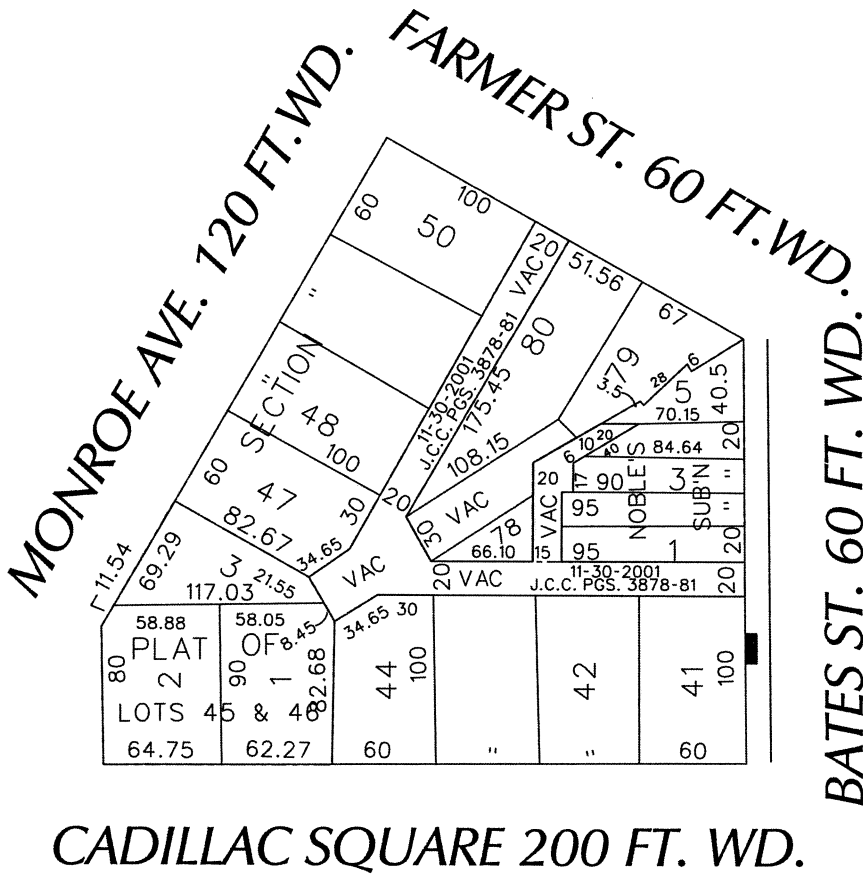
MA/ma

PÉTITION NO. 910
 RONNISCH CONSTRUCTION GROUP
 C/O FARBMAN GROUP
 4327 DELEMERE CT.
 ROYAL OAK, MICHIGAN 48073
 C/O PETE DEMBOWSKI
 PHONE NO. 248 549-4837



248-796-4496 (cell)

pdembowski@ronnisch.com



- REQUEST ENCROACHMENT
 (With Storefront Canopy)

(FOR OFFICE USE ONLY)

CARTO 28 A

B					
A					
DESCRIPTION	DRWN	CHKD	APPD	DATE	
REVISIONS					
DRAWN BY	WLW	CHECKED			
DATE	12-17-15	APPROVED			

REQUEST ENCROACHMENT
 INTO BATES ST.
 AT 65 CADILLIC SQUARE
 (With Storefront Canopy)

CITY OF DETROIT CITY ENGINEERING DEPARTMENT SURVEY BUREAU	
JOB NO.	01-01
DRWG. NO.	X 910