

**DTE Energy – Gas Co.
Data Integrity and Technology
One Energy Plaza, GO-838
City of Detroit, MI 48226**

November 5, 2015

Richard Doherty, CED DPW Head Engineer
City Engineering Division, DPW
2 Woodward Ave, Suite 642
Detroit, Michigan 48226-3462

RE: Petition #888: Request to Convert to Easement a portion of Birwood Ave 80 Ft. Wd. in the Block Bounded by Lyndon, Ilene, Intervale Ave and Meyers Rd.

- Not involved. **See Remarks**
- Involved: but asking you to hold action on this petition until further notice.
- Involved but have no objection to the property change - - provided that an easement of the full width of the public right-of-way (street, alley or other public place) is reserved.
- Involved: the nature of our services, and the estimated costs of removing, rerouting or abandonment of such all gas mains and/or services

REMARKS:

DTE Energy–Gas Company has no involvement, nor objection to the Appeal #888 as mentioned above. See enclosed strip print and attached notice of public hearing, for your use and information.

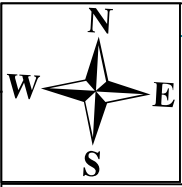
Please abide by Public Act 174, three (3) working days before you dig, dial toll free MISS DIG at: 1 – 800 – 482 – 7171.

DTE Energy Gas Leak Emergency Phone Number: 1- 800 – 947 – 5000.

Sincerely,

***RS* Russell & Thornton**
Drafter
Data Integrity and Technology

RET/
Enclosure



LYNDON

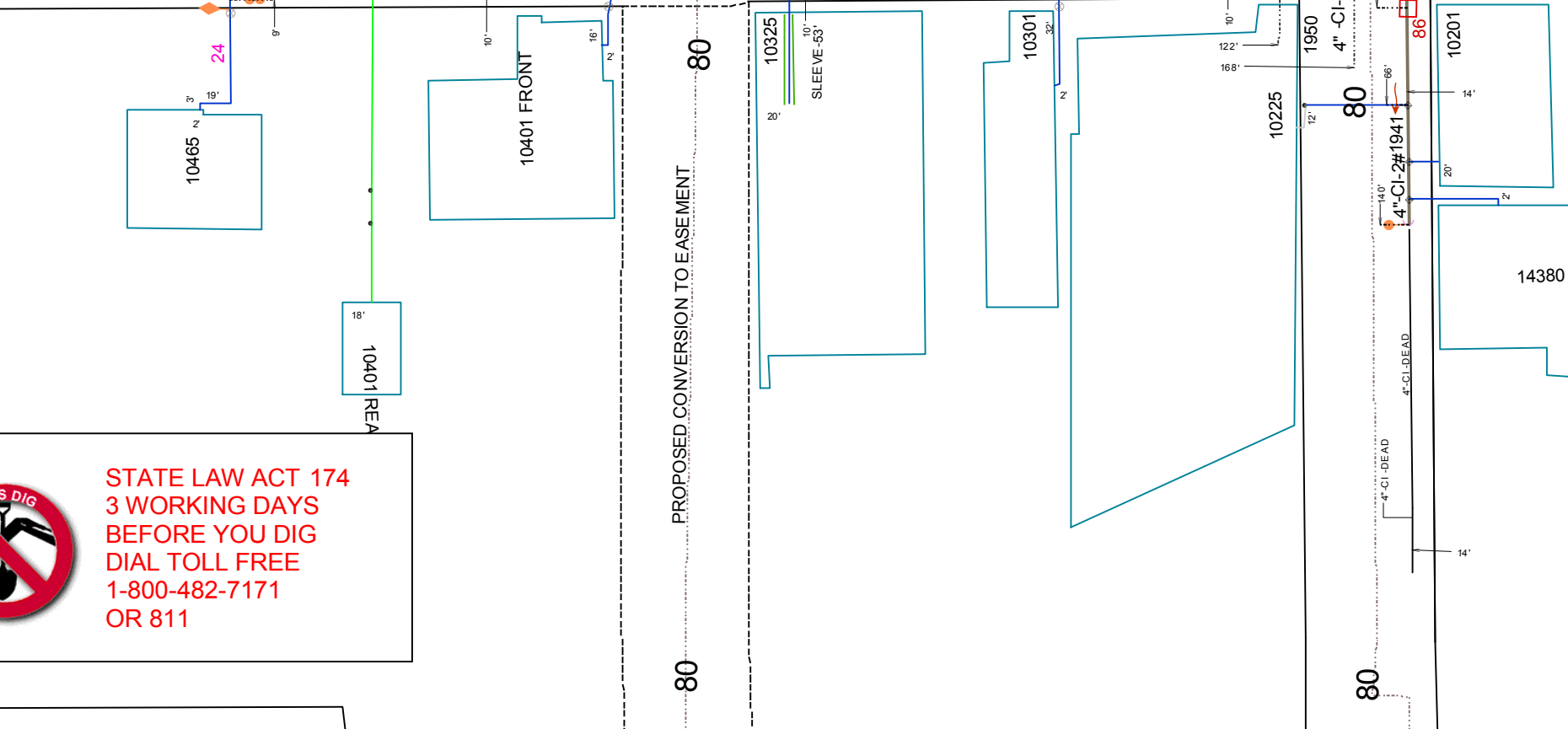
8" -CI-2# 1954

8" -CI-2# 1925

8" -CI-2# 1925

8" -STL-2# 1968

8" -CI-2# 1925



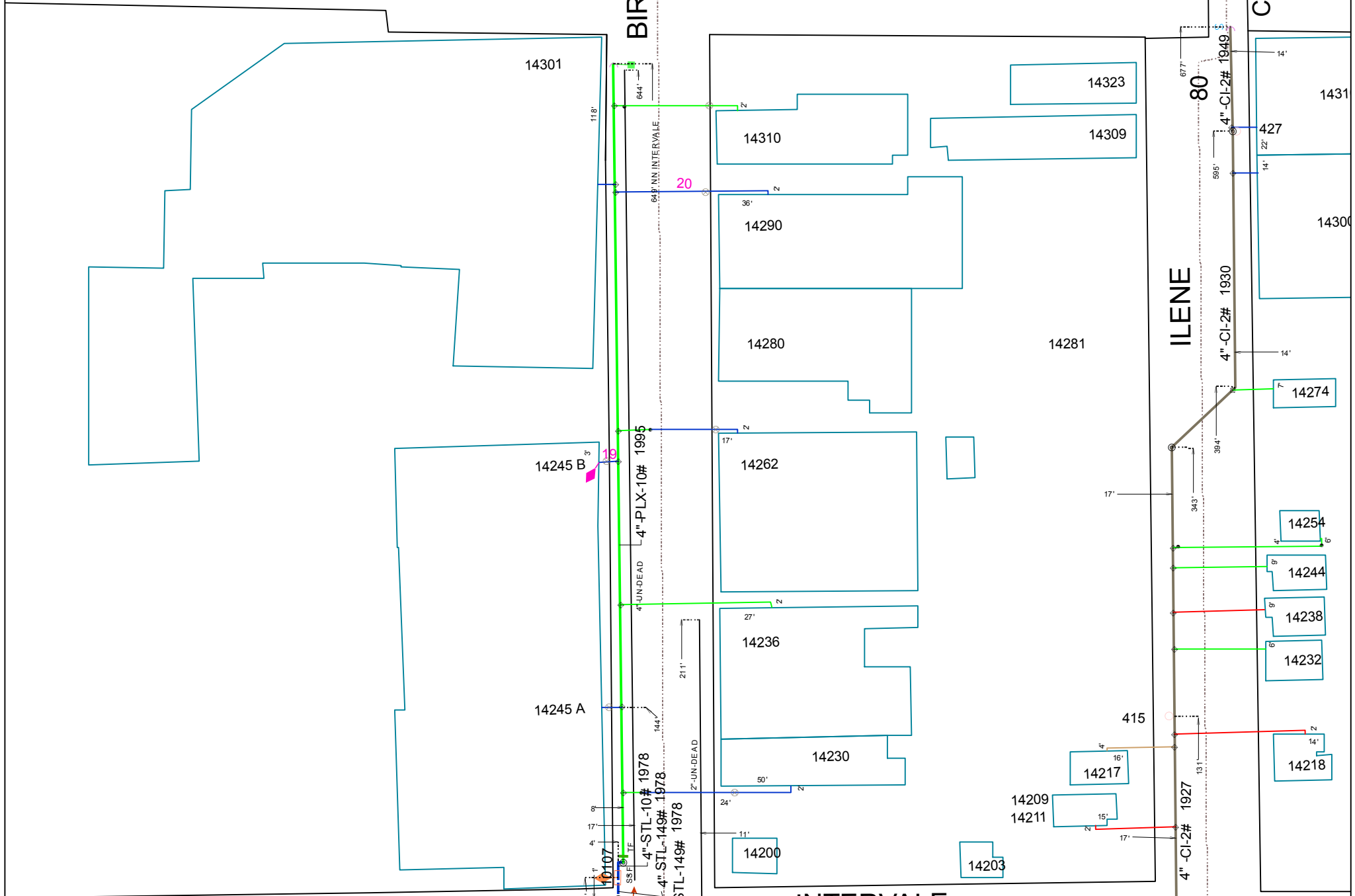
STATE LAW ACT 174
3 WORKING DAYS
BEFORE YOU DIG
DIAL TOLL FREE
1-800-482-7171
OR 811

GTW RR

BIRWOOD

CONRAIL RR

TEMP CLOSING

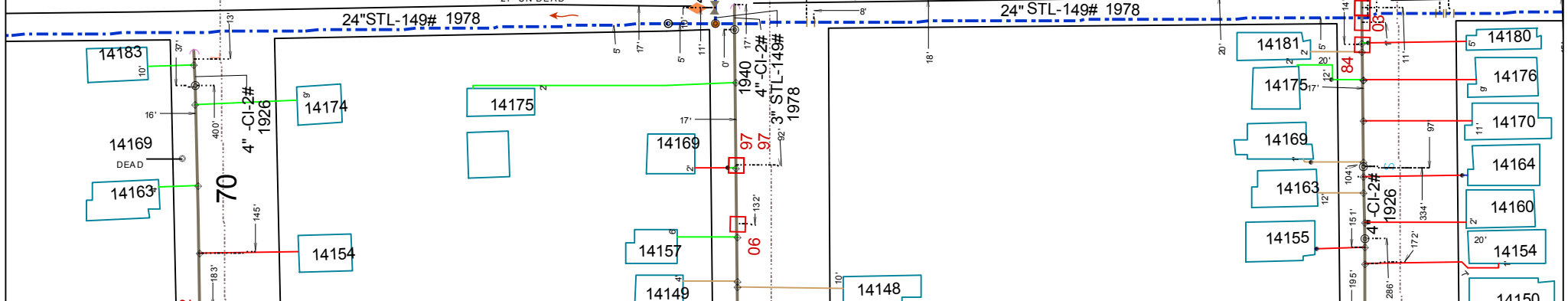


INTERVALE

60

24" STL-149# 1978

24" STL-149# 1978



70

4" -CI-2# 1926

4" -CI-2# 1940

3" STL-149# 1978

4" -CI-2# 1926

4" -CI-2# 1927

4" -CI-2# 1949

Gas GIS Legend

Service Symbols

- EndCap
- LoopedService
- Section
- EFV Relief Valve
- AbandonedService

Aban. Service pipe

NOTE: Service line style is the same as the main it is tied into

Customer Events

- Service Event
- CUTCAP (CCType, location)

AbandonedGasPipesSymbol

- Abandoned Gas Device
- End Cap
- Section Symbol

Gas Pipe Protection

- Casing
- Shield
- Sleeve

Land

- Bridge
- DrainCreek
- Easement
- Lotline
- RailRoad
- RightOfWay
- Tunnel
- Water
- Street Centerline
- Building
- Landmark
- BrownField
- Known Sites of Environmental Contamination DEQ Dec2008

CPAnode

- Single
- Multiple

CP Rectifier

- Rectifier

Test Point

- DOT
- Regular TW

Tracer Wire

- Tracer Wire

Gas Valve

- Main, Closed
- Main, Open
- Service, Closed
- Service, Open

Regulator Station

- District
- Secondary
- Service

Controllable Fitting

- PCF Pressure Control Fitting
- SSF Short Stop
- Stopple Fitting
- Distribution Tiein
- Subtransmission Tiein
- Transmission Tiein

NonControllableFitting

- Branch
- Cap
- Coupling
- Ell
- Insulated
- Reducer
- Section
- Tee
- Transition
- <all other values>

Material Type

- CU - Copper
- CI - Cast Iron
- PLA - Plastic
- STL - Bare Steel
- STL - Coated Steel
- PLA - Plastic, Joint Trench
- OTR - Other
- UN - Unknown
- WI - Wrought Iron
- <all other values>
- Inactive - all material types

Main Lines Styles

- In Design Main (Proposed)
- Distribution Main
- Distribution - Joint Trench
- Subtransmission Main
- Transmission
- Exposed Pipe (Coated Steel)
- Pipe Lining (CI or WI)
- AbandonedGasPipe

Other Symbols

- Drip
- Flow Arrow
- Foreign Utility Pipe
- Public Improvement
- Pressure Monitoring Device
- Leak Report - Leak Repair
- Automated Repairs
- LowPoint
- Summit

Scaled Areas

- 10
- 30
- 50 SCALE