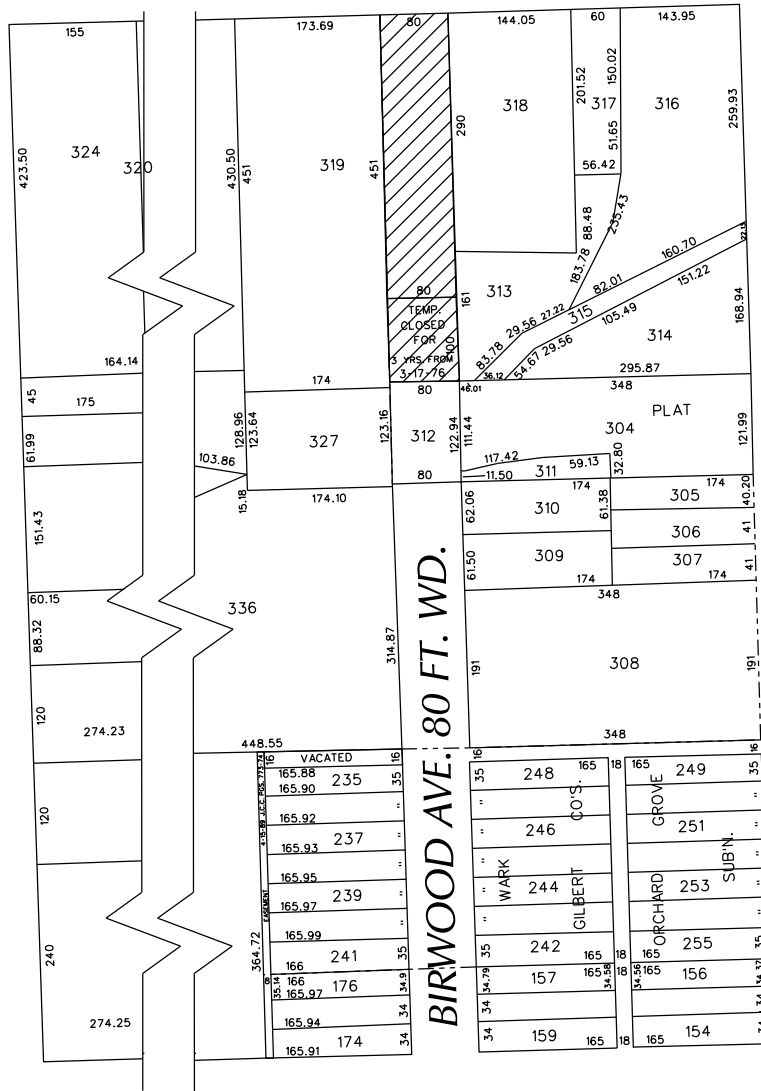


PETITION NO. 888
 BOBBY'S T.C.B. TOWING SERVICE
 10401 LYNDON AVE.
 DETROIT, MICHIGAN 48238
 C/O DENISE BOYCE-HARDISON
 PHONE NO. 313 933-9305



LYNDON AVE. 66 FT. WD.

MEYERS RD. 66 FT. WD.



ILENE AVE. 80 FT. WD.

INTERVALE AVE. 60 FT. WD.



- REQUESTED CONVERSION TO EASEMENT

(FOR OFFICE USE ONLY)

CARTO 9 D

B					
A					
DESCRIPTION	DRWN	CHKD	APPD	DATE	
REVISIONS					
DRAWN BY	WLW	CHECKED			
DATE	11-05-15	APPROVED			

REQUEST TO CONVERT TO EASEMENT
 A PORTION OF BIRWOOD AVE. 80 FT. WD.
 IN THE BLOCK BOUND BY
 LYNDON, ILENE, INTERVALE AVE.
 AND MEYERS RD.

CITY OF DETROIT CITY ENGINEERING DEPARTMENT SURVEY BUREAU	
JOB NO.	01-01
DRWG. NO.	X 888