

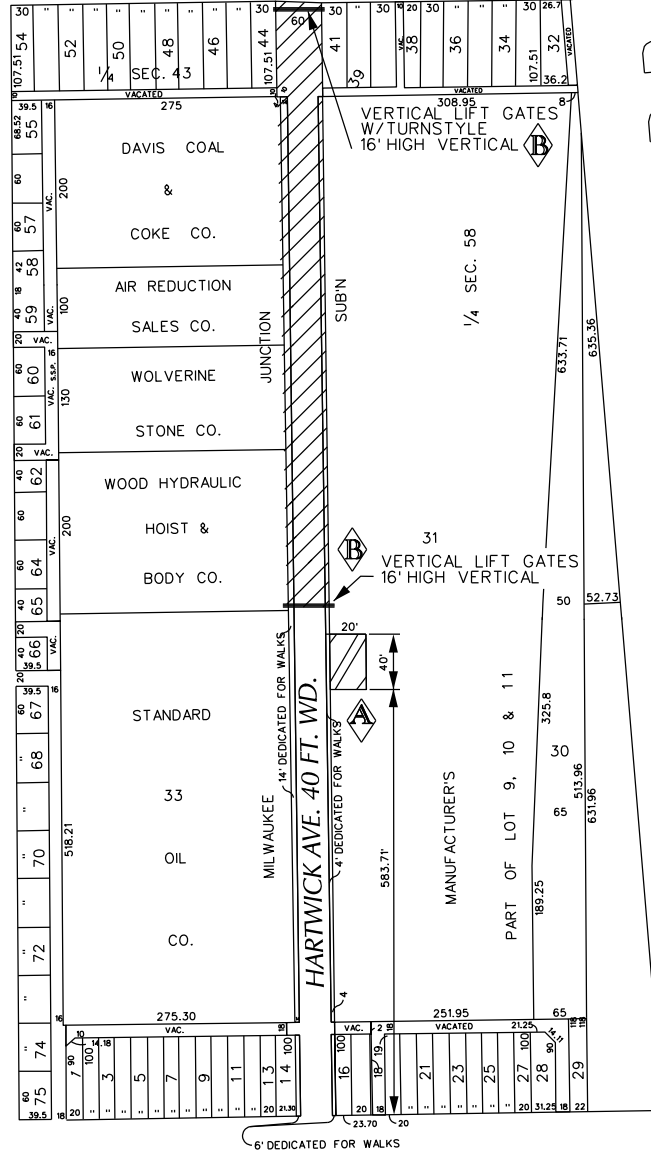
PETITION NO. 887
 EUCLID MANUFACTURING
 1500 EUCLID AVE.
 DETROIT, MICHIGAN 48211
 C/O DAWN DAYTON
 PHONE NO. 734 751-6300 EXT. 10274

"REVISED"



EUCLID AVE. 60 FT. WD.

RIOPELLE ST. 46 FT. WD.

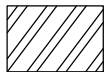


R.R.

TRUNK

GRAND

CLAY ST. 66 FT. WD.



- REQUESTED FOR DEDICATION



- REQUESTED CONVERSION TO EASEMENT

(FOR OFFICE USE ONLY)

CARTO 41 C

B	A PAIR OF VERTICAL LIFT GATES 16 FEET VERTICAL	WLW	KSM	KSM	10/18/16
A	20'x40' DEDICATED AREA FOR VEHICLE MANEUVERING	WLW	KSM	KSM	10/18/16
DESCRIPTION		DRWN	CHKD	APPD	DATE
REVISIONS					
DRAWN BY	WLW	CHECKED			
DATE	11-23-15	APPROVED			

REQUEST TO CONVERT TO EASEMENT
 A PORTION OF HARDWICK AVE.
 VARIOUS WIDTHS AND
 REQUEST FOR DEDICATION
 IN THE AREA BOUND BY
 CLAY, RIOPELLE ST., PHILADELPHIA AVE.
 AND GRAND TRUNK R.R.

CITY OF DETROIT CITY ENGINEERING DEPARTMENT SURVEY BUREAU	
JOB NO.	01-01
DRWG. NO.	X 887