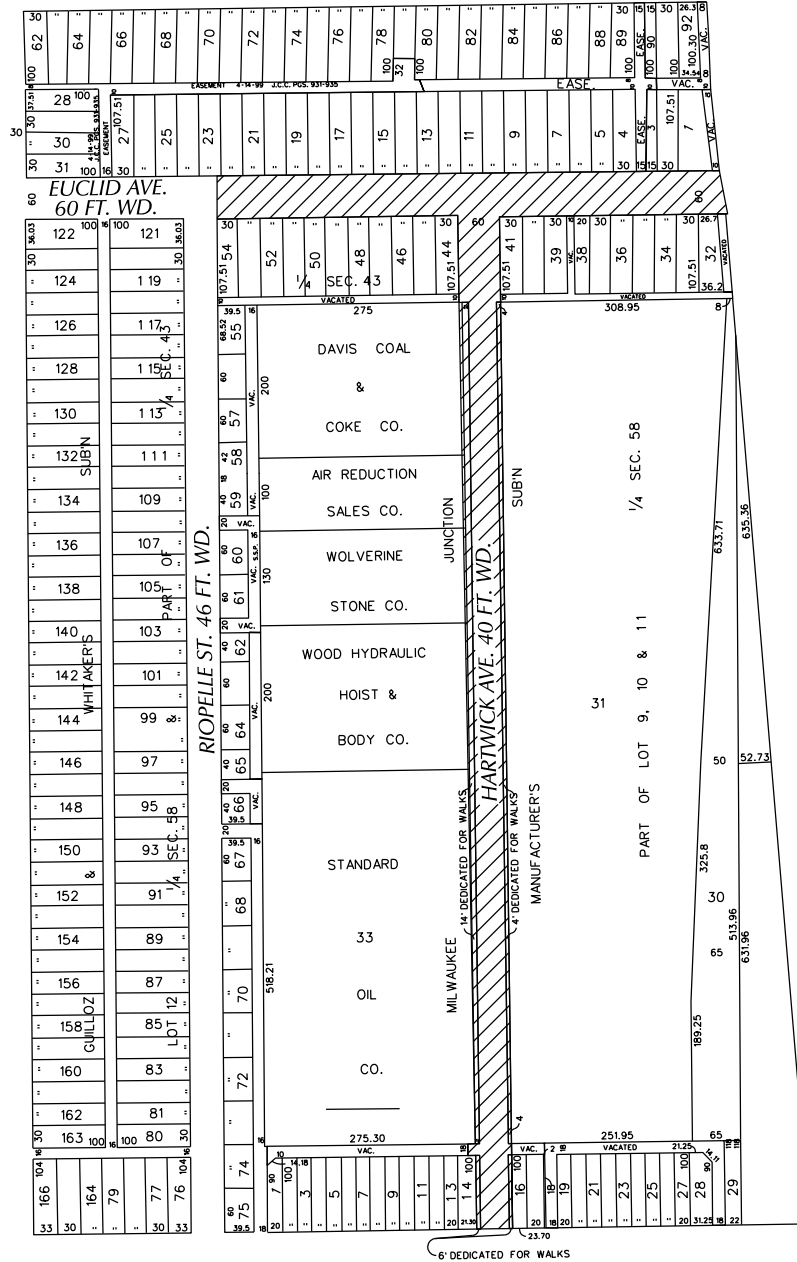


PETITION NO. 887  
 EUCLID MANUFACTURING  
 1500 EUCLID AVE.  
 DETROIT, MICHIGAN 48211  
 C/O DAWN DAYTON  
 PHONE NO. 734 751-6300 EXT. 10274



PHILADELPHIA AVE. 50 FT. WD.

WALTER P. CHRYSLER FREEWAY



R.R.  
 TRUNK  
 GRAND

CLAY ST. 66 FT. WD.



- REQUESTED CONVERSION TO EASEMENT

(FOR OFFICE USE ONLY)

CARTO 41 C

B					
A					
DESCRIPTION		DRWN	CHKD	APPD	DATE
REVISIONS					
DRAWN BY		CHECKED			
DATE		APPROVED			
11-23-15					

REQUEST TO CONVERT TO EASEMENT  
 A PORTION OF E. EUCLID AVE. 60 FT. WD.  
 HARDWICK AVE. 40 FT. WD. AND A PORTION  
 OF THE EAST/WEST PUBLIC ALLEY 18 FT. WD.  
 IN THE BLOCK BOUND BY  
 CLAY ST., WALTER P. CHRYSLER FWY., PHILADELPHIA AVE.  
 AND GRAND TRUNK R.R.

CITY OF DETROIT CITY ENGINEERING DEPARTMENT SURVEY BUREAU	
JOB NO.	01-01
DRWG. NO.	X 887