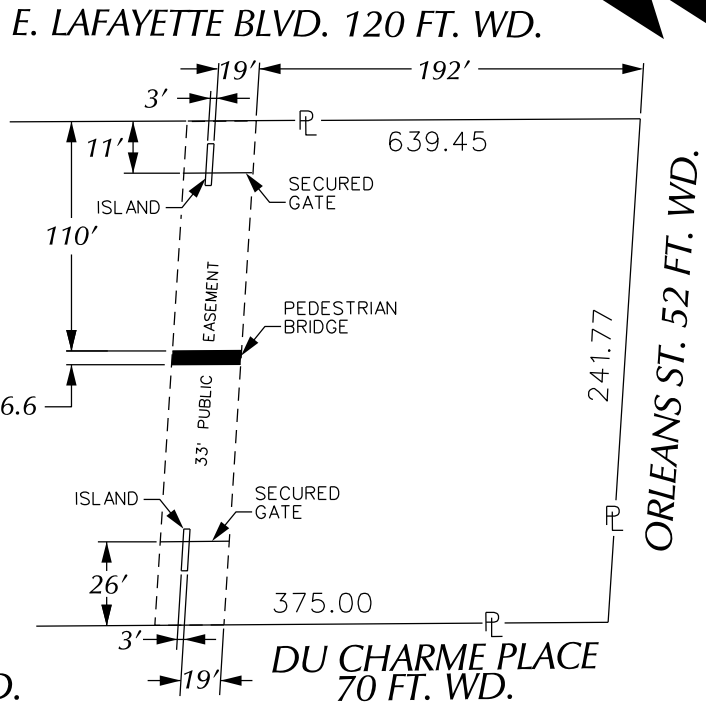
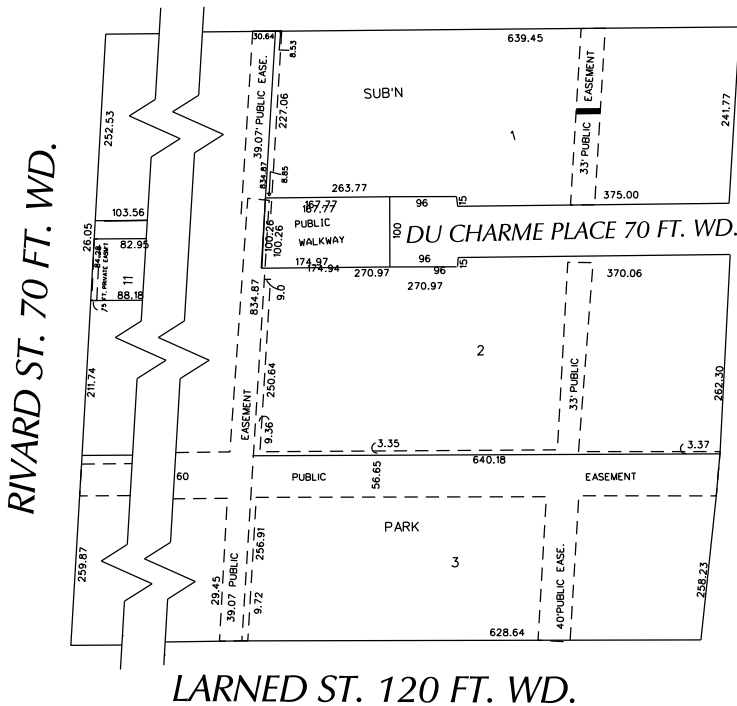


PETITION NO. 883  
 DUCHARME PLACE, LLC.  
 25925 TELEGRAPH RD. SUITE 202  
 SOUTHFIELD, MICHIGAN 48033  
 C/O WALTER COHEN  
 PHONE NO. 248 353-7981



E. LAFAYETTE BLVD. 120 FT. WD.



LARNED ST. 120 FT. WD.



- REQUEST ENCROACHMENT  
 (With Pedestrian Bridge  
 and Secured Gate)

(FOR OFFICE USE ONLY)

CARTO 38 C & D

B					
A					
DESCRIPTION		DRWN	CHKD	APPD	DATE
REVISIONS					
DRAWN BY		CHECKED			
DATE		APPROVED			
11-10-15					

REQUEST ENCROACHMENT  
 INTO PUBLIC EASEMENT 33 FT. WD.  
 AT 1544 - 1556 E. LAFAYETTE BLVD.  
 (With Pedestrian Bridge and Secured Gate)

CITY OF DETROIT CITY ENGINEERING DEPARTMENT SURVEY BUREAU	
JOB NO.	01-01
DRWG. NO.	X 883