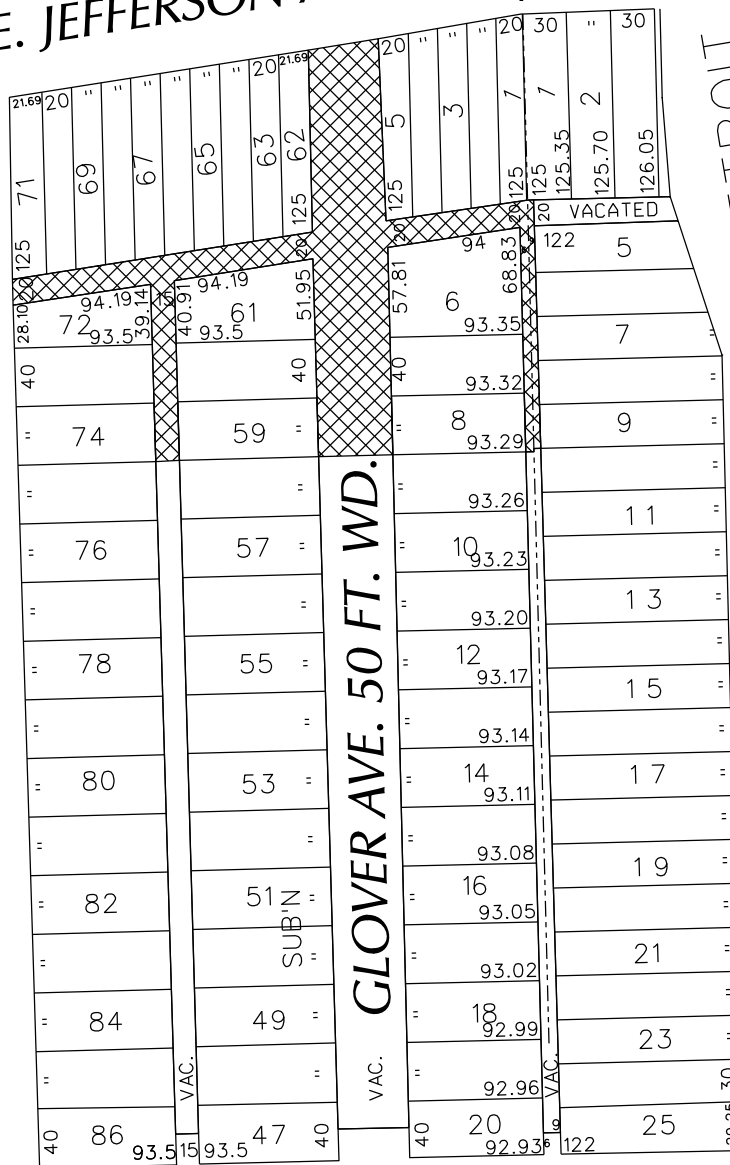


PETITION NO. 872
 DETROIT ARCHITECT
 13718 WOODWARD AVE., SUITE 200
 HIGHLAND PARK, MICHIGAN 48203
 C/O GLENN WASH
 PHONE NO. 313 838-0800



E. JEFFERSON AVE. 120 FT. WD.

ST. JEAN AVE. 66 FT. WD.



DETROIT
 TERMINAL
 RXR

HILGER AVE.
 60 FT. WD.

EDLIE ST. 50 FT. WD.



- OUTRIGHT VACATION

(FOR OFFICE USE ONLY)

CARTO 54 A

B					
A					
DESCRIPTION		DRWN	CHKD	APPD	DATE
REVISIONS					
DRAWN BY	WLW	CHECKED			
DATE	02-22-16	APPROVED			

REQUEST TO OUTRIGHT VACATE
 VARIOUS STREETS AND ALLEYS
 IN THE BLOCK BOUND BY
 ST. JEAN, E. JEFFERSON, HILGER AVE.
 DETROIT TERMINAL RXR
 AND EDLIE ST.

CITY OF DETROIT CITY ENGINEERING DEPARTMENT SURVEY BUREAU	
JOB NO.	01-01
DRWG. NO.	X 872