

City of Detroit
OFFICE OF THE CITY CLERK

Janice M. Winfrey
City Clerk

Vivian A. Hudson
Deputy City Clerk

DEPARTMENTAL REFERENCE COMMUNICATION

Tuesday, September 29, 2015

To: The Department or Commission Listed Below

From: Janice M. Winfrey, Detroit City Clerk

The following petition is herewith referred to you for report and recommendation to the City Council.

In accordance with that body's directive, kindly return the same with your report in duplicate within four (4) weeks.

DPW - CITY ENGINEERING DIVISION BOARD OF ZONING APPEALS
BUILDINGS SAFETY ENGINEERING

848 *Detroit Central City Community Mental Health, Inc., request to construct a decorative fence along the sidewalk in front of the building and parking lot.*



10 Peterboro Street
Detroit, MI 48201-2722

Main Number: (313) 831-3160
Main Fax: (313) 831-2604

DETROIT
CENTRAL CITY
COMMUNITY
MENTAL HEALTH, INC.

www.dcccmh.org

Irva Faber-Bermudez, MSN, PMHCNS-BC
President & CEO

September 22, 2015

The Honorable City Council
Attn: Office of the City Clerk
200 Coleman A Young Municipal Center
Detroit, MI 48226

To Whom it May Concern:

This petition request is being submitted on behalf of Charlotte Apartments LDHA, LP whose project, Charlotte Apartments is located at 644 Charlotte Ave in the Midtown area of Detroit, Michigan. We are in the final stages of a total renovation of this building, which when completed, will provide 27 one bedroom units that will be rented with an emphasis to supply housing for returning Veterans. Currently the building sits on a zero lot line. Our issue is that in order to provide security to the site we want to construct a decorative fence along the sidewalk in front of the building and parking lot. The area between the building and the decorative fence will be fully landscaped (please see attached). One of the owners of this project also owns the building next door whose address is 624 Charlotte Ave, which has the same situation. In order for the two sites to have similar street appearance, we are also requesting that this site be included in our request.

Please contact me at (313) 833-6275 if you need additional information.

Sincerely,

Irva Faber-Bermudez
President and CEO

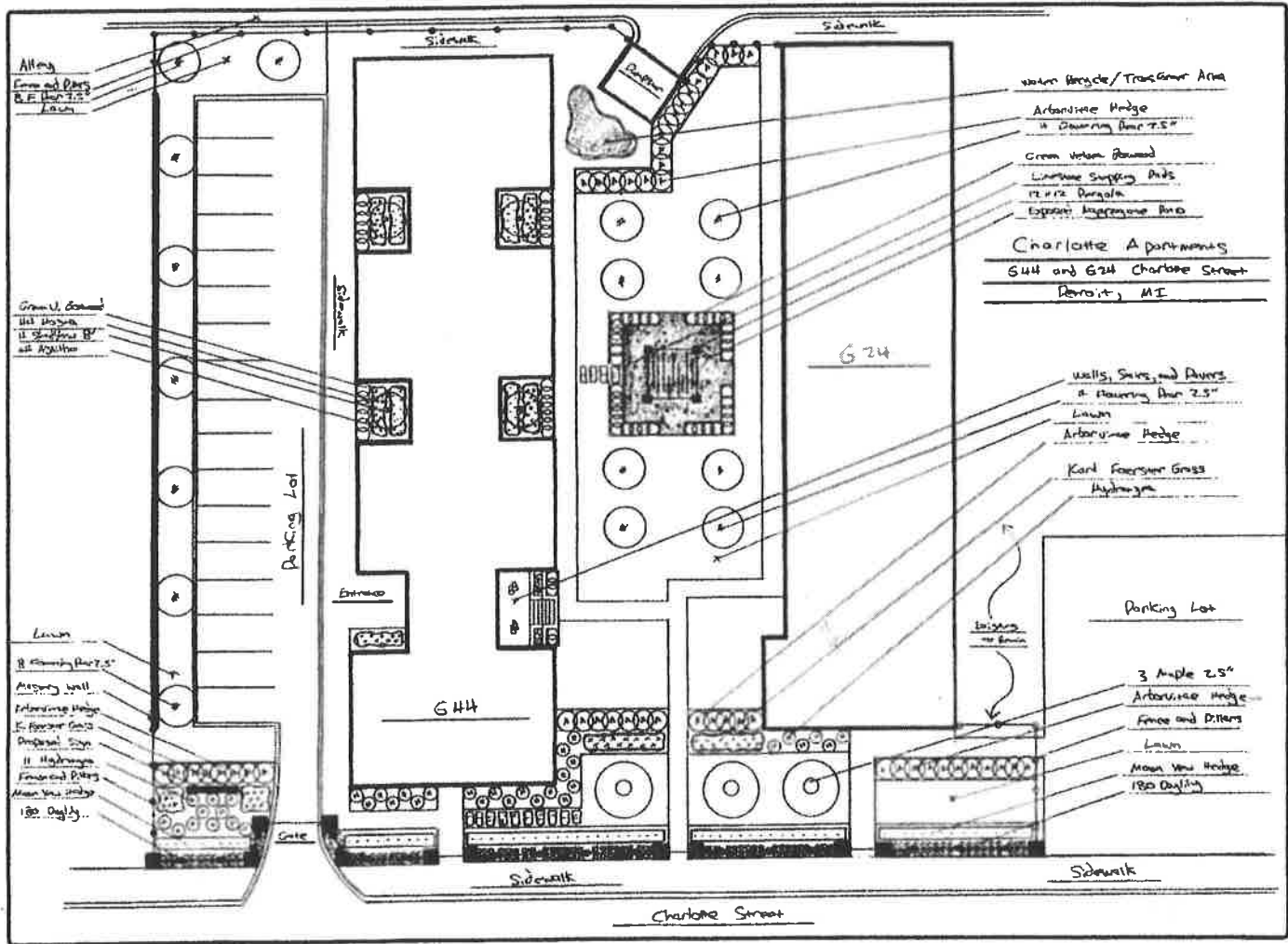
CITY CLERK 22 SEP 2015 PM2:14

Partially funded by Detroit-Wayne County
Community Mental Health Agency



Equal Housing Opportunity
Equal Opportunity Employer





REVISIONS	BY

3401 Old Glen Road, Suite 100, Charlotte, NC 28217
 Phone: 704.535.1500 Fax: 704.535.1501
 A Carolina Landscaping Company

Sinaori Landscaping
 Sinaori Landscaping

Project	Charlotte Apartments
Date	07-23-15
Scale	1/8" = 1'-0"
Drawn by	
Checked by	