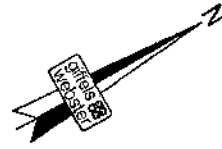
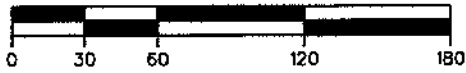


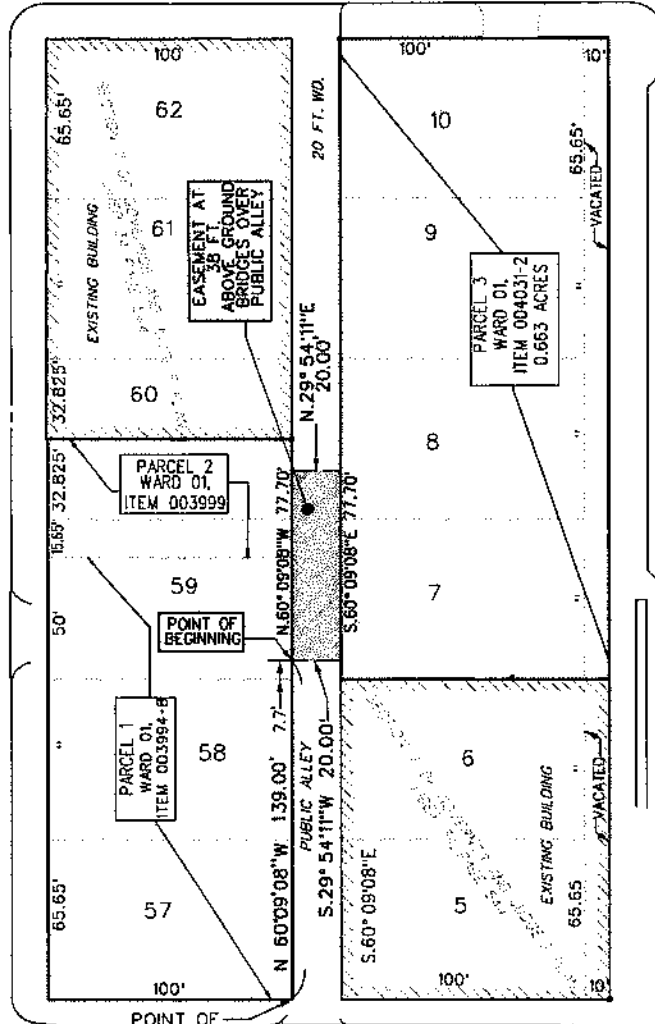
SCALE: 1"=60'



GRAND RIVER AVENUE (60 FT. WIDE)

LIBRARY AVENUE (71 FT WIDE)

BROADWAY AVENUE (100 FT WIDE)



GRATIOT AVENUE (60 FT. WIDE)

LEGEND

EASEMENT AREA FOR OVERHEAD BRIDGES

EASEMENT AT 38 FT. ABOVE GROUND
CITY OF DETROIT, WAYNE COUNTY, MICHIGAN



Engineers Surveyors
Planners
Landscape Architects
Environmental
Specialists
28 W. Adams Street
Suite 1200
Detroit, MI 48226
p (313) 962-4442
f (313) 962-5068
www.giffelswebster.com

DATE:	02/26/13	CHECKED BY:	JNR
DRAWN:	LDA	DATE:	2/13
DESIGN:			
SECTION:	7		
CITY:	DETROIT		

SCALE:	1"= 60'
SHEET:	1 OF 2
JOB No:	18233.13D
Copyright © 2013 Giffels Webster No reproduction shall be made without the prior written consent of Giffels Webster.	

H:\user\luc\AUTOCAD_TEMPLATES\New Log Template\18.5x14 New Logo.dwg