

DTE Energy - Gas Co.
Data Integrity and Technology
One Energy Plaza, GO-838
City of Detroit, MI 48226

October 5, 2015

Richard Doherty, CED DPW Head Engineer
City Engineering Division, DPW
2 Woodward Ave, Suite 642
Detroit, Michigan 48226-3462

RE: Petition #777

Dated: 9/9/2015

- Not involved. **See Remarks**
- Involved: but asking you to hold action on this petition until further notice.
- Involved but have no objection to the property change - - provided that an easement of the full width of the public right-of-way (street, alley or other public place) is reserved.
- Involved: the nature of our services, and the estimated costs of removing, rerouting or abandonment of such all gas mains and/or services

REMARKS:

Involved but have no objections to the property change, to Encroach into Harper at 8330 Harper Ave. (with Masonry Building Façade). Reason being is that, DTE Energy Gas Co. has existing gas main lines on Harper Ave (8"-PLA-2# 1997), (8"-STL-2# 1997), (8"-CI-2# 1928) & (6"-CI-10# 1928) in the proposed area of easements. Otherwise, contact DTE Energy Gas Company Public Improvement Department: Michael Fedele at 313-389-7211 (Supervisor) or Laura Forrester at 313-389-7261 (Gas Planner), for the estimated cost of our services in abandoning/removing/ and/or relocating/rerouting, including the survey, design and drawing of our utilities. See enclosed strip prints for your use and information regarding our gas main locations.

Please abide by Public Act 174, three (3) working days before you dig, dial toll free MISS DIG at: 1 – 800 – 482 – 7171.

DTE Energy Gas Leak Emergency Phone Number: 1- 800 – 947 – 5000.

Sincerely,

***RS* Russell E Thornton**

Drafter
Data Integrity and Technology

RET/
Enclosure

Gas GIS Legend

Service Symbols

- EndCap
- LoopedService
- Section
- Relief Valve
- AbandonedService

Aban. Service pipe

NOTE: Service line style is the same as the main it is tied into

Customer Events

- Service Event
- CUTCAP (CCType, location)

AbandonedGasPipesSymbol

- Abandoned Gas Device
- End Cap
- Section Symbol

Gas Pipe Protection

- Casing
- Shield
- Sleeve

Land

- Bridge
- DrainCreek
- Easement
- Lotline
- RailRoad
- RightOfWay
- Tunnel
- Water
- Street Centerline
- Building
- Landmark
- BrownField
- Known Sites of Environmental Contamination DEQ Dec2008

CPAnode

- Single
- Multiple

CP Rectifier

- Rectifier

Test Point

- DOT
- Regular TW

Tracer Wire

- Tracer Wire

Gas Valve

- Main, Closed
- Main, Open
- Service, Closed
- Service, Open

Regulator Station

- District
- Secondary
- Service

Controllable Fitting

- PCF Pressure Control Fitting
- SSF Short Stop
- Stopple Fitting
- Distribution Tiein
- Subtransmission Tiein
- Transmission Tiein
- Branch
- Cap
- Coupling
- Ell
- Insulated
- Reducer
- Section
- Tee
- Transition
- <all other values>

NonControllableFitting

- Branch
- Cap
- Coupling
- Ell
- Insulated
- Reducer
- Section
- Tee
- Transition
- <all other values>

Material Type

- CU - Copper
- CI - Cast Iron
- PLA - Plastic
- STL - Bare Steel
- STL - Coated Steel
- PLA - Plastic, Joint Trench
- OTR - Other
- UN - Unknown
- WI - Wrought Iron
- <all other values>
- Inactive - all material types

Main Lines Styles

- In Design Main (Proposed)
- Distribution Main
- Distribution - Joint Trench
- Subtransmission Main
- Transmission
- Exposed Pipe (Coated Steel)
- Pipe Lining (CI or WI)
- AbandonedGasPipe

Other Symbols

- Drip
- Flow Arrow
- Foreign Utility Pipe
- Public Improvement
- Pressure Monitoring Device
- Leak Report - Leak Repair
- Automated Repairs
- LowPoint
- Summit

Scaled Areas

- 10
- 30
- 50 SCALE



22'

8403

HARPER

4"-CI-DEAD

86'

274' 27"

113'
UN-DEAD

128'

CI-2#
16

14
11

8"-UN-DEAD

8"-UN-DEAD

14

4"-CI-2# 1917

8"-CI-10# 1916

8"-CI-2# 1916

8"-CI-2# 1916

8"-CI-2# 1928

443164

8"-PLA-2# 1997

20062213

8"-STL-2# 1997

20062215

8"-STL-2# 1997

20062212

8"-PLA-10# 1997

20062216

14

14

14

14

30 SCALE

4"-CI-2# 1912

10862

2'

33'

40'

8330

6489

6483

31'

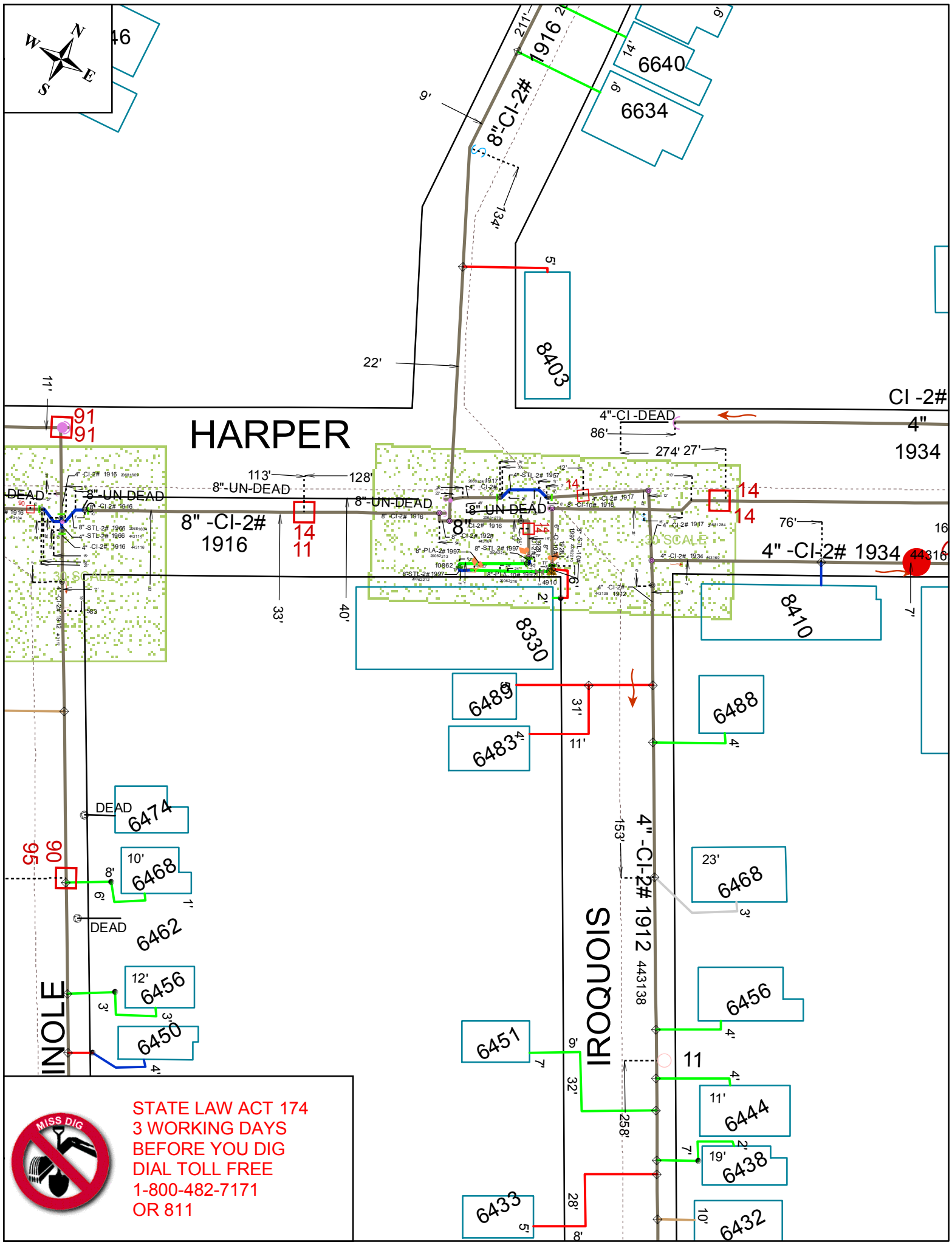
11'

SIROQOI 4"

153'



STATE LAW ACT 174
3 WORKING DAYS
BEFORE YOU DIG
DIAL TOLL FREE
1-800-482-7171
OR 811



HARPER

IROQUOI

91
91

14
11

14
14

95
90

STATE LAW ACT 174
3 WORKING DAYS
BEFORE YOU DIG
DIAL TOLL FREE
1-800-482-7171
OR 811

