

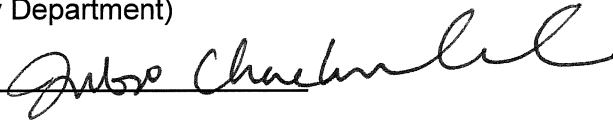
TO: City Engineering Division, DPW
2 Woodward Ave., Suite 642
Detroit, MI 48226-3462
Survey Bureau: 313-224-3970

Ref. No. 201511018
Petition No. 773

The proposed change in property (referred to above) would affect our services as follows:

- Not Involved.
- Involved; but asking you to hold action on this petition until further notice.
- Involved; the nature of our services, and the estimated costs of removing and/or rerouting such services are:
- Involved; have no objection to the request to outright vacate a portion of Caroline and Lysander St., 50 ft wide, Vermont St 70 ft. wide, Wabash St. 65 ft. wide, various public alleys 20 ft wide in the blocks bound by Canfield, Grand River, W. Forest Ave. and Rosa Parks Blvd. as shown on drawing no. x773 dated 8/12/2015 provided that 100% signatures of abutting property owners are secured.

Traffic Engineering Division - DPW
(Utility or City Department)

for Ashok Patel 
By

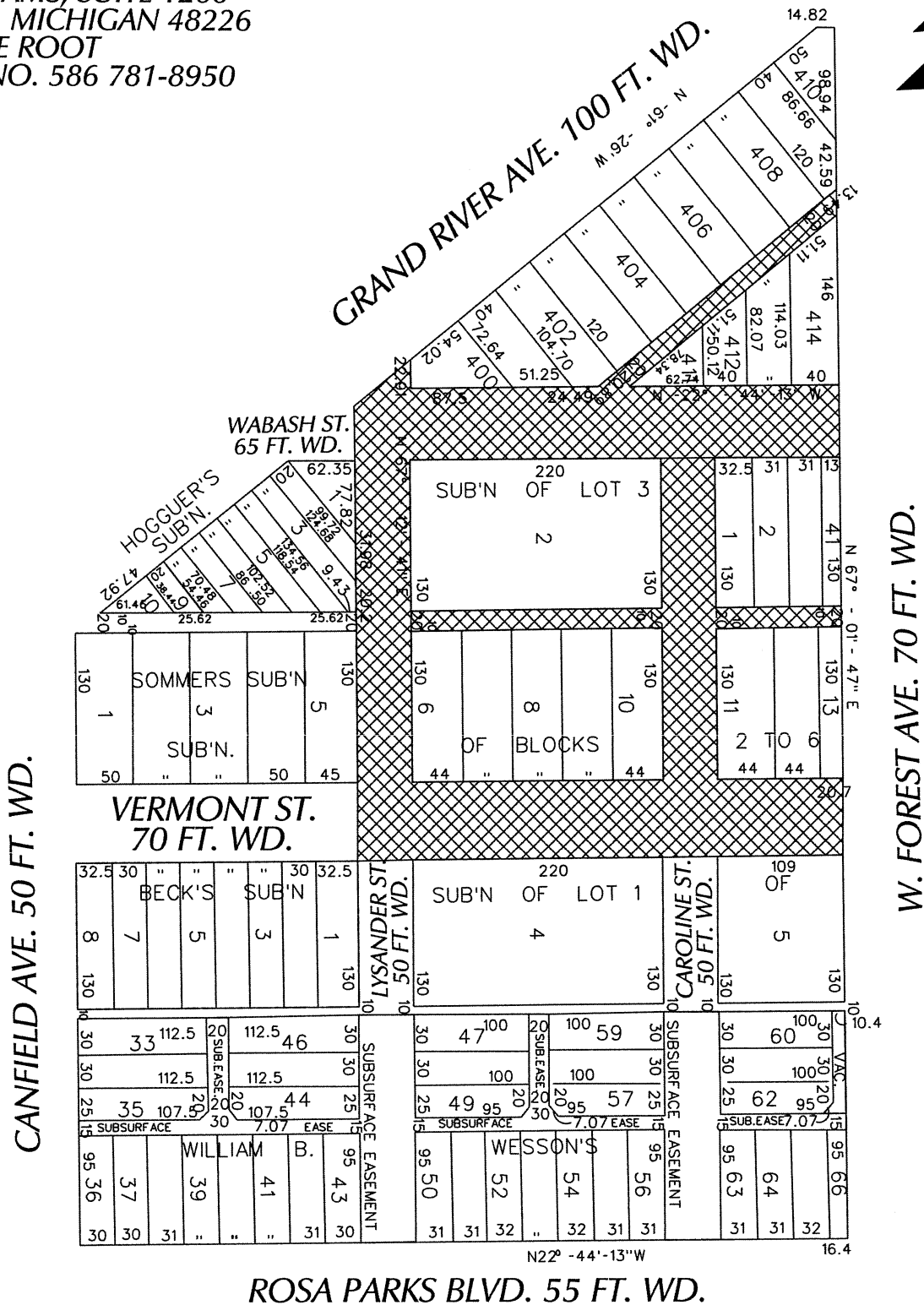
Head Transportation Engineer
Title

November 17, 2015
Date

313 224-1610
Area code-Telephone number

MA/ma

PETITION NO. 773
 GIFFELS WEBSTER
 C/O MICHIGAN VETERAN'S FOUNDATION
 28 W. ADAMS, SUITE 1200
 DETROIT, MICHIGAN 48226
 C/O DAVE ROOT
 PHONE NO. 586 781-8950



- OUTRIGHT VACATION

(FOR OFFICE USE ONLY)

CARTO 20 F

B					
A					
DESCRIPTION	DRWN	CHKD	APPD	DATE	
REVISIONS					
DRAWN BY	CHECKED				
DATE	APPROVED				
08-12-15	WLW				

REQUEST TO OUTRIGHT VACATE
 A PORTION OF CAROLINE AND LYSANDER ST., 50 FT. WD.
 VERMONT ST. 70 FT. WD., WABASH ST., 65 FT. WD.
 VARIOUS PUBLIC ALLEYS, 20 FT. WD.
 IN THE BLOCKS BOUND BY
 CANFIELD, GD. RIVER, W. FOREST AVE.
 AND ROSA PARKS BLVD.

CITY OF DETROIT	
CITY ENGINEERING DEPARTMENT	
SURVEY BUREAU	
JOB NO.	01-01
DRWG. NO.	X 773

