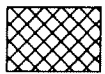
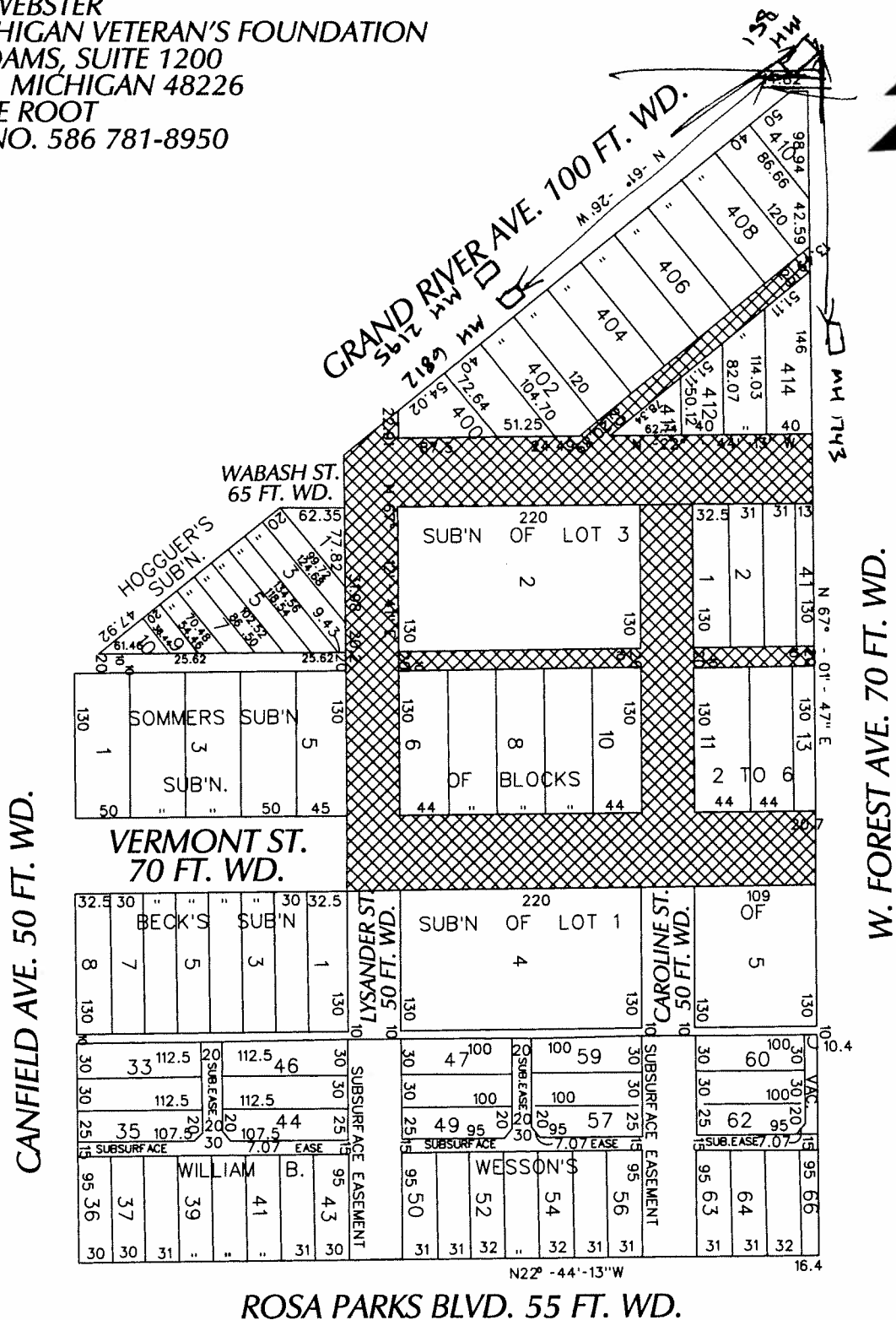


PETITION NO. 773
 GIFFELS WEBSTER
 C/O MICHIGAN VETERAN'S FOUNDATION
 28 W. ADAMS, SUITE 1200
 DETROIT, MICHIGAN 48226
 C/O DAVE ROOT
 PHONE NO. 586 781-8950



- OUTRIGHT VACATION

ROSA PARKS BLVD. 55 FT. WD.

(FOR OFFICE USE ONLY)

CARTO 20 F

B					
A					
DESCRIPTION	DRWN	CHKD	APPD	DATE	
REVISIONS					
DRAWN BY	CHECKED				
DATE	APPROVED				
08-12-15					

REQUEST TO OUTRIGHT VACATE
 A PORTION OF CAROLINE AND LYSANDER ST., 50 FT. WD.
 VERMONT ST. 70 FT. WD., WABASH ST., 65 FT. WD.
 VARIOUS PUBLIC ALLEYS, 20 FT. WD.
 IN THE BLOCKS BOUND BY
 CANFIELD, GD. RIVER, W. FOREST AVE.
 AND ROSA PARKS BLVD.

CITY OF DETROIT	
CITY ENGINEERING DEPARTMENT	
SURVEY BUREAU	
JOB NO.	01-01
DRWG. NO.	X 773

City of Detroit
City Engineering Division, Department of Public Works
Survey Bureau

4th Notice 11/12/15
3rd Notice 10/14/15
2nd Notice 9/15/15

NOTICE OF PROPOSED CHANGE IN PROPERTY

Date: 08/13/2015

Petition: x773

- | | |
|--|---|
| <input checked="" type="checkbox"/> AT&T Telecommunication | <input type="checkbox"/> Berm Use |
| <input type="checkbox"/> Comcast Television (CATV) | <input type="checkbox"/> Conversion to Easement |
| <input type="checkbox"/> Detroit Edison (DTE) | <input type="checkbox"/> Dedication |
| <input type="checkbox"/> Fire Department | <input type="checkbox"/> Encroachment |
| <input type="checkbox"/> Michcon (DTE) | <input type="checkbox"/> Temporary Closing |
| <input type="checkbox"/> Planning & Development Department | <input checked="" type="checkbox"/> Vacation |
| <input type="checkbox"/> Public Lighting Authority | |
| <input type="checkbox"/> Public Lighting Department | |
| <input type="checkbox"/> Police Department | |
| <input type="checkbox"/> Recreation Department | |
| <input type="checkbox"/> Solid Waste Division, DPW | |
| <input type="checkbox"/> Street Design Bureau, DPW | |
| <input type="checkbox"/> Street Maintenance Division, DPW | |
| <input type="checkbox"/> Traffic Engineering Division, DPW | |
| <input type="checkbox"/> Water and Sewerage Department | |
| <input type="checkbox"/> _____ | |

A petition drawing is attached. Property shown on the attached print is proposed to be changed as indicated. Kindly report (using the back of this sheet) the nature of your services, if any affected by the proposed change and the estimated costs of removing and rerouting such services (if necessary).

Please return one copy to City Engineering Division, DPW within two weeks of the submittal date. Retain one copy and print for you file.

Ron Brundidge, Director, Department of Public Works

By: Richard Doherty, CED DPW
City Engineer

TO: City Engineering Division, DPW
2 Woodward Ave., Suite 642
Detroit, Michigan 48226-3462
Survey Bureau: 313-224-3970

Petition: x773

The proposed change in property (referred to on the other side of this sheet) would affect our services as follows:

- Not Involved
- Involved; but asking you to hold action on this petition until further notice.
- Involved; but no objections to the property change.
- Involved; but no objections to the property change...provided as easement of the full width of the public right-of-way (street, alley or other public place) is reserved. *AT&T HAS 4 MANHOLES ON THE CORNER OF GRAND RIVER/14th FOREST. THE APPX. LOCATION IS DEPICTED IN THE ATTACHED DRAWINGS AND DO NOT LOOK TO BE IMPACTED BY YOUR PLANNED USE.*
- Involved; the nature of our services and the estimated costs of removing and/or rerouting such services are:

AT&T
(Utility or City Department)

JOSEPH PALETTA *JP* JP875R
By

OSP Engineer
Title

11-17-15
Date

(313) 510-7734
Area code - Telephone number

Professional Engineer
 License No. 100000000
 State of New York
 100000000
 100000000

DATE	10/1/10
PROJECT	SEWER MAINS
CLIENT	...
...	...

SEWER MAINS (CONTINUED)



...	...
...	...

NOTES - ALSO REFER TO SHEETS 6812 AND 6813 FOR THE SEWER MAINS AND THE PROPOSED GARAGE.

UTILITY PLAN

INDICATES THE LOCATION OF THE SEWER MAINS AND THE PROPOSED GARAGE.

DATE: 10/1/10
 DRAWN BY: ...
 CHECKED BY: ...

SCALE: AS SHOWN

PROJECT NO. 100000000



LOCATION MAP

SEWER MAINS (CONTINUED)

The sewer mains are shown in dashed lines and are to be installed in accordance with the specifications of the Department of Environmental Conservation. The proposed garage is shown in solid lines and is to be constructed in accordance with the specifications of the Department of Environmental Conservation.

SEWER MAINS (CONTINUED)

The sewer mains are shown in dashed lines and are to be installed in accordance with the specifications of the Department of Environmental Conservation. The proposed garage is shown in solid lines and is to be constructed in accordance with the specifications of the Department of Environmental Conservation.

SEWER MAINS (CONTINUED)

The sewer mains are shown in dashed lines and are to be installed in accordance with the specifications of the Department of Environmental Conservation. The proposed garage is shown in solid lines and is to be constructed in accordance with the specifications of the Department of Environmental Conservation.

SEWER MAINS (CONTINUED)

The sewer mains are shown in dashed lines and are to be installed in accordance with the specifications of the Department of Environmental Conservation. The proposed garage is shown in solid lines and is to be constructed in accordance with the specifications of the Department of Environmental Conservation.

SEWER MAINS (CONTINUED)

The sewer mains are shown in dashed lines and are to be installed in accordance with the specifications of the Department of Environmental Conservation. The proposed garage is shown in solid lines and is to be constructed in accordance with the specifications of the Department of Environmental Conservation.

SEWER MAINS (CONTINUED)

The sewer mains are shown in dashed lines and are to be installed in accordance with the specifications of the Department of Environmental Conservation. The proposed garage is shown in solid lines and is to be constructed in accordance with the specifications of the Department of Environmental Conservation.

SEWER MAINS (CONTINUED)

The sewer mains are shown in dashed lines and are to be installed in accordance with the specifications of the Department of Environmental Conservation. The proposed garage is shown in solid lines and is to be constructed in accordance with the specifications of the Department of Environmental Conservation.

SEWER MAINS (CONTINUED)

The sewer mains are shown in dashed lines and are to be installed in accordance with the specifications of the Department of Environmental Conservation. The proposed garage is shown in solid lines and is to be constructed in accordance with the specifications of the Department of Environmental Conservation.

SEWER MAINS (CONTINUED)

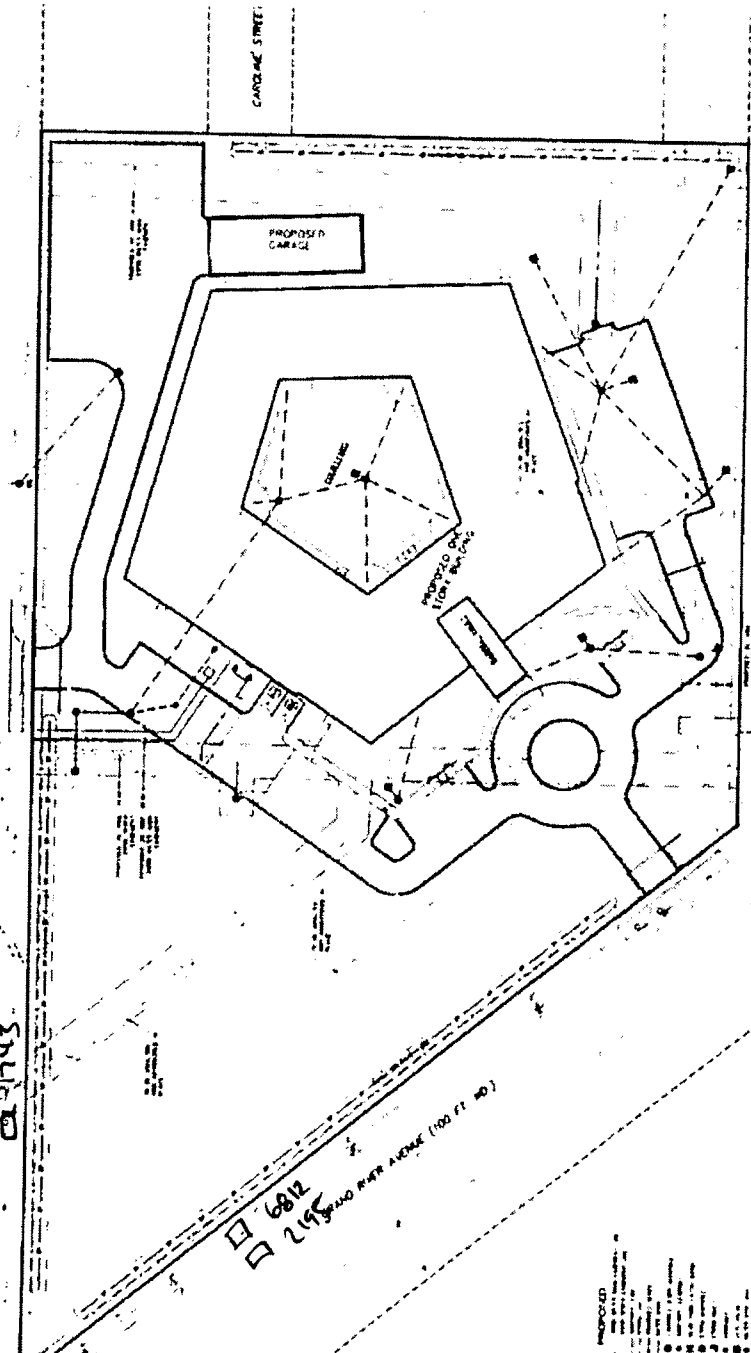
The sewer mains are shown in dashed lines and are to be installed in accordance with the specifications of the Department of Environmental Conservation. The proposed garage is shown in solid lines and is to be constructed in accordance with the specifications of the Department of Environmental Conservation.

SEWER MAINS (CONTINUED)

The sewer mains are shown in dashed lines and are to be installed in accordance with the specifications of the Department of Environmental Conservation. The proposed garage is shown in solid lines and is to be constructed in accordance with the specifications of the Department of Environmental Conservation.

SEWER MAINS (CONTINUED)

The sewer mains are shown in dashed lines and are to be installed in accordance with the specifications of the Department of Environmental Conservation. The proposed garage is shown in solid lines and is to be constructed in accordance with the specifications of the Department of Environmental Conservation.



SEWER MAINS (CONTINUED)

SEWER MAINS (CONTINUED)

SEWER MAINS (CONTINUED)

SEWER MAINS (CONTINUED)

SEWER MAINS (CONTINUED)

SEWER MAINS (CONTINUED)

SEWER MAINS (CONTINUED)

SEWER MAINS (CONTINUED)

SEWER MAINS (CONTINUED)

SEWER MAINS (CONTINUED)

SEWER MAINS (CONTINUED)

SEWER MAINS (CONTINUED)

SEWER MAINS (CONTINUED)

SEWER MAINS (CONTINUED)

SEWER MAINS (CONTINUED)

SEWER MAINS (CONTINUED)

SEWER MAINS (CONTINUED)

SEWER MAINS (CONTINUED)

SEWER MAINS (CONTINUED)

SEWER MAINS (CONTINUED)

SEWER MAINS (CONTINUED)

SEWER MAINS (CONTINUED)

SEWER MAINS (CONTINUED)

SEWER MAINS (CONTINUED)

SEWER MAINS (CONTINUED)

SEWER MAINS (CONTINUED)

SEWER MAINS (CONTINUED)

SEWER MAINS (CONTINUED)