

LOCATION MAP  
( NOT TO SCALE )

Executive:	S.T.C.
Manager:	M.W.M.
Designer:	A.G.N.
Quality Control:	S.T.C.
Section:	

Professional Seal

DATE	ISSUE

Developed For:  
**MiG Construction**  
422 West Congress  
Suite 400  
Detroit, MI 48226  
313.964.3155 P  
313.964.3264 F

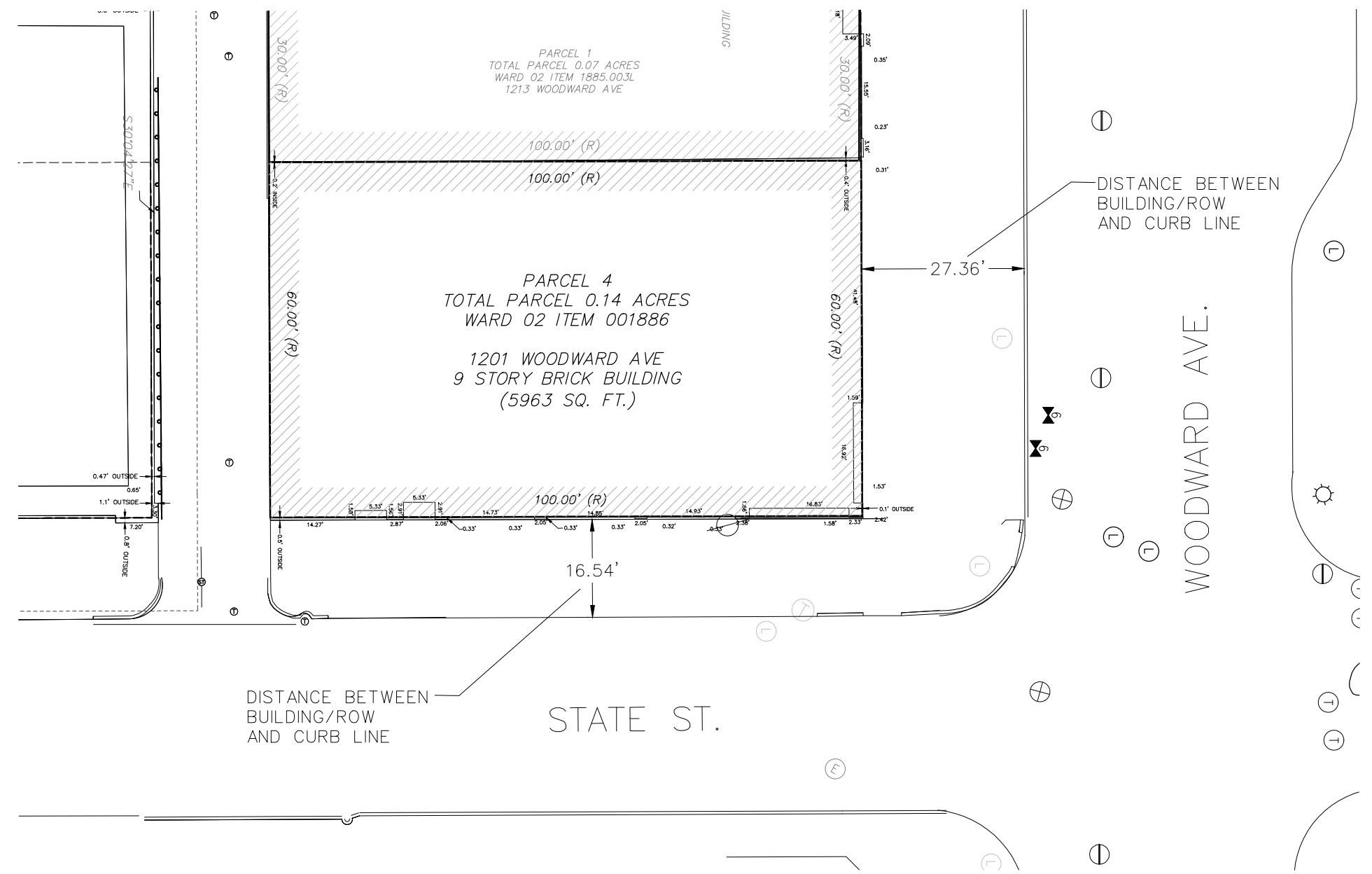
**SITE PLAN**

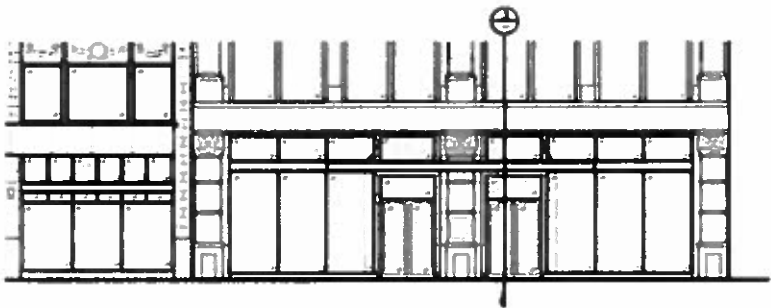
1201 WOODWARD

CITY OF DETROIT  
WAYNE COUNTY  
MICHIGAN

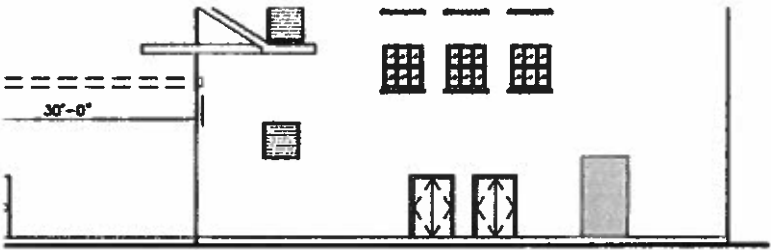
Date:	07.22.2014
Scale:	NTS
Sheet:	CS
Project:	16476-00D

Copyright © 2014 Giffels Webster.  
No reproduction or use in any form without the prior written consent of Giffels Webster.





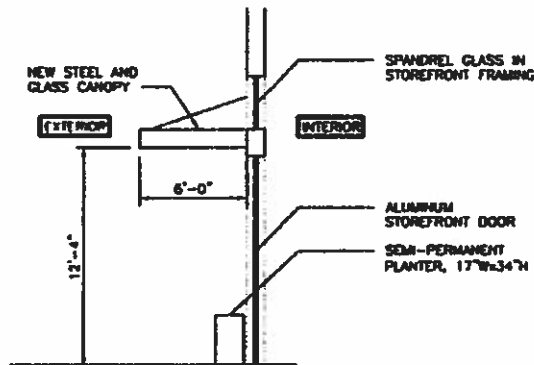
1 WOODWARD AVE ELEVATION  
SCALE: 1/16"=1'-0"



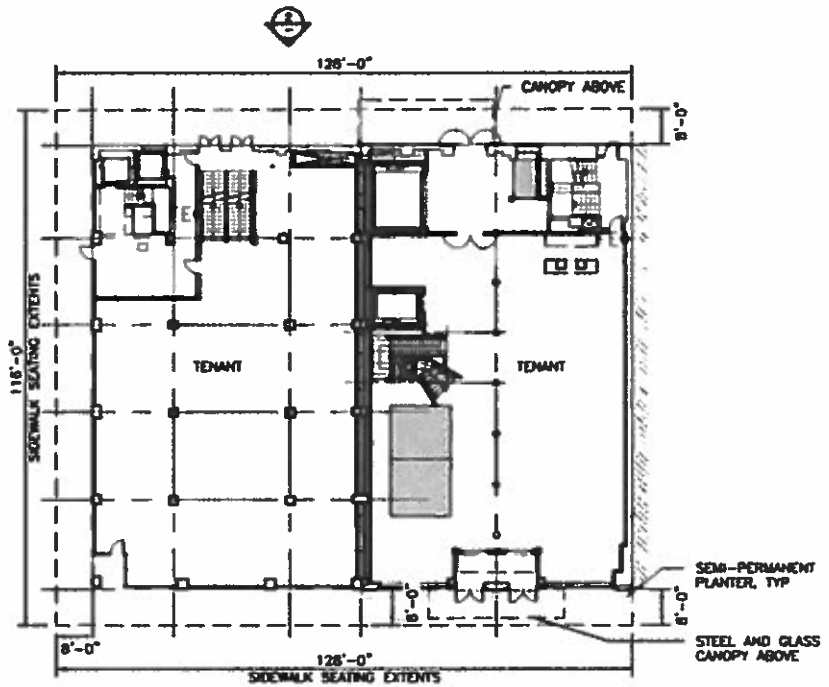
2 ALLEY ELEVATION  
SCALE: 1/16"=1'-0"



ROUGH ALLEY



3 SECTION THROUGH STOREFRONT  
SCALE: 1/8"=1'-0"



1 FIRST FLOOR PLAN  
SCALE: 1/32"=1'-0"



PROJECT NORTH

