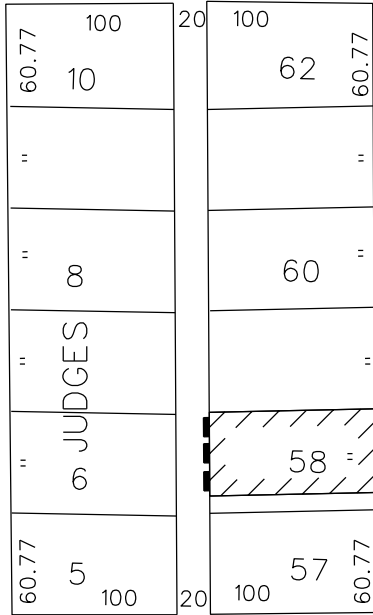


PETITION NO. 718
 BEDROCK REAL ESTATE SERVICES
 1092 WOODWARD AVE.
 DETROIT, MICHIGAN 48226
 C/O SCOTT R. COLLINS
 PHONE NO. 313 373-8700

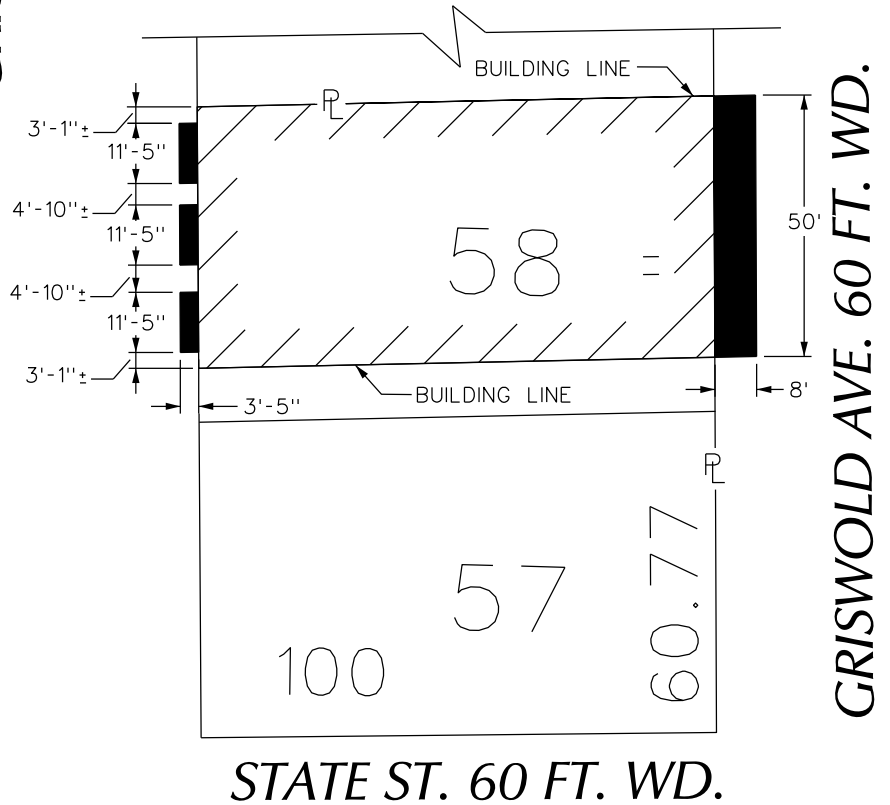



WASHINGTON BLVD. 195 FT. WD.
 GD. RIVER AVE. 60 FT. WD.



GRISWOLD AVE. 60 FT. WD.

STATE ST. 60 FT. WD.



 - REQUEST ENCROACHMENT
 (With Permanent Outdoor Seating,
 Balconies and Fire Escapes)

STATE ST. 60 FT. WD.

(FOR OFFICE USE ONLY)

CARTO 28 B

B					
A					
DESCRIPTION	DRWN	CHKD	APPD	DATE	
REVISIONS					
DRAWN BY	WLW	CHECKED			
DATE	07-01-15	APPROVED			

REQUEST ENCROACHMENT
 INTO GRISWOLD AVE. AT 1215 GRISWOLD AVE.
 (With Permanent Outdoor Seating)
 AND A PORTION OF THE NORTH/SOUTH PUBLIC ALLEY
 (With Balconies and Fire Escapes)
 BETWEEN GD. RIVER AVE. AND STATE ST.

CITY OF DETROIT CITY ENGINEERING DEPARTMENT SURVEY BUREAU	
JOB NO.	01-01
DRWG. NO.	X 718