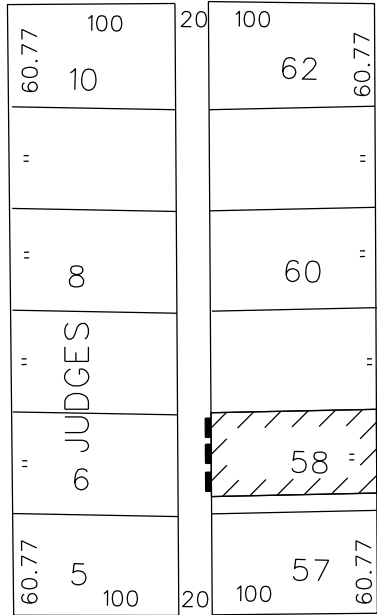


PETITION NO. 718
 BEDROCK REAL ESTATE SERVICES
 1092 WOODWARD AVE.
 DETROIT, MICHIGAN 48226
 C/O SCOTT R. COLLINS
 PHONE NO. 313 373-8700



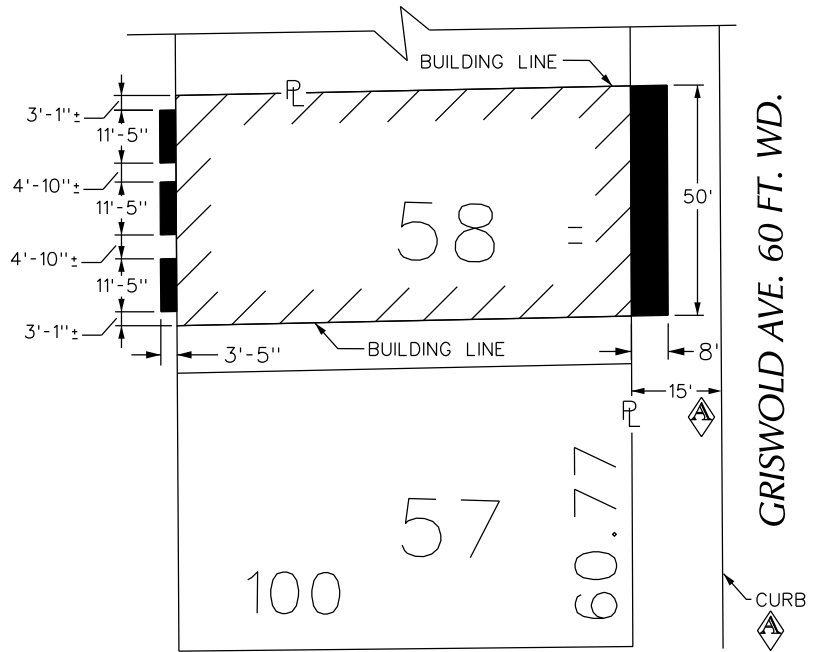
WASHINGTON BLVD. 195 FT. WD. GD. RIVER AVE. 60 FT. WD.



GRISWOLD AVE. 60 FT. WD.

"REVISED"

STATE ST. 60 FT. WD.



STATE ST. 60 FT. WD.

■ - REQUEST ENCROACHMENT
 (With Permanent Outdoor Seating,
 Balconies and Fire Escapes)

(FOR OFFICE USE ONLY)

CARTO 28 B

B					
A	REVISED: ADDING A CURB AND THE SIDEWALK DEPTH IS 15 FT.	WLW	KSM	KSM	8/10/15
DESCRIPTION		DRWN	CHKD	APPD	DATE
REVISIONS					
DRAWN BY	WLW	CHECKED			
DATE	07-01-15	APPROVED			

REQUEST ENCROACHMENT
 INTO GRISWOLD AVE. AT 1215 GRISWOLD AVE.
 (With Permanent Outdoor Seating)
 AND A PORTION OF THE NORTH/SOUTH PUBLIC ALLEY
 (With Balconies and Fire Escapes)
 BETWEEN GD. RIVER AVE. AND STATE ST.

CITY OF DETROIT	
CITY ENGINEERING DEPARTMENT	
SURVEY BUREAU	
JOB NO.	01-01
DRWG. NO.	X 718