

FAX TRANSMITTAL

Office of the City Clerk

Coleman A Young Municipal Center
Two Woodward Avenue, Suite 200
Detroit, Michigan 48226
Telephone: (313) 224-2070 Fax: (313) 224-2075

Friday, May 29, 2015

No. of Pages **6**

FROM: *Mr. Andre Gilbert II, Junior Assistant City Council Committee Clerk*

SUBJECT: *Petition #709, Republic Tavern & New GAR, LLC, request to place a
garbage bin/flower planter on the sidewalk of the GAR Building on Cass
Ave.*

FAX TO THE FOLLOWING DEPARTMENT(S):

..... Mr. Richard Doherty, City Engineer	DPW - City Engineering Division	(313) 224-1464
..... Mr. Maurice Cox, Director	Planning and Development Department	(313) 224-1629

Attachment

City of Detroit
OFFICE OF THE CITY CLERK

Janice M. Winfrey
City Clerk

Robin R. Underwood, CMC
Deputy City Clerk

DEPARTMENTAL REFERENCE COMMUNICATION

Friday, May 29, 2015

To: The Department or Commission Listed Below

From: Janice M. Winfrey, Detroit City Clerk

The following petition is herewith referred to you for report and recommendation to the City Council.

In accordance with that body's directive, kindly return the same with your report in duplicate within four (4) weeks.

DPW - CITY ENGINEERING DIVISION PLANNING AND DEVELOPMENT DEPARTMENT

709 *Republic Tavern & New GAR, LLC, request to place a garbage bin/flower planter on the sidewalk of the GAR Building on Cass Ave.*

709

DETROIT
CITY CLERK

2015 MAY 26 P 3:08

May 22, 2015

Detroit City Council
c/o City Clerk
Coleman A. Young Municipal Building, Room 200
Detroit, MI 48226

RE: Petition to place a garbage bin/flower planter on the sidewalk of the G A R Building on Cass Avenue
Submitted by Republic Tavern & New GAR, LLC

Dear Honorable City Council Members,

This letter from Republic Tavern and New GAR, LLC serves as a petition to request permission to place a garbage bin/flower planter outside of the G A R Building located at 1942 W. Grand River Avenue.

Project Description:

The G A R project includes the redevelopment of the castle-like structure at the intersection of Grand River and Cass Ave. The project has exclusively commercial components. The ground level restaurants and office space created as part of the rehabilitation is owner-occupied coupled with available office space on the second and third floors. The property has been converted from an underutilized eyesore into an attractive commercial development that benefits not only those working there, but those in the surrounding areas.

Purpose for the Bin:

The triangular G A R building is on an "island" and lacks an alley or service side. Currently we must "export" the garbage to a distant parking lot which causes our employees to cross the very dangerous intersection at Cass and Grand River. With the bin outside the service door on Cass we would be able to either have curbside pick up or take the garbage to the current dumpster at a safer time of the day. We have no available storage space inside the building for the garbage because the restaurant generates too much waste for our space capacity.

The Details:

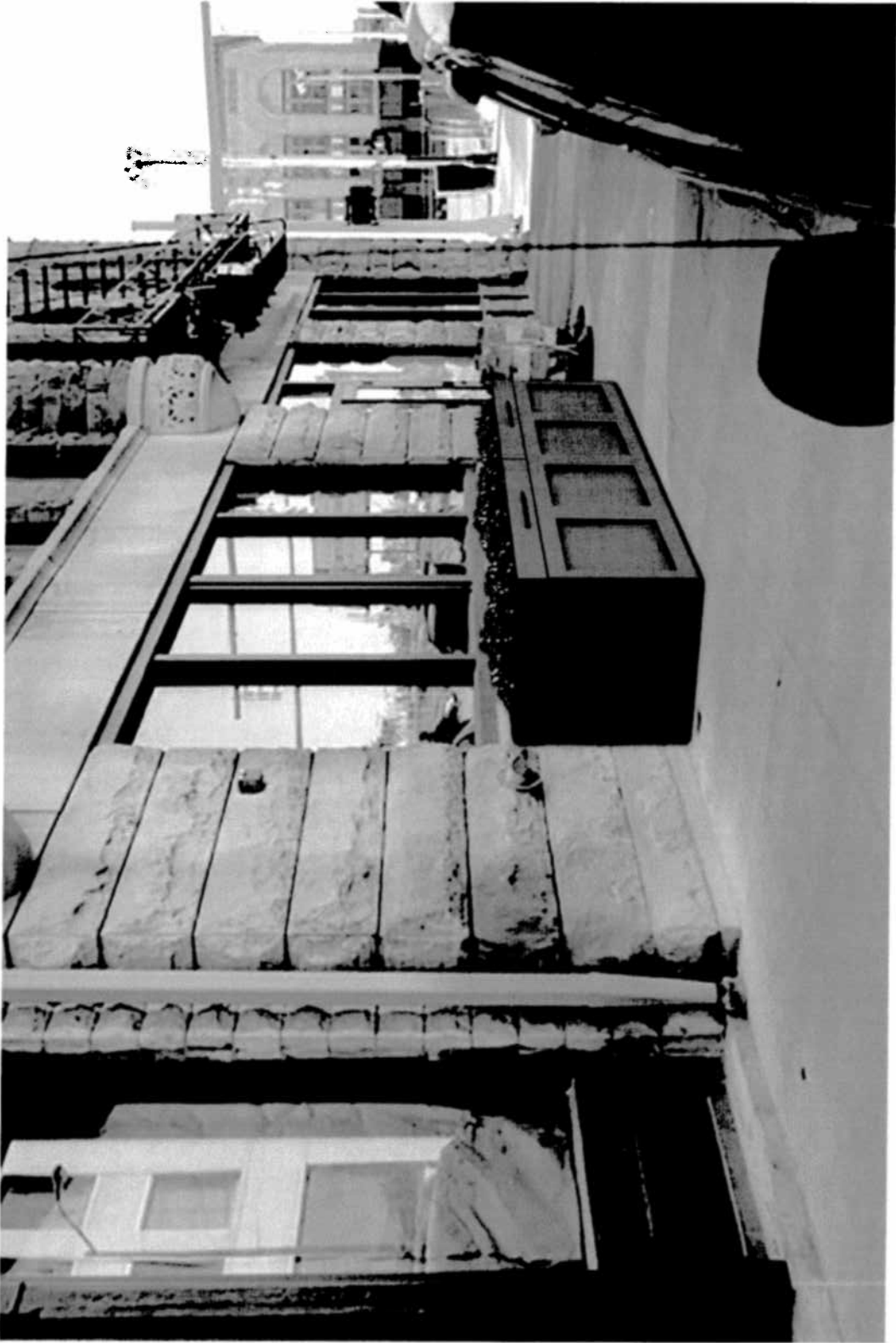
The bin would be positioned outside the kitchen service door on the Cass Avenue elevation of the building (please see site plan). Our bin would be custom built to blend in with the facade of the building and disguised as a flower planter. (please see the renderings) We do not want to detract from the beauty of the building that we have invested so much time and money to restore. The bin would be 12' long by 36" deep by 30" high. The sidewalk around the building is 10'6" wide and would allow over 7' of clearance space for pedestrians to pass.

Thank you for your consideration,

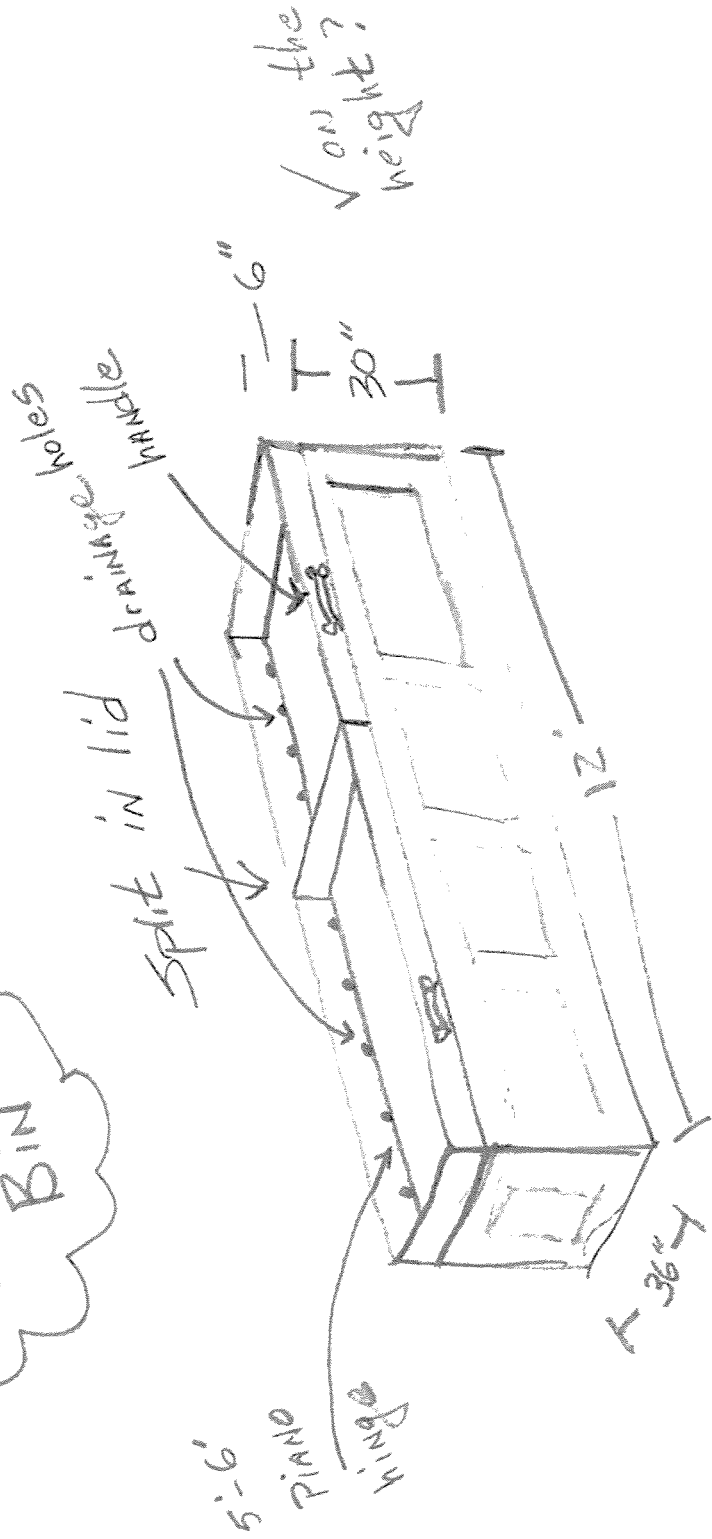


Tom Carleton
Partner, New GAR LLC

1942 W. Grand River Ave. Detroit MI 313-674-0280



Ext. GARBAGE BIN



to disguise AS A flower planter

G.A.R. BUILDING Garbage Bin / Planter CASS AVE.

ADAMS AVE
(60 FT. WD.)

TRAFFIC SIGNAL
MAST POLE

CONCRETE SAWCUT CONTROL
JOINTS AT 2'-0" O.C. TYPICAL IN
EACH DIRECTION THIS AREA

ADAMS STREET SIDEWALK
AREA = 1,152 SF

EXISTING ADA TRANSITION TO
REMAIN - TYPICAL

EXISTING CONCRETE CURB TO
REMAIN, REPAIR AREAS WHERE
CURB HAS BEEN DAMAGED

MECHANICAL AREAWAY W/ STEEL
GRATING FLUSH W/ SIDEWALK. SEE
SHEET AS.37 FOR DETAILS

CONCRETE SAWCUT CONTROL
JOINTS AT 5'-0" O.C. TYPICAL IN
EACH DIRECTION

4" CONCRETE PAVING ON 4"
COMPACTED GRAVEL BASE - TYPICAL
AT ALL NEW SIDEWALK AREAS

EXISTING CL

BASEMENT V

2 X 2 X 1/4"

BUILDING FZ

1" X 2" STEEL

AREAWAY C

8" WIDE CON

AROUND (3)

AREAWAY. F

CAST INTO C

SUPPORT ST

CONCRETE S

COMPACTED

EXISTING ST

FOUNDATIO

AREAWAY

4" CONCRE

COMPACTED

FLOOR OF A

NEW FLOOR

INTEGRATED

CONCRETE S

EXISTING FC

FOR AREAW

**GRAND ARMY OF THE
REPUBLIC BUILDING**
1942 GRAND RIVER
AVENUE
TAX ID: 02000361
0.115 ACRES

CASS AVENUE SIDEWALK AREA = 1,436 SF

CASS AVE
(71 FT. WD.)

RESTAURANT ENTRANCE
ELEVATION 99'-0"

KITCHEN ENTRANCE
ELEVATION 100'-0"

MAIN BUILDING ENTRANCE
ELEVATION 109'-0"

CONCRETE SAWCUT CONTROL
JOINTS AT 2'-0" O.C. TYPICAL IN
EACH DIRECTION THIS AREA

GRAND RIVER AVENUE SIDEWALK
AREA = 2,158 SF

GRAND RIVER AVE
(100 FT. WD.)

DINER ENTRANCE
ELEVATION 100'-0"

TRAFFIC SIGNAL
MAST POLE

DRAIN AT BOTTOM OF
AREAWAY

6" WIDE CONCRETE CURB
FLUSH W/ SIDEWALK
ELEVATION AROUND
PERIMETER OF AREAWAY

MECHANICAL DUCT. SEE
MECHANICAL DRAWINGS

EXISTING ADA ACCESSIBLE CURB

