

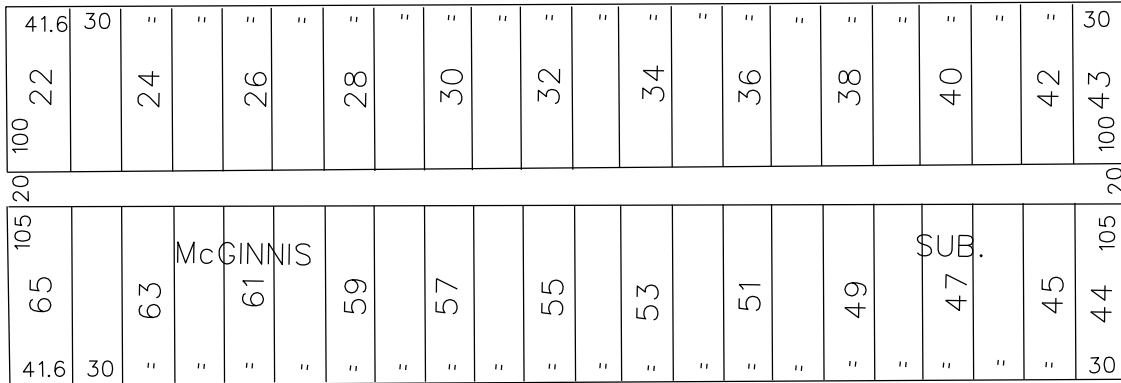
PETITION NO. 639  
 GIFFELS WEBSTER  
 28 W. ADAMS, SUITE 1200  
 DETROIT, MICHIGAN 48226  
 C/O EDWARD SIEGEL  
 PHONE NO. 313 638-1470



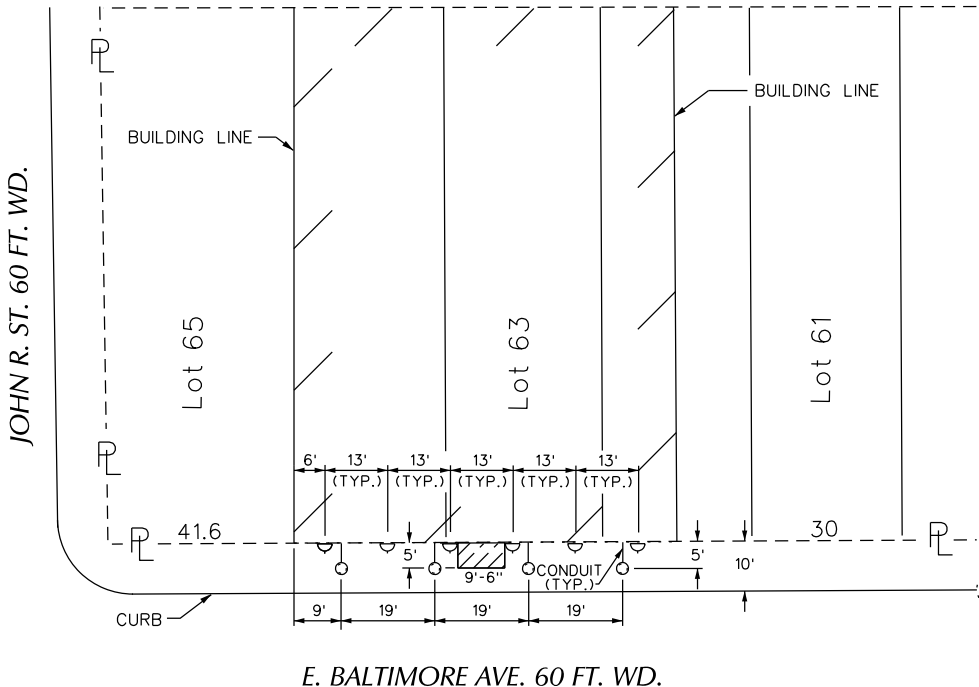
JOHN R. ST. 60 FT. WD.

**E. MILWAUKEE AVE. 60 FT. WD.**

BRUSH ST. 60 FT. WD.



**E. BALTIMORE AVE. 60 FT. WD.**



**LEGEND**

- In-Ground LED Floodlight W/PVC Cable Conduit
- Vario LED Exterior Wall Sconce
- 5' X 9'-6" Galvanized Steel / Wood Canopy

- REQUEST ENCROACHMENT  
 (With Canopy, Wall Sconces & Uplighting)  
 (FOR OFFICE USE ONLY)

CARTO 31 F

B					
A					
DESCRIPTION		DRWN	CHKD	APPD	DATE
REVISIONS					
DRAWN BY	WLW	CHECKED			
DATE	05-11-15	APPROVED			

**REQUEST ENCROACHMENT  
 INTO E. BALTIMORE  
 AT 207 E. BALTIMORE**  
 (With Canopy, Wall Sconces & Uplighting)

<b>CITY OF DETROIT    CITY ENGINEERING DEPARTMENT    SURVEY BUREAU</b>	
JOB NO.	01-01
DRWG. NO.	X 639