

PETITION NO. 581
 WD PARTNERS
 7007 DISCOVERY BLVD.
 DUBLIN, OHIO 43017
 C/O SETH DORMAN
 PHONE NO. 614 634-7000

"REVISED"



ST. ANTOINE ST. 50 FT. WD.

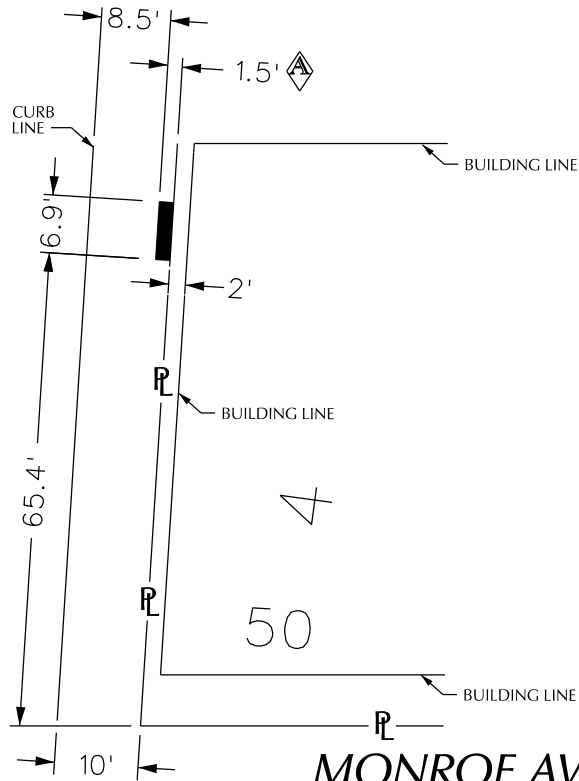
MACOMB AVE. 50 FT. WD.

50	"	"	50	53	"	"	"	"	53	57.96
105.25	4	FARM	2	7	105.25	105.25	7	5	3	7
20	VACATED									20
105.25	4	"	2	7	105.25	45.07	"	5	"	65.06
50	"	"	50	53	"	"	"	"	53	57.54
105.25	4	"	2	7	105.25	7	"	5	3	7
20	VACATED									20
105.25	4	"	2	7	105.25	7	"	5	3	7
50	"	"	50	53	"	"	"	"	53	57.54

CHRYSLER FWY.

MONROE AVE. 50 FT. WD.

ST. ANTOINE ST. 50 FT. WD.



■ - REQUEST ENCROACHMENT
 (With Permanent Stairwell)

MONROE AVE. 50 FT. WD.

(FOR OFFICE USE ONLY)

CARTO 28 A

B					
A	REVISED- REDUCE THE ENCROACHMENT FROM 2.8' TO 1.5'. REQUESTED ON 6/18/2015.	WLW	KSM	KSM	6/22/15
DESCRIPTION		DRWN	CHKD	APPD	DATE
REVISIONS					
DRAWN BY		CHECKED			
DATE		APPROVED			
04-01-15					

**REQUEST ENCROACHMENT
 (With Permanent Stairwell)
 INTO ST. ANTOINE
 AT 1200 ST. ANTOINE**

**CITY OF DETROIT
 CITY ENGINEERING DEPARTMENT
 SURVEY BUREAU**

JOB NO. 01-01
 DRWG. NO. X 581