

PETITION NO. 565
 SDG
 UAW - FORD NATIONAL PROGRAMS CENTER
 615 GRISWOLD, SUITE 103
 DETROIT, MICHIGAN 48226
 C/O GEOFFREY HARRISON
 PHONE NO. 313 964-3233

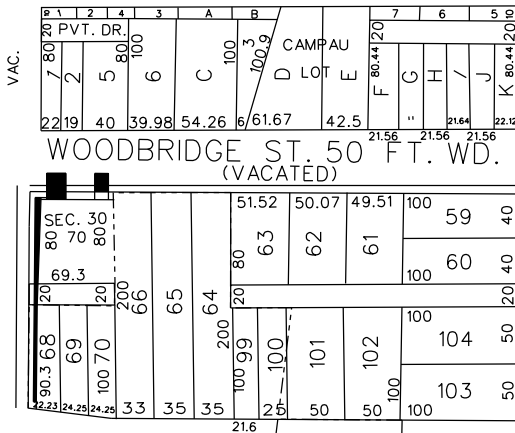


"REVISED"

W. JEFFERSON AVE. 210 FT. WD.

WOODBIDGE ST. 50 FT. WD.
(VACATED)

100.36 CAL.
 CONANT'S
 EXCHANGE

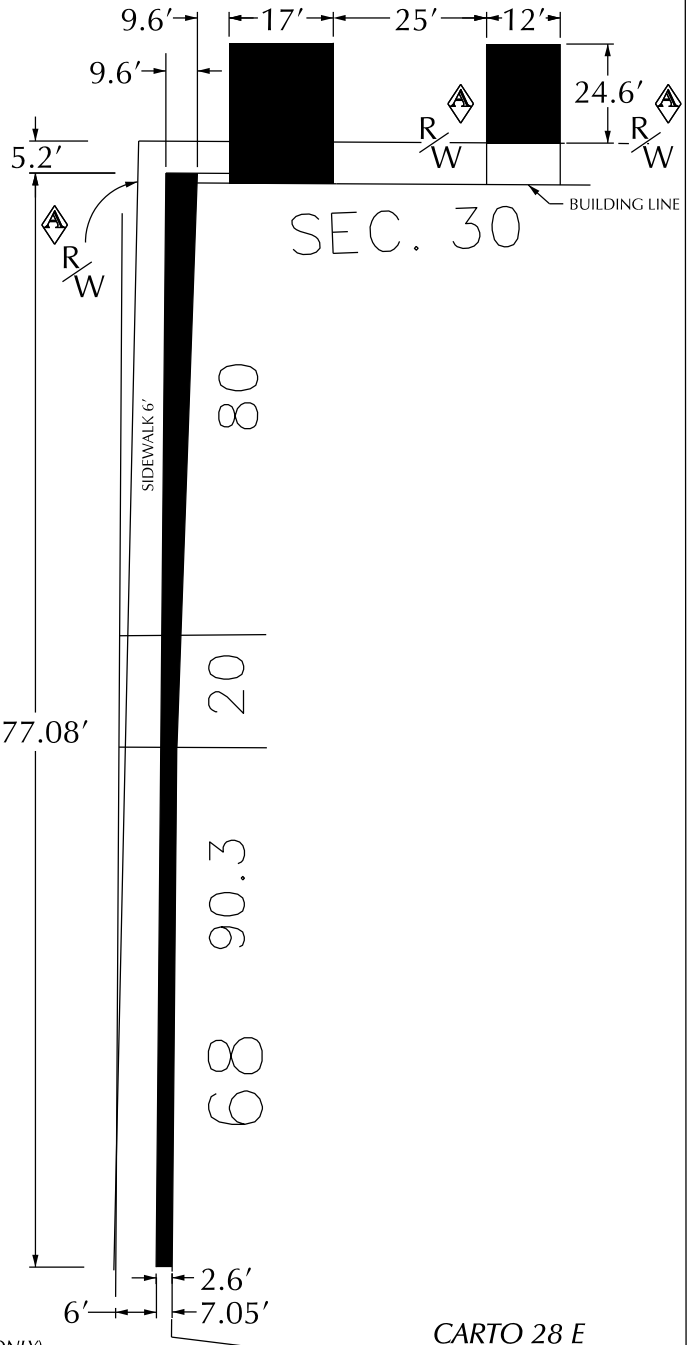


CIVIC CENTER DR.
 36.74 FT. WD.

GRISWOLD ST. 50 FT. WD.
(VACATED)

CIVIC CENTER DR. 36.74 FT. WD.

ATWATER ST. 50 FT. WD.
(VACATED)



SEC. 30

- REQUEST ENCROACHMENT
 (With Parking Deck, Bridge and Ramp)

(FOR OFFICE USE ONLY)

CARTO 28 E

B					
A	REVISED: CHANGE FROM PROPERTY LINE TO RIGHT OF WAY REVISED ON 5/08/2015.	WLW	KSM	KSM	5/08/15
DESCRIPTION		DRWN	CHKD	APPD	DATE
REVISIONS					
DRAWN BY		CHECKED			
DATE		APPROVED			
03-25-15					

REQUEST ENCROACHMENT
 INTO CIVIC CENTER DR. AND
 WOODBRIDGE ST.
 AT 151 W. JEFFERSON AVE.
 (With Parking Deck, Bridge and Ramp)

CITY OF DETROIT CITY ENGINEERING DEPARTMENT SURVEY BUREAU	
JOB NO.	01-01
DRWG. NO.	X 565