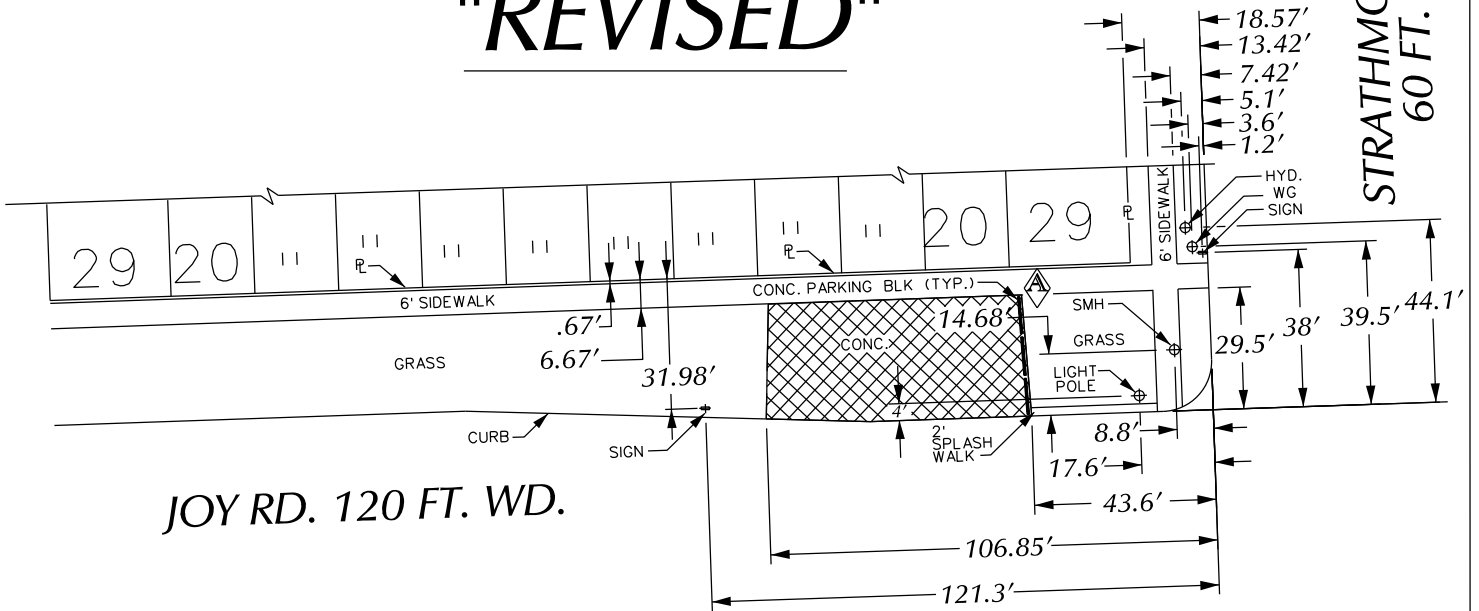


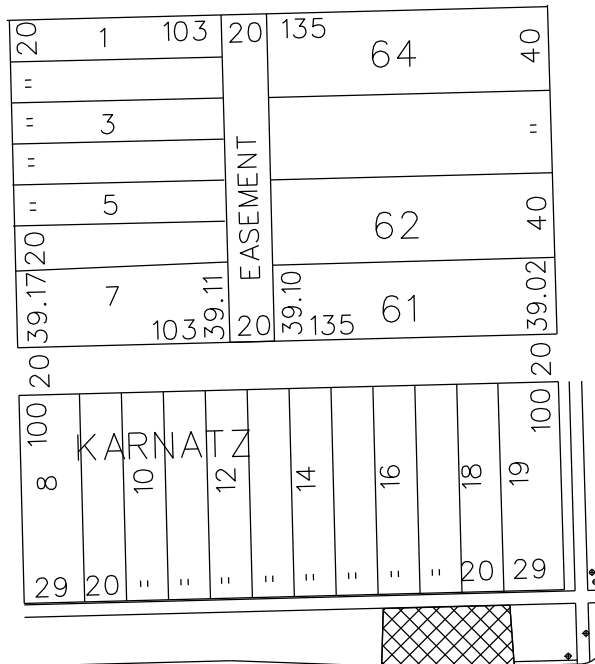
PETITION NO. 552
 RAY'S B. COLLISION INC.
 14516 JOY RD.
 DETROIT, MICHIGAN 48228
 C/O RAY BEJJANI
 PHONE NO. 313 433-7731



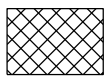
"REVISED"



HUBBELL AVE.
86 FT. WD.



STRATHMOOR AVE.
60 FT. WD.



- REQUESTED BERM USE
(For Parking Only)

JOY RD. 120 FT. WD.

(FOR OFFICE USE ONLY)

CARTO 82 E

B					
A	REVISED: ADDING CONCRETE PARKING BLOCKS	WLW	KSM	KSM	3/11/16
DESCRIPTION		DRWN	CHKD	APPD	DATE
REVISIONS					
DRAWN BY	WLW	CHECKED			
DATE	12-11-15	APPROVED			

**REQUEST BERM USE
(For Parking Only)
INTO JOY RD.
AT 14516 JOY RD.**

CITY OF DETROIT CITY ENGINEERING DEPARTMENT SURVEY BUREAU	
JOB NO.	01-01
DRWG. NO.	X 552