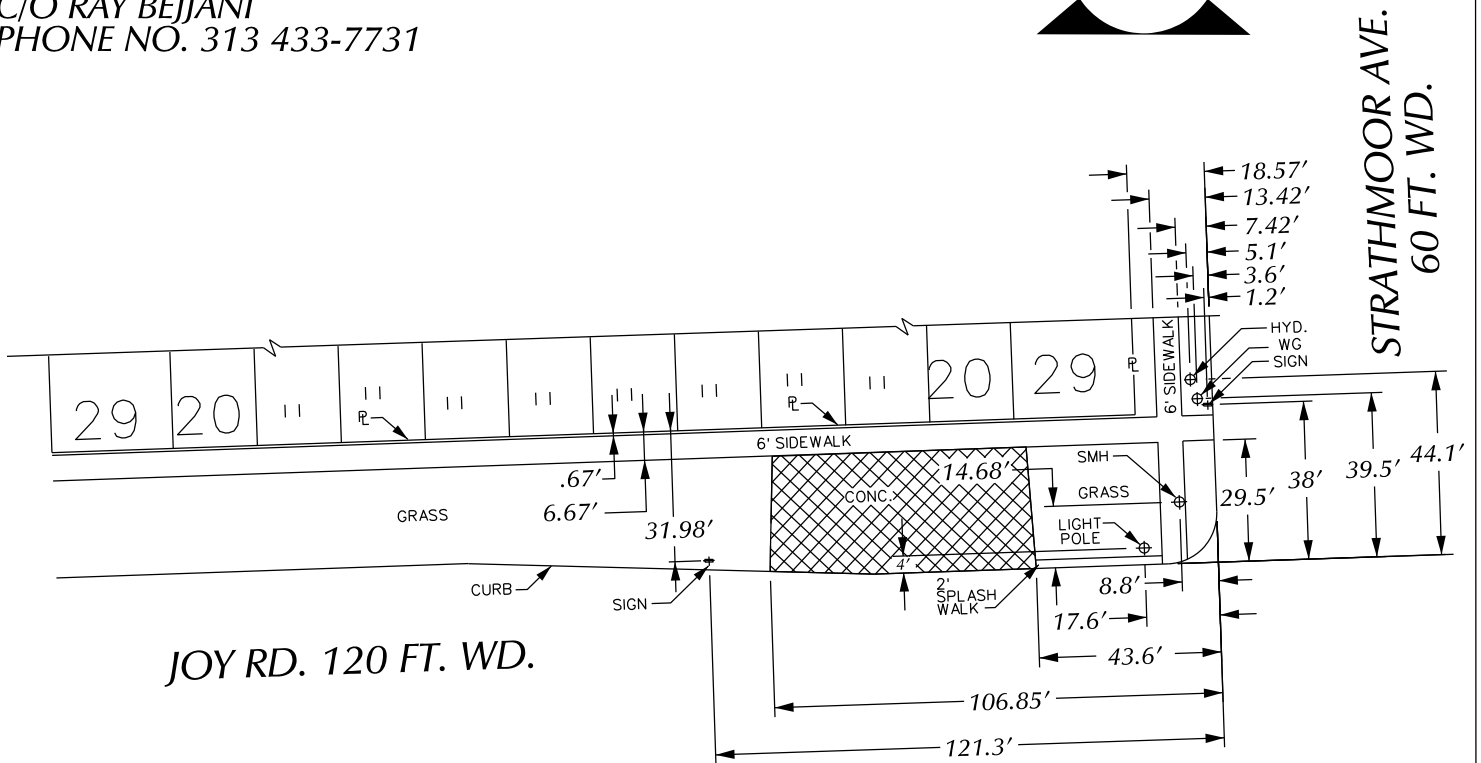


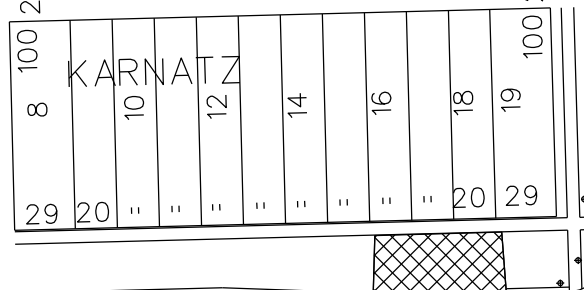
PETITION NO. 552
 RAY'S B. COLLISION INC.
 14516 JOY RD.
 DETROIT, MICHIGAN 48228
 C/O RAY BEJJANI
 PHONE NO. 313 433-7731



HUBBELL AVE.
 86 FT. WD.

20	1	103	20	135	64	40
"	3		EASEMENT			"
"	5			62	40	
39.17	20	7		103	39.11	20
20	20	100	20	135	61	39.02

STRATHMOOR AVE.
 60 FT. WD.



- REQUESTED BERM USE
 (For Parking Only)

JOY RD. 120 FT. WD.

(FOR OFFICE USE ONLY)

CARTO 82 E

REQUEST BERM USE
 (For Parking Only)
 INTO JOY RD.
 AT 14516 JOY RD.

CITY OF DETROIT
 CITY ENGINEERING DEPARTMENT
 SURVEY BUREAU

JOB NO. 01-01

DRWG. NO. X 552

B					
A					
DESCRIPTION	DRWN	CHKD	APPD	DATE	
REVISIONS					
DRAWN BY	WLW	CHECKED			
DATE	12-11-15	APPROVED			