

PETITION NO. 531
 JAFFE, RAITT, HEUER & WEISS
 C/O 1903 WILKINS, LLC
 27777 FRANKLIN RD. SUTIE 2500
 SOUTHFIELD, MICHIGAN 48034
 C/O J. PARKER IHRIE, ESQ.
 PHONE NO. 248 727-1428

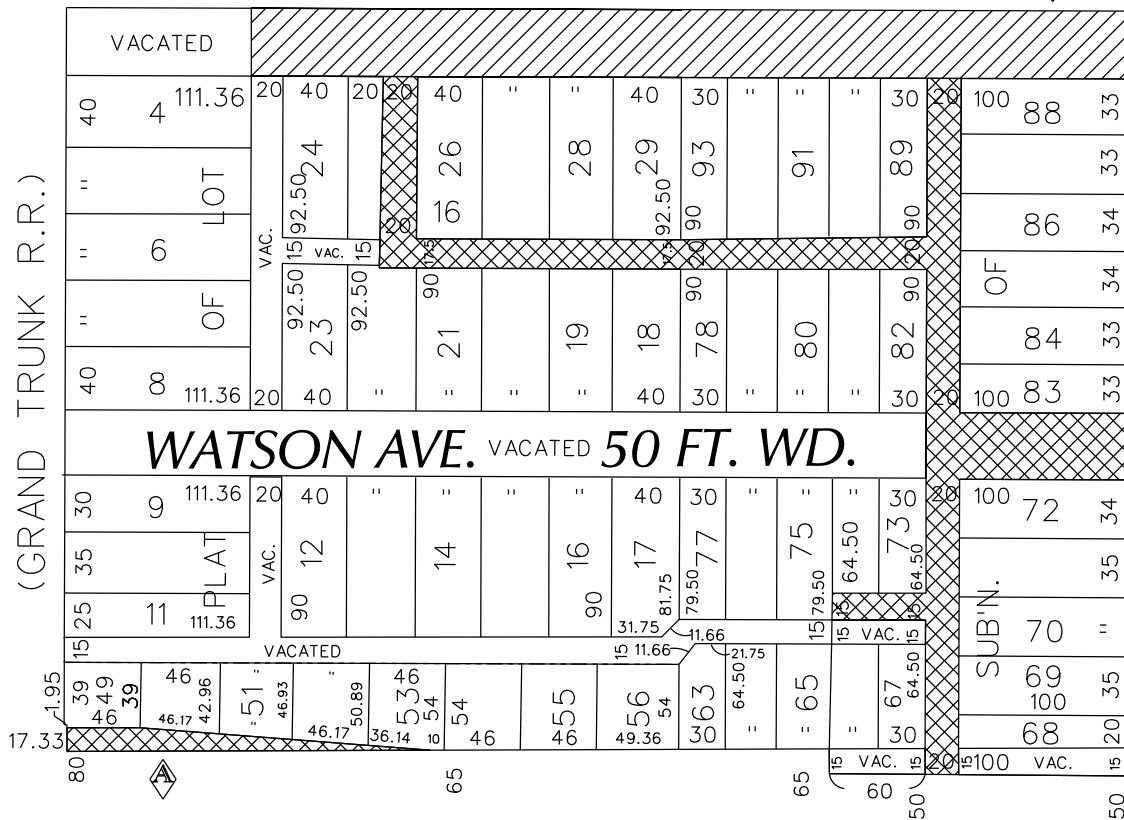


"REVISED"

ERSKINE AVE. 50 FT. WD.

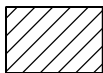
DEQUINDRE CUT 70 FT. WD.

(GRAND TRUNK R.R.)



ST. AUBIN AVE. 50 FT. WD.

WILKINS AVE. 50 FT. WD.



- REQUESTED CONVERSION TO EASEMENT



- REQUESTED VACATION

(FOR OFFICE USE ONLY)

CARTO 39 B

B	REVISE: ADDING A PORTION OF ERSKINE ST. TO REQUEST AN CONVERSION TO EASEMENT REQUESTED ON 5/13/2015.	WLW	KSM	KSM	5/13/15
A	REVISE: ADDING A PORTION OF WILKINS ST. TO REQUEST TO OUTRIGHT VACATE. REQUESTED ON 3/11/2015.	WLW	KSM	KSM	3/23/15
DESCRIPTION		DRWN	CHKD	APPD	DATE
REVISIONS					
DRAWN BY	WLW	CHECKED			
DATE	02-09-14	APPROVED			

REQUEST TO OUTRIGHT VACATE A PORTION OF WATSON AVE. 50 FT. WD., A PORTION OF WILKINS AVE. AND VARIOUS PUBLIC ALLEYS, VARIOUS WIDTHS AND REQUEST TO CONVERSION TO EASEMENT A PORTION ERSKINE AVE., 50 FT. WD. BOUND BY ERSKINE, ST. AUBIN, WILKINS AVE. AND DEQUINDRE CUT

CITY OF DETROIT	
CITY ENGINEERING DEPARTMENT	
SURVEY BUREAU	
JOB NO.	01-01
DRWG. NO.	X 531