



City of Detroit
Detroit Water and Sewerage Department
Inter-Departmental Communication

TO: Richard Doherty, City Engineer
City Engineering/Department of Public Works

FROM: Debra Singleton, Manager II
Detroit Water and Sewerage Department

DATE: March 20, 2015

RE: Petition No. 527
Requested Renewal of Temporary Closure of Ledyard in the Block
Bound by Grand River, Fourth, Temple, Third, and Henry

We have reviewed the above Petition received by this office on February 6, 2015. With regard to DWSD's interests, our comment is as follows:

Our records indicate there are a water main and a sewer in Ledyard. However, DWSD has no objection to the requested temporary closure renewal provided that attached DWSD Provisions for Temporary Closure are strictly followed.

If you have any questions, please call me at (313) 267-8309.

Sincerely,

A handwritten signature in black ink, appearing to read "D. Singleton", written over the printed name.

Debra Singleton
Manager II
Claims and Permits

DS/gl

Attachments

CC: Cheryl Porter, WBB
Mohamad Farhat, CSF

Michael Duggan, Mayor

City of Detroit
City Engineering Division, Department of Public Works
Survey Bureau

NOTICE OF PROPOSED CHANGE IN PROPERTY

Date: 02/06/2015

Petition: x527

- | | |
|---|---|
| <input type="checkbox"/> AT&T Telecommunication | |
| <input type="checkbox"/> Cable Television (CATV) | <input type="checkbox"/> Vacation |
| <input type="checkbox"/> Detroit Edison (DTE) | |
| <input type="checkbox"/> Michigan Consolidated Gas (DTE) | <input type="checkbox"/> Conversion to Easement |
| <input type="checkbox"/> Fire Department | <input type="checkbox"/> Dedication |
| <input type="checkbox"/> Planning & Development Department | |
| <input type="checkbox"/> Public Lighting Authority | <input type="checkbox"/> Encroachment |
| <input type="checkbox"/> Public Lighting Dept. - Communication Division | |
| <input type="checkbox"/> Public Lighting Dept. - Overhead Line Division | |
| <input type="checkbox"/> Public Lighting Dept. - Underground Division | <input checked="" type="checkbox"/> Temporary Closing |
| <input type="checkbox"/> Police Department | |
| <input type="checkbox"/> Recreation Department | <input type="checkbox"/> Berm Use |
| <input type="checkbox"/> Sanitation Division, DPW | |
| <input type="checkbox"/> Street Design Bureau, DPW | |
| <input type="checkbox"/> Street Maintenance Division, DPW | |
| <input type="checkbox"/> Street and Traffic Division, DPW | |
| <input type="checkbox"/> Water and Sewerage Dept. - Sewer Design | |
| <input type="checkbox"/> Water and Sewerage Dept. - Water Design | |

A petition drawing is attached. Property shown on the attached print is proposed to be changed as indicated.

Kindly report (using the back of this sheet) the nature of your services (if any) affected by the proposed change and the estimated costs of removing and rerouting such services (if necessary).

Please return one copy to City Engineering Division, DPW. Retain one copy and print for you file.

Ron Brundidge, Director, Department of Public Works

By: Richard Doherty, CED DPW
City Engineer

**TO: City Engineering Division, DPW
65 Cadillac Square, Suite 900
Detroit, Michigan 48226-2873
Survey Bureau: 313-224-3970**

x527

The proposed change in property (referred to on the other side of this sheet) would affect our services as follows:

- Not Involved
- Involved; but asking you to hold action on this petition until further notice.
- Involved; but no objections to the property change.
- Involved; but no objections to the property change...provided as easement of the full width of the public right-of-way (street, alley or other public place) is reserved.
- Involved; the nature of our services and the estimated costs of removing and/or rerouting such services are:

(Utility or City Department)

By

Title

Date

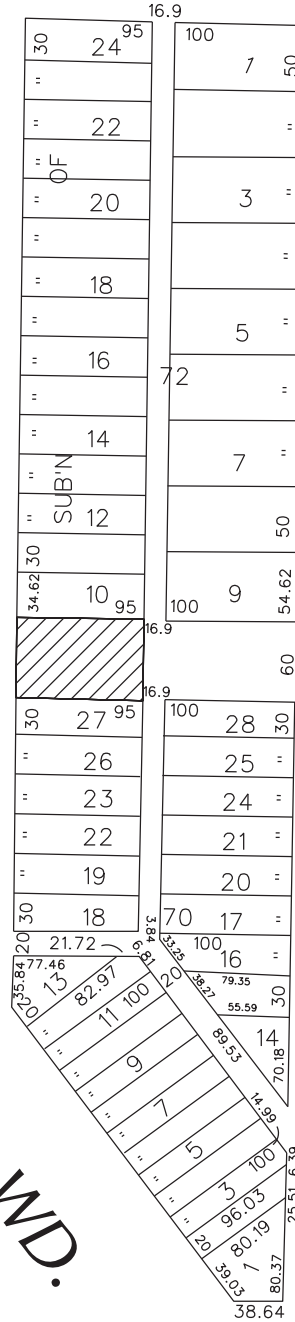
Area code – Telephone number

PETITION NO. 527
 MCKNIGHT, MCCLAW, CANZANO
 SMITH & RADTKE, P.C.
 C/O SERVICE EMPLOYEES CENTER
 400 GALLERIA OFFICENTRE, SUITE 117
 SOUTHFIELD, MICHIGAN 48034
 C/O PATRICK J. RORAI
 PHONE NO. 248 354-9650



TEMPLE AVE. 60 FT. WD.

GRAND RIVER AVE. 100 FT. WD.
 FOURTH AVE. 50 FT. WD.
 THIRD AVE. 50 FT. WD.



HENRY ST. 100 FT. WD.



- RENEWAL OF TEMPORARY ALLEY CLOSURE

(FOR OFFICE USE ONLY)

CARTO 29 E

RENEWAL OF TEMPORARY STREET CLOSURE
 A PORTION OF LEDYARD ST.
 60 FT. WD. IN THE BLOCK BOUND BY
 GD. RIVER, FOURTH, TEMPLE, THIRD AVE.
 AND HENRY ST.

CITY OF DETROIT
 CITY ENGINEERING DEPARTMENT
 SURVEY BUREAU

B					
A					
DESCRIPTION		DRWN	CHKD	APPD	DATE
REVISIONS					
DRAWN BY	WLW	CHECKED			
DATE	02-05-15	APPROVED			

JOB NO. 01-01
 DRWG. NO. X 527

PROVISIONS FOR TEMPORARY CLOSING

Detroit Water and Sewerage (DWSD) agrees to the proposed temporary closing of the right-of-way subject to fulfilling the following provisions:

1. Detroit Water and Sewerage Department forces shall have free and easy access to the water main and sewer facilities at all times to permit proper operation, maintenance and if required, alteration or repair of the water main and/or sewer facilities. Free and easy access shall mean that no structures or storage of materials will be allowed upon the temporarily closed street to hinder the movement of maintenance equipment.
2. Where a fence is placed across the temporarily closed portion of a street/alley, then a gate must be installed to permit access for DWSD forces. The gate shall remain unlocked 24 hours a day, unless a guard is stationed near the gate to allow the Detroit Water and Sewerage Department ingress and egress at any time to and from the temporarily closed street. The minimum dimensions of the gate or gates shall provide 15 foot vertical and 13 foot horizontal clearances for freedom of DWSD equipment movement.
3. Should the water main and/or sewer facilities be broken or damaged as a result of any action on the part of the petitioner or assigns, then in such event the petitioner or assigns shall be liable for all costs incident to the repair of such broken or damaged water main and appurtenances, and the petitioner waives all claims for damages.

These Provisions for Temporary Closing must be made a part of the City Council's Resolution granting the temporary closing of the subject right-of-way.

06/27/2014



WOODWARD

ROW'S DON'T
LINE UP

AVE 60'

CHARLOTTE
ST 60'

TEMPLE
AVE 60'

PARK

SIBLEY

HENRY

FISHER

CASS

CHARLOTTE
ST

THIRD

LEDYARD
ST

HENRY

GRAND RIVER

FISHER
FREEWAY
1-75

100'

100'

100'

100'

100'

100'

100'

100'

100'

20'

20'

20'

20'

20'

20'

20'

20'

20'

20'

12'

12'

12'

12'

12'

12'

12'

12'

12'

12'

16"

16"

16"

16"

16"

16"

16"

16"

16"

16"

22'

22'

22'

22'

22'

22'

22'

22'

22'

22'

30'

30'

30'

30'

30'

30'

30'

30'

30'

30'

38'

38'

38'

38'

38'

38'

38'

38'

38'

38'

40'SS

40'SS

40'SS

40'SS

40'SS

40'SS

40'SS

40'SS

40'SS

40'SS

45'SN

45'SN

45'SN

45'SN

45'SN

45'SN

45'SN

45'SN

45'SN

45'SN

50'

50'

50'

50'

50'

50'

50'

50'

50'

50'

55'

55'

55'

55'

55'

55'

55'

55'

55'

55'

58'

58'

58'

58'

58'

58'

58'

58'

58'

58'

60'

60'

60'

60'

60'

60'

60'

60'

60'

60'

60'

60'

60'

60'

60'

60'

60'

60'

60'

60'

60'

60'

60'

60'

60'

60'

60'

60'

60'

60'

60'

60'

60'

60'

60'

60'

60'

60'

60'

60'

60'

60'

60'

60'

60'

60'

60'

60'

60'

60'

60'

60'

60'

60'

60'

60'

60'

60'

60'

60'

60'

60'

60'

60'

60'

60'

60'

60'

60'

60'

60'

60'

60'

60'

60'

60'

60'

60'

60'

60'

60'

60'

60'

60'

60'

60'

60'

60'

60'

60'

60'

60'

60'

60'

60'

60'

60'

60'

60'

60'

60'

60'

60'

60'

60'

60'

60'

60'

60'

60'

60'

60'

60'

60'

60'

60'

60'

60'

60'

60'

60'

60'

60'

60'

60'

60'

60'

60'

60'

60'

60'

60'

60'

60'

60'

60'

60'

60'

60'

60'

60'

60'

60'

60'

60'

60'

60'

60'

60'

60'

60'

60'

60'

60'

60'

60'

60'

60'

60'

60'

60'

60'

60'

60'

60'

60'

60'

60'

60'

60'

60'

60'

60'

60'

60'

60'

60'

60'

60'

60'

60'

60'

60'

60'

60'

60'

60'

60'

60'

60'

60'

60'

60'

60'

60'

60'

60'

60'

60'

60'

60'

60'

60'

60'

60'

60'

60'

60'

60'

60'

60'

60'

