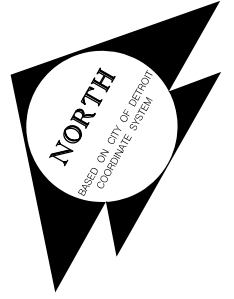
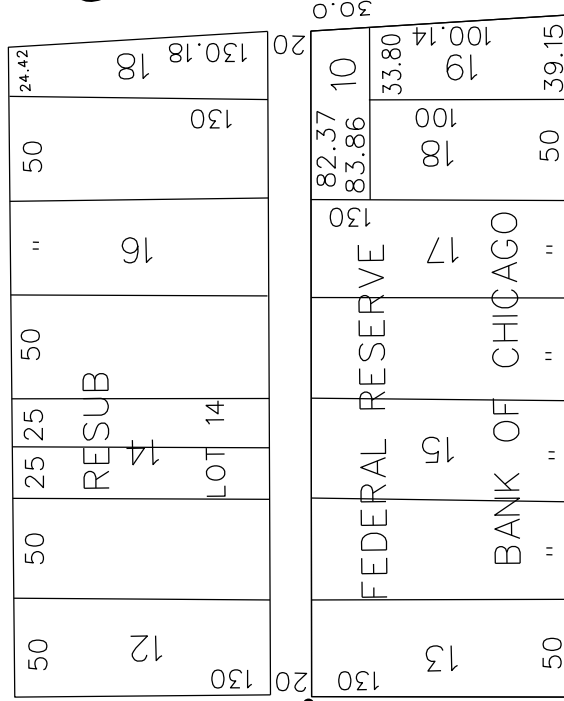


PETITION NO. 520
 PARJANA & PARJANA DISTRIBUTION
 1274 LIBRARY ST. SUITE 600
 DETROIT, MICHIGAN 48226
 C/O GREG McPARTLIN
 PHONE NO. 855 727-5262

GRISWOLD AVE. 90 FT. WD.

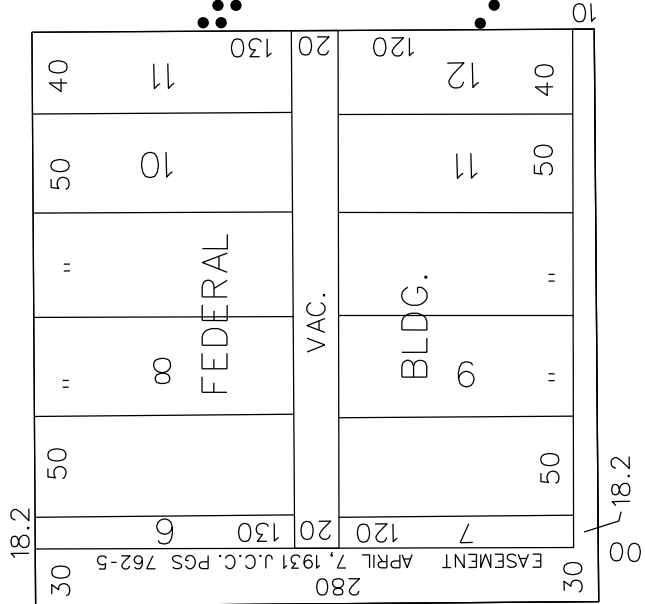


W. LAFAYETTE BLVD. 80 FT. WD.



FORT ST. W. 100 FT. WD.

SHELBY AVE. 90 FT. WD.



WASHINGTON BLVD. 80 FT. WD.

● - REQUEST ENCROACHMENT
 (With Energy-Passive
 Groundwater Recharge Product)

(FOR OFFICE USE ONLY)

CARTO 28 E

B					
A					
DESCRIPTION		DRWN	CHKD	APPD	DATE
REVISIONS					
DRAWN BY	WLW	CHECKED			
DATE	01-22-15	APPROVED			

REQUEST ENCROACHMENT
 INTO SHELBY AVE. BETWEEN
 W. FORT ST. AND W. LAFAYETTE BLVD.
 (With Energy-Passive
 Groundwater Recharge Product)

CITY OF DETROIT	
CITY ENGINEERING DEPARTMENT	
SURVEY BUREAU	
JOB NO.	01-01
DRWG. NO.	X 520