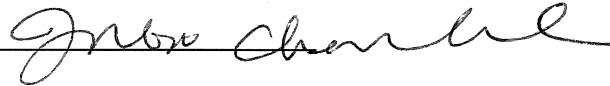


TO: City Engineering Division, DPW
900 Cadillac Tower Building
65 Cadillac Square
Detroit, Michigan 48226-2873
Survey Bureau: 313-224-3970
Fax: 313-224-3471

Ref. No.201504020
Petition No. 403

- () Involved; but asking you to hold action on this petition until further notice.
- () Involved; but no objections to the property change – provided an easement of the full width of the public right-of-way (street, alley or other public place) is reserved.
- () Involved; the nature of our services, and the estimated costs of removing and/or rerouting such services are:
- (x) Involved; The request for berm use (for parking only) into Strathmoor Avenue at 14501 W. Eight Mile Road as outlined in petition # 403 as shown on drawing no. x403 dated 4-8-2015 is approved provided that the following conditions are met with:
 1. Requestor shall be responsible, at his/her expense, to install/ maintain continuous concrete stoppers for separation of vehicular and pedestrian usage as shown on the attached typical drawing by Traffic Engineering Division dated 05/13/2009 showing the layout of the berm parking.
 2. Requestor shall be responsible, at his/her expense, to construct/modify the berm surface as per City standards. Requestor shall be responsible to remove curb along the edge of the berm parking to allow for entry/exit. Requestor shall be responsible for maintaining the berm surface and removal of snow from the berm area, at his/her expense.
 3. The requestor shall be responsible, at his/her expense, to install/maintain parking control signs and pavement markings associated with the berm parking as per City standards.
 4. The owner/requestor should indemnify City for any potential claims by entering in an indemnification agreement with City of Detroit Law Department.
 5. City reserves the right to revoke the approval of berm parking if it is determined to be in the best interest of the City of Detroit or in case of requestor's failure to comply with the terms and conditions stipulated in the approval of the berm parking.
 6. This request is approved **only for parallel parking**. On street parking along the stretch adjacent to the berm parking will not be permitted

Traffic Engineering Division - DPW
(Utility or City Department)

for Ashok Patel
By 

Head Transportation Engineer
Title

June 1, 2015
Date

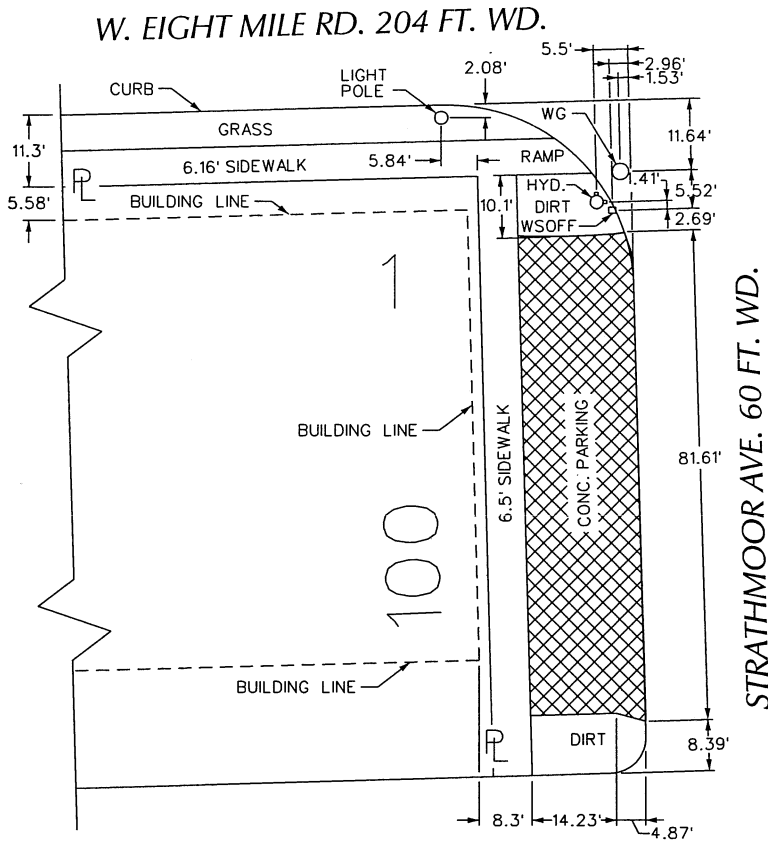
313 224-1610
Area code-Telephone number

MA/ma

PETITION NO. 403
 NOLAN INVESTMENT GROUP LLC
 14501 W. 8 MILE RD.
 DETROIT, MICHIGAN 48223
 C/O MUNIM YONO SR.
 PHONE NO. 248 508-6255

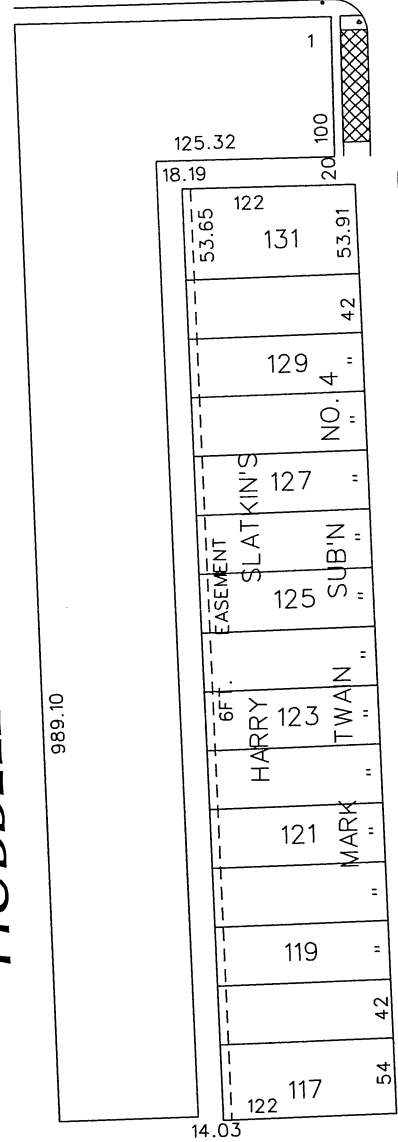


W. EIGHT MILE RD.
 204 FT. WD.



STRATHMOOR AVE. 60 FT. WD.

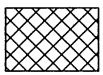
HUBBELL AVE. 76 FT. WD.



STRATHMOOR AVE. 60 FT. WD.

NORFOLK AVE.
 50 FT. WD.

CARTO 87 B



- REQUESTED BERM USE
 (For Parking Only)

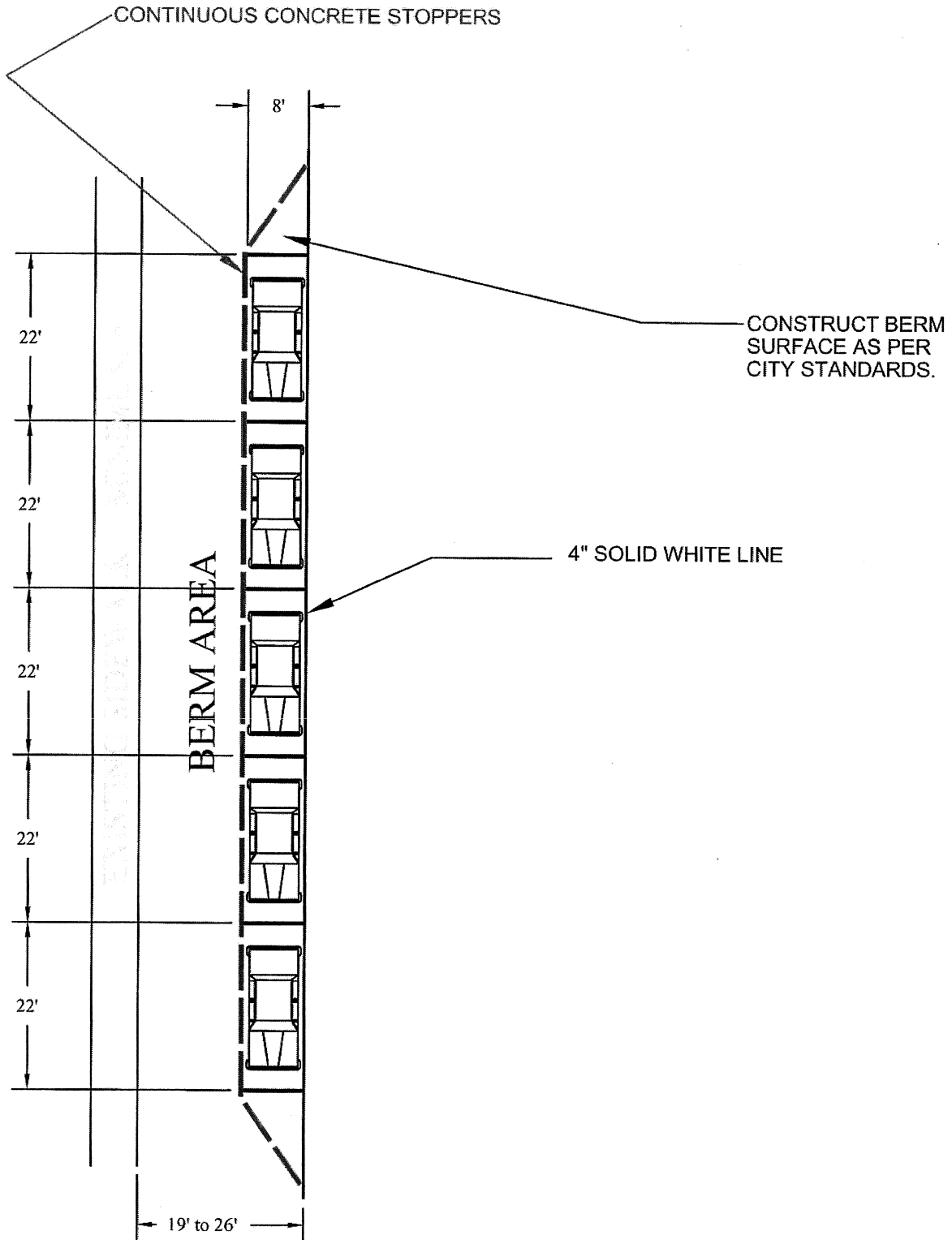
(FOR OFFICE USE ONLY)

B					
A					
DESCRIPTION	DRWN	CHKD	APPD	DATE	
REVISIONS					
DRAWN BY	CHECKED				
DATE	APPROVED				
04-08-15					

REQUEST BERM USE
 (For Parking Only)
 INTO STRATHMOOR AVE.
 AT 14501 W. 8 MILE RD.

CITY OF DETROIT CITY ENGINEERING DEPARTMENT	
SURVEY BUREAU	
JOB NO.	01-01
DRWG. NO.	X 403

T:\LAPPIN\Parking Berm SK 2a PP.dwg, 6/16/2009 2:12:55 PM, Kyocera KM-C2525E KX, 1:240



NOTE: ON STREET PARKING
WILL NOT BE PERMITTED.

CITY OF DETROIT
DEPARTMENT OF PUBLIC WORKS
TRAFFIC ENGINEERING DIVISION

PARKING BERM FOR PARALLEL PARKING

DRAWN : J. LAPPIN
SCALE : 1" = 20'
DATE : 05 - 13 - 2009

SKETCH #2a