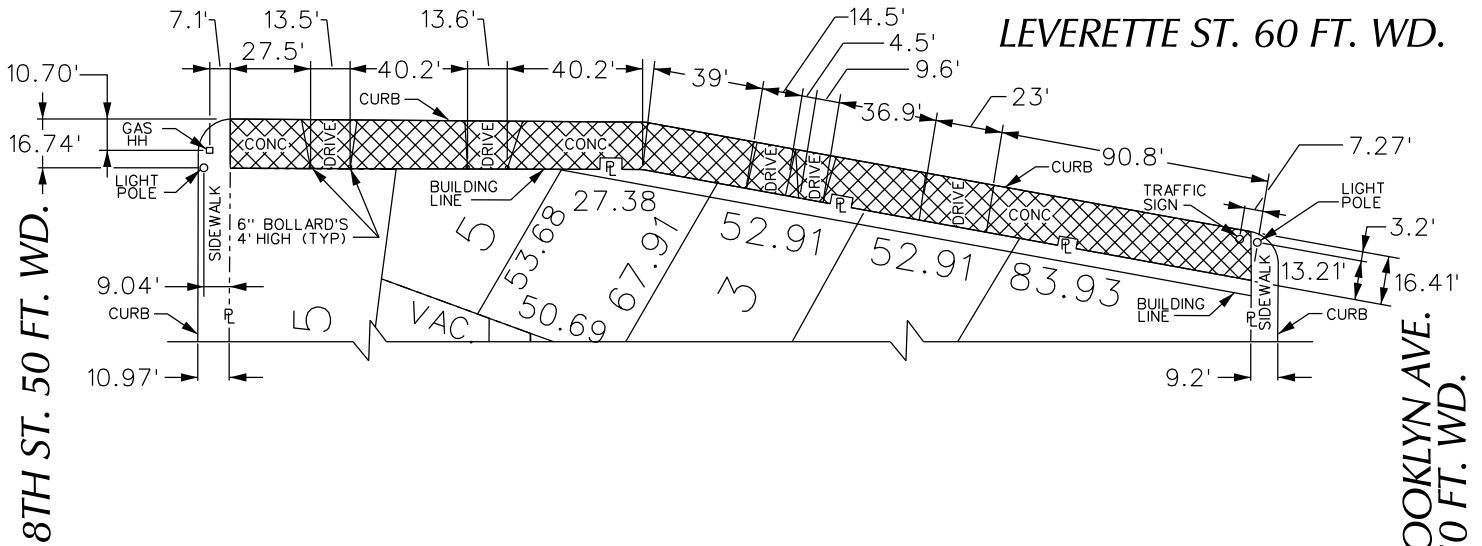
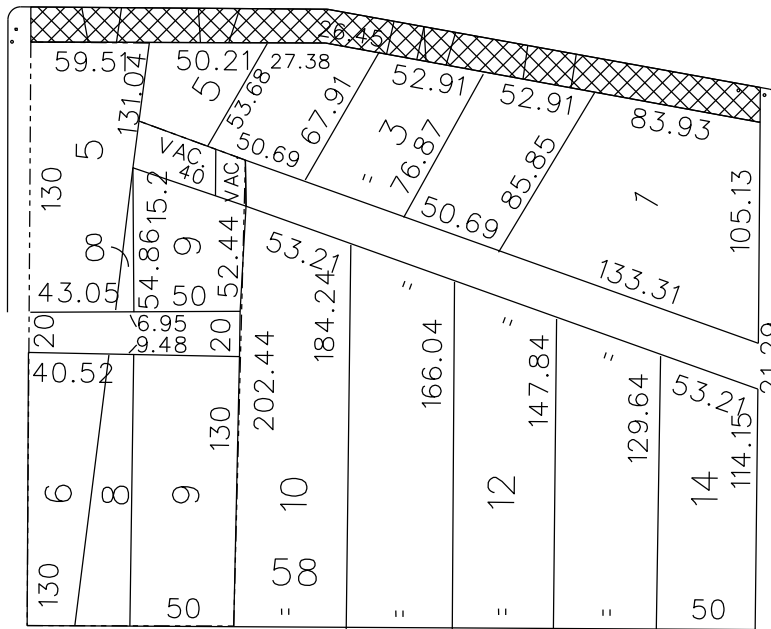


PETITION NO. 351
 SAM HUSSEIN
 METROTECH COLLISION
 1301 LEVERETTE ST.
 DETROIT, MICHIGAN 48221
 C/O SAM HUSSEIN
 PHONE NO. 313 522-4567



LEVERETTE ST. 60 FT. WD.

8TH ST. 50 FT. WD.



BAGLEY AVE. 60 FT. WD.

BROOKLYN AVE. 50 FT. WD.



- REQUESTED BERM USE
 (For Parking Only)

(FOR OFFICE USE ONLY)

CARTO 28 C

B					
A					
DESCRIPTION	DRWN	CHKD	APPD	DATE	
REVISIONS					
DRAWN BY	WLW	CHECKED			
DATE	09-18-15	APPROVED			

**REQUEST BERM USE
 (For Parking Only)
 INTO LEVERETTE ST.
 AT 1301 LEVERETTE ST.**

CITY OF DETROIT CITY ENGINEERING DEPARTMENT	
SURVEY BUREAU	
JOB NO.	01-01
DRWG. NO.	X 351