

TO: City Engineering Division, DPW
2 Woodward Ave., Suite 642
Detroit, Michigan 48226-3462
Survey Bureau: 313-224-3970

Ref No: 201509020
Petition No. 351

- () Involved; but asking you to hold action on this petition until further notice.
- () Involved; but no objections to the property change – provided an easement of the full width of the public right-of-way (street, alley or other public place) is reserved.
- () Involved; the nature of our services, and the estimated costs of removing and/or rerouting such services are:
- (x) Involved; **have objection** to the request for berm use (for parking only) into Leverette St. at 1301 Leverette St. as shown on drawing no. x351 dated 9/18/2015 since the proposed berm parking would potentially block several driveways.

Traffic Engineering Division - DPW
(Utility or City Department)

for

Ashok Patel
By



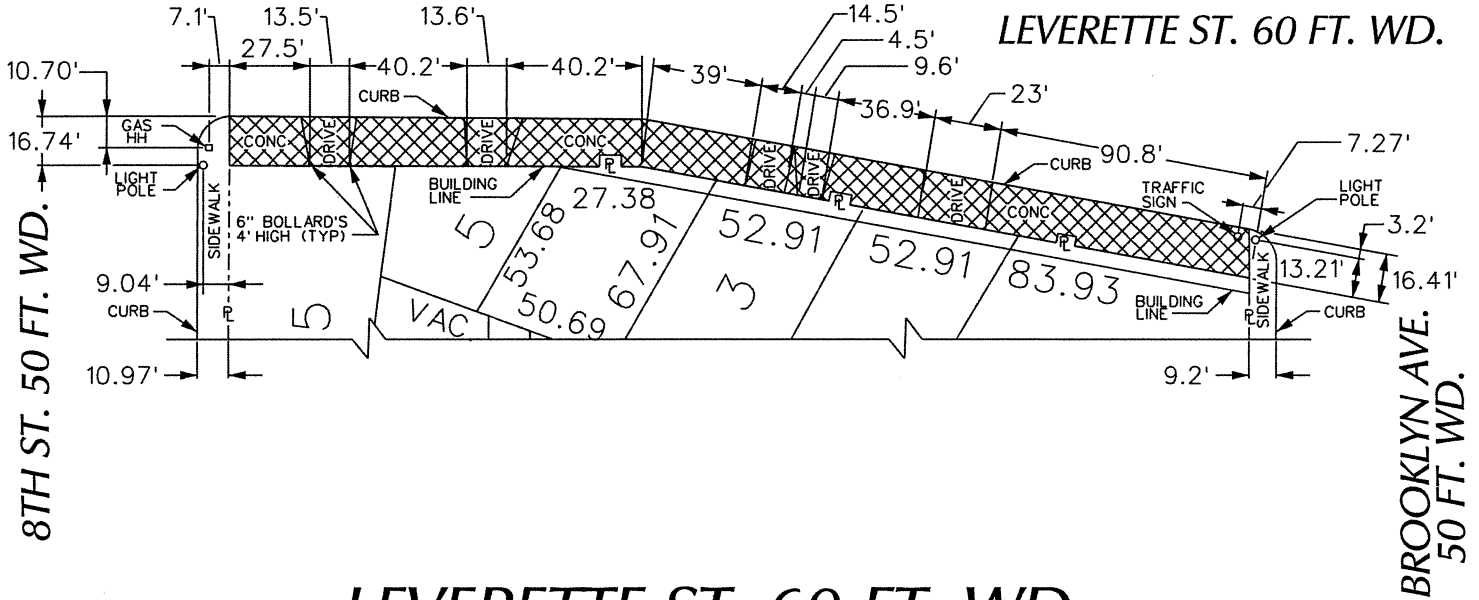
Head Transportation Engineer
Title

December 3, 2015
Date

313 224-1610
Area code-Telephone number

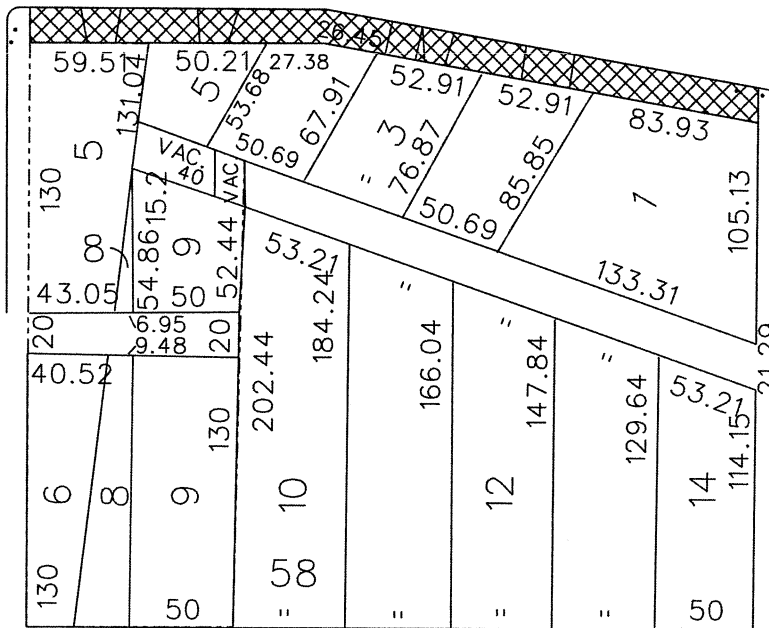
MA/ma

PETITION NO. 351
 SAM HUSSEIN
 METROTECH COLLISION
 1301 LEVERETTE ST.
 DETROIT, MICHIGAN 48221
 C/O SAM HUSSEIN
 PHONE NO. 313 522-4567



LEVERETTE ST. 60 FT. WD.

8TH ST. 50 FT. WD.



BAGLEY AVE. 60 FT. WD.

BROOKLYN AVE. 50 FT. WD.



- REQUESTED BERM USE
 (For Parking Only)

(FOR OFFICE USE ONLY)

CARTO 28 C

B					
A					
DESCRIPTION		DRWN	CHKD	APPD	DATE
REVISIONS					
DRAWN BY	WLW	CHECKED			
DATE	09-18-15	APPROVED			

**REQUEST BERM USE
 (For Parking Only)
 INTO LEVERETTE ST.
 AT 1301 LEVERETTE ST.**

**CITY OF DETROIT
 CITY ENGINEERING DEPARTMENT
 SURVEY BUREAU**

JOB NO. 01-01
 DRWG. NO. X-351