



City of Detroit  
Inter-Departmental Communication

---

**TO:** Richard Doherty, City Engineer  
City Engineering/Department of Public Works

**FROM:** Debra Singleton, Manager II  
Detroit Water and Sewerage Department

**DATE:** July 27, 2015

**RE:** Petition No. 313  
Requested Encroachment into the East/West Alley in the Area Bound by Library St., Broadway St., E. Grand River, and Gratiot Ave.  
With Seasonal Mobile Tables, Benches Planters, Artwork and Carts

---

We have reviewed the above Petition received by this office on May 4, 2015. With regard to DWSD's interests, our comments are as follows:

- Our records indicate that there are a water main and a sewer in the alley. DWSD has no objections to the encroachment, if the petitioner agrees to follow the terms stated in the attached provision for encroachment.

If you have any questions, please call me at (313) 267-8309.

Sincerely,

Debra Singleton  
Manager II  
Claims and Permits

DS//gl

Attachments

CC: Cheryl Porter, WBB  
Mohamad Farhat, CSF

Michael Duggan, Mayor

**City of Detroit**  
**City Engineering Division, Department of Public Works**  
**Survey Bureau**

**NOTICE OF PROPOSED CHANGE IN PROPERTY**

**Date:** 05/04/2015

**Petition:** x313

- |   |  |
|---|--|
| <input type="checkbox"/> AT&T Telecommunication                         |  |
| <input type="checkbox"/> Cable Television (CATV)                        | <input type="checkbox"/> Vacation                |
| <input type="checkbox"/> Detroit Edison (DTE)                           |  |
| <input type="checkbox"/> Michigan Consolidated Gas (DTE)                | <input type="checkbox"/> Conversion to Easement  |
| <input type="checkbox"/> Fire Department                                | <input type="checkbox"/> Dedication              |
| <input type="checkbox"/> Planning & Development Department              |  |
| <input type="checkbox"/> Public Lighting Authority                      | <input checked="" type="checkbox"/> Encroachment |
| <input type="checkbox"/> Public Lighting Dept. - Communication Division |  |
| <input type="checkbox"/> Public Lighting Dept. - Overhead Line Division |  |
| <input type="checkbox"/> Public Lighting Dept. - Underground Division   | <input type="checkbox"/> Temporary Closing       |
| <input type="checkbox"/> Police Department                              |  |
| <input type="checkbox"/> Recreation Department                          | <input type="checkbox"/> Berm Use                |
| <input type="checkbox"/> Sanitation Division, DPW                       |  |
| <input type="checkbox"/> Street Design Bureau, DPW                      |  |
| <input type="checkbox"/> Street Maintenance Division, DPW               |  |
| <input type="checkbox"/> Street and Traffic Division, DPW               |  |
| <input type="checkbox"/> Water and Sewerage Dept. - Sewer Design        |  |
| <input type="checkbox"/> Water and Sewerage Dept. - Water Design        |  |

A petition drawing is attached. Property shown on the attached print is proposed to be changed as indicated.

Kindly report (using the back of this sheet) the nature of your services (if any) affected by the proposed change and the estimated costs of removing and rerouting such services (if necessary).

Please return one copy to City Engineering Division, DPW. Retain one copy and print for you file.

Ron Brundidge, Director, Department of Public Works

By: Richard Doherty, CED DPW  
City Engineer

**TO: City Engineering Division, DPW  
65 Cadillac Square, Suite 900  
Detroit, Michigan 48226-2873  
Survey Bureau: 313-224-3970**

x313

The proposed change in property (referred to on the other side of this sheet) would affect our services as follows:

- Not Involved
- Involved; but asking you to hold action on this petition until further notice.
- Involved; but no objections to the property change.
- Involved; but no objections to the property change...provided as easement of the full width of the public right-of-way (street, alley or other public place) is reserved.
- Involved; the nature of our services and the estimated costs of removing and/or rerouting such services are:

\_\_\_\_\_  
(Utility or City Department)

\_\_\_\_\_  
By

\_\_\_\_\_  
Title

\_\_\_\_\_  
Date

\_\_\_\_\_  
Area code – Telephone number

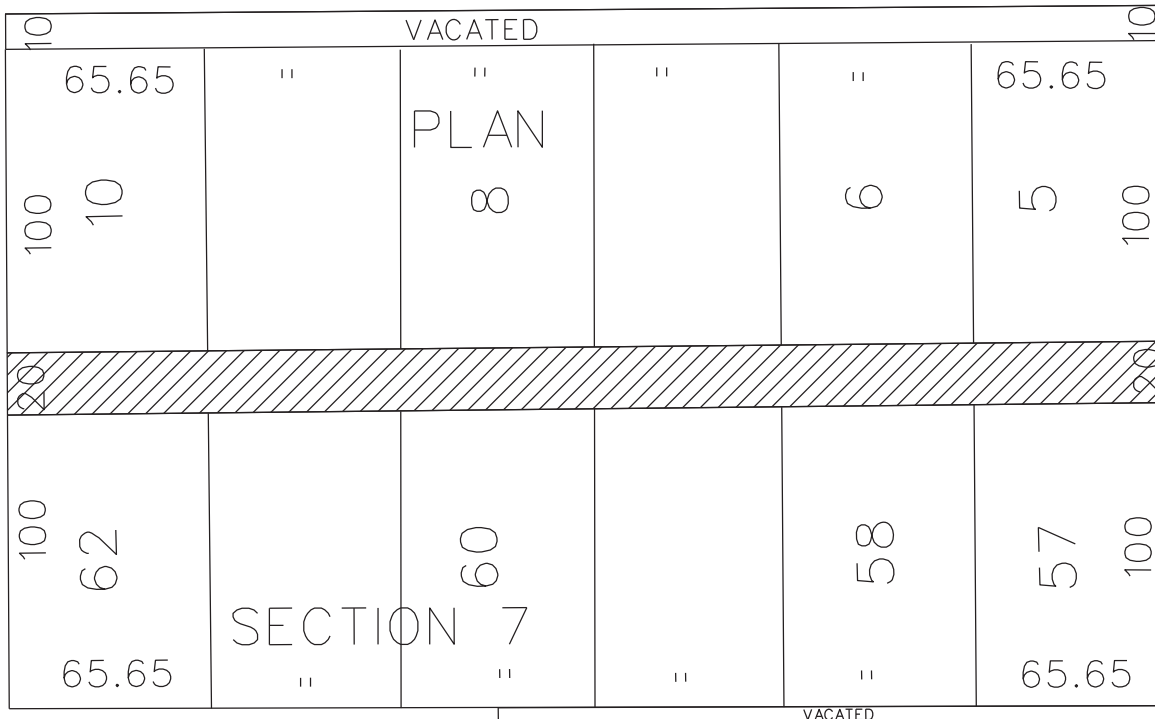
PETITION NO. 313  
 BEDROCK REAL ESTATE SERVICES  
 For ROCK VENTURES  
 1092 WOODWARD AVENUE, SUITE 200  
 DETROIT, MICHIGAN 48226  
 C/O VERONICA RICKETT  
 PHONE NO. 313 373-8700



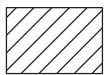
**BROADWAY AVE. 100 FT. WD.**

**E. GD. RIVER AVE. 60 FT. WD.**

**GRATIOT AVE. 60 FT. WD.**



**LIBRARY ST. 71 FT. WD.**



- REQUEST ENCROACHMENT  
 (With Seasonal Mobile Tables, Benches  
 Planters, Artwork and Carts)

CARTO 28 A

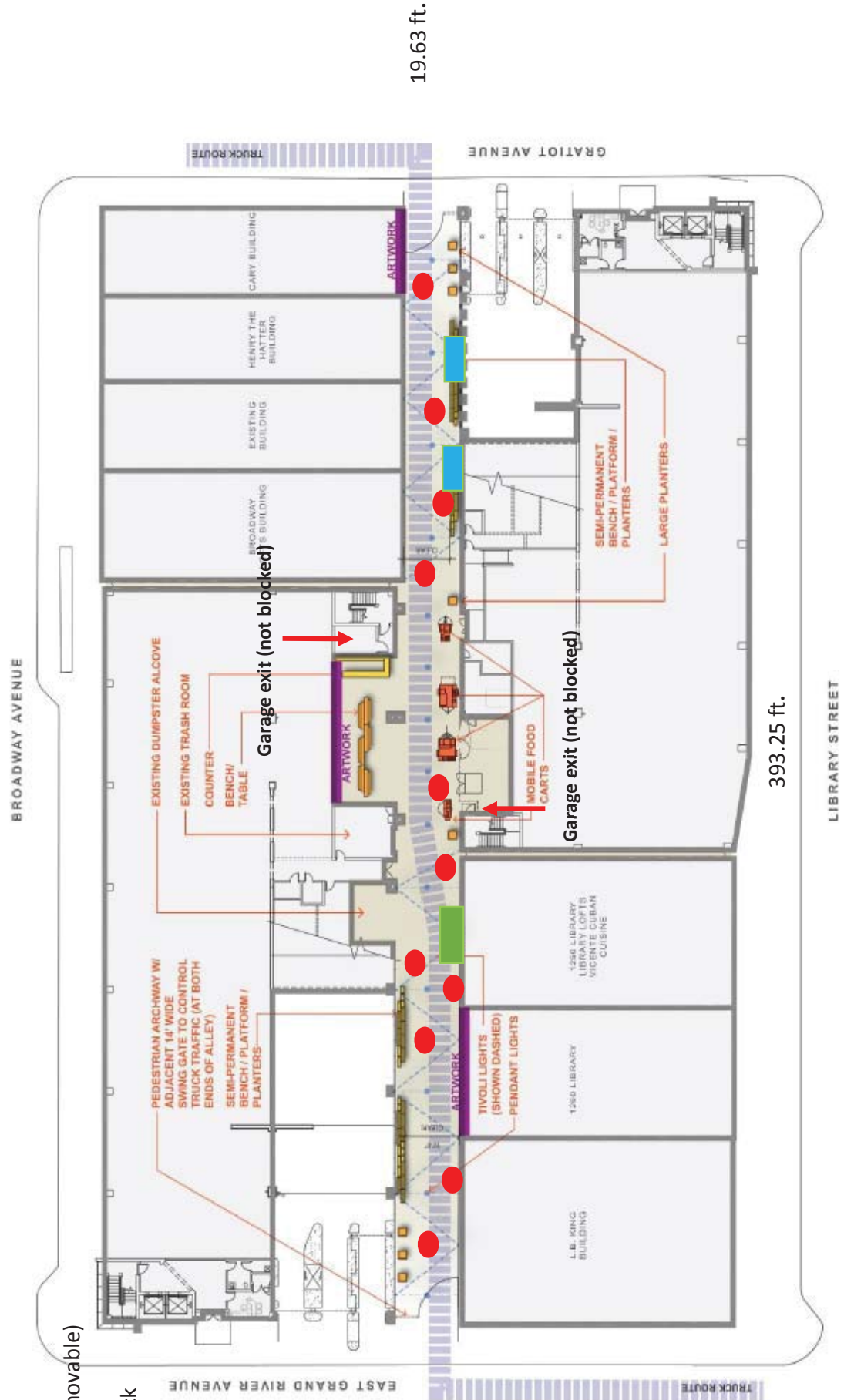
B					
A					
DESCRIPTION	DRWN	CHKD	APPD	DATE	
REVISIONS					
DRAWN BY	CHECKED				
DATE	APPROVED				
	WLW				
	05-04-15				

REQUEST ENCROACHMENT  
 THE EAST/WEST PUBLIC ALLEY, 20 FT. WD.  
 IN AREA BOUND BY  
 LIBRARY ST., BROADWAY, E. GD. RIVER AND GRATIOT AVE.  
 AT 1234 LIBRARY  
 (With Seasonal Mobile Tables, Benches  
 Planters, Artwork and Carts)

CITY OF DETROIT CITY ENGINEERING DEPARTMENT SURVEY BUREAU	
JOB NO.	01-01
DRWG. NO.	X 313

**Legend**

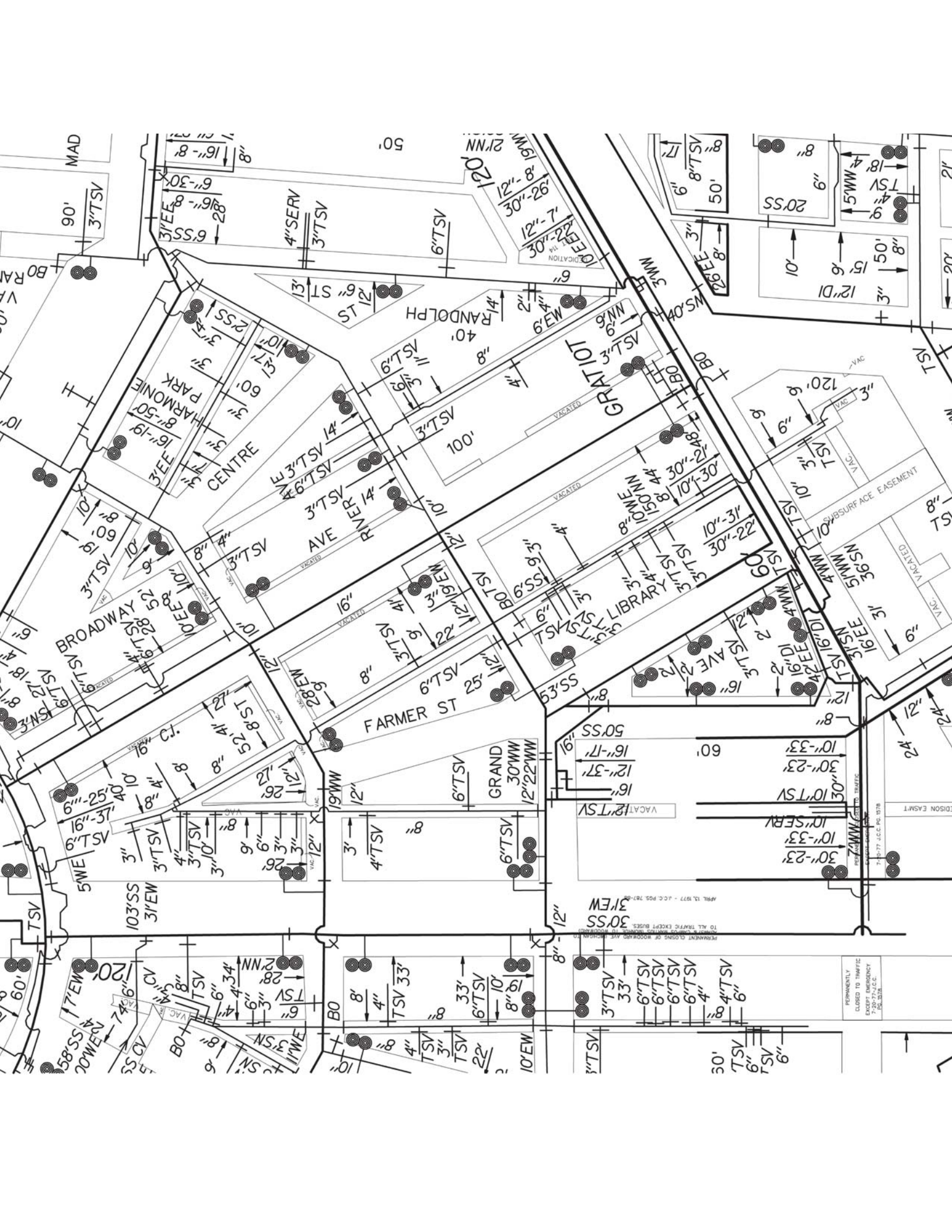
- Tables (movable)
- DJ
- Food Truck



## **PROVISIONS FOR ENCROACHMENT For Petition 313**

Detroit Water and Sewerage (DWSD) agree to the proposed encroachment subject to the fulfilling of the following provisions:

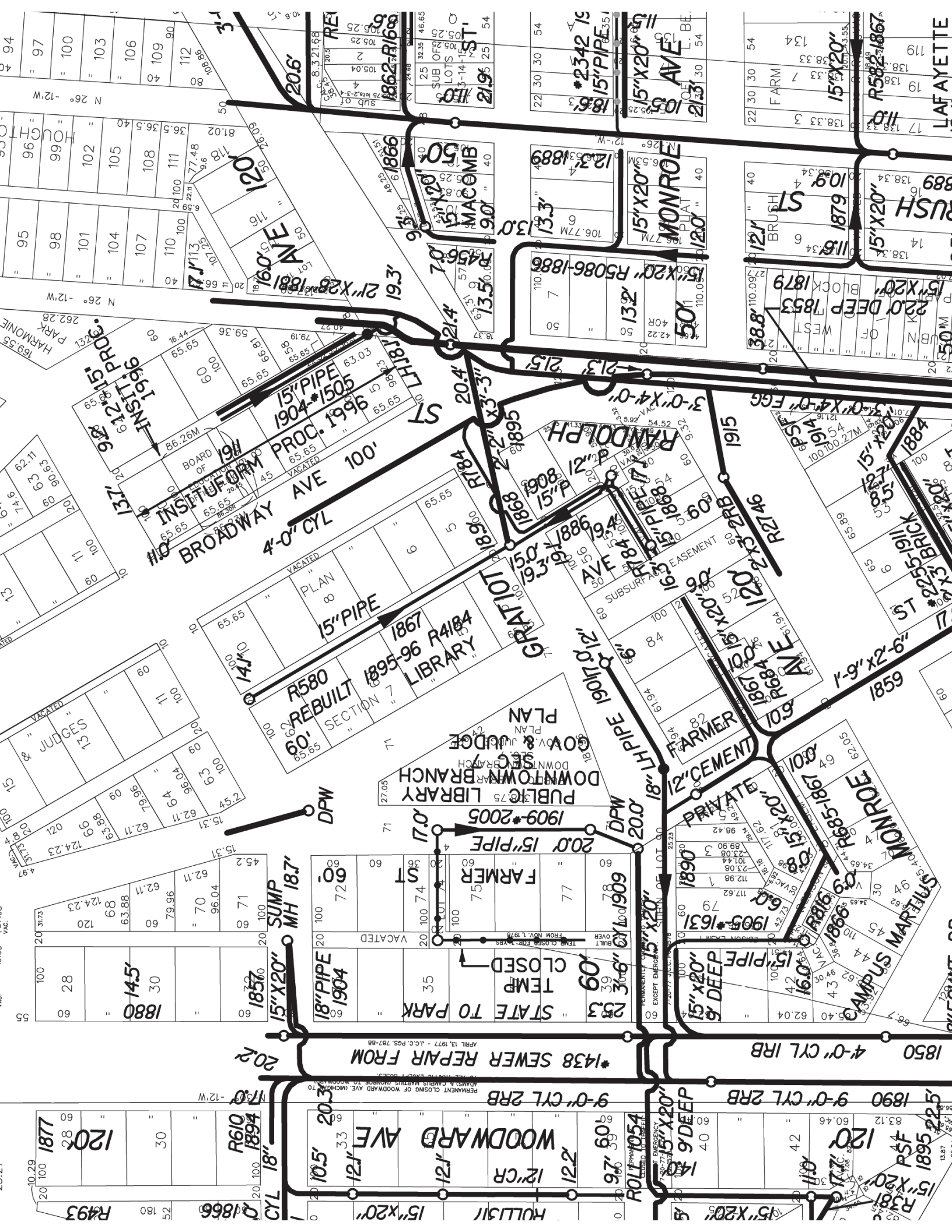
1. By approval of this petition the (DWSD) does not waive any of its rights to its facilities located in the right of way, and at all time, DWSD, its agents or employees, shall have the right to enter upon the right of way to maintain, repair, alter, service, inspect, or install its facilities. All costs incident to the damaging, dismantling, demolishing, removal and replacement of structures or other improvements herein permitted and incurred in gaining access to DWSD's facilities for maintenance, repairing, alteration, servicing or inspection caused by the encroachment shall be borne by the petitioner. All costs associated with gaining access to DWSD's facilities, which could normally be expected had the petitioner not encroached into the right of way shall be borne by DWSD.
2. All construction performed under this petition shall not be commenced until after five (5) days written notice to DWSD. Seventy-two (72) hours notice shall also be provided in accordance with P.A. 53 1974, as amended, utilizing the MISS DIG one call system.
3. Construction under this petition is subject to inspection and approval by DWSD forces. The cost of such inspection shall, at the discretion of DWSD, be borne by the petitioner.
4. If DWSD facilities located within the right of way shall break or be damaged as the result of any action on the part of the petitioner, then in such event the petitioner agrees to be liable for all costs incident to the repair, replacement or relocation of such broken or damaged DWSD facilities.
5. The petitioner shall hold DWSD harmless for any damage to the encroaching device constructed or installed under this petition, which may be caused by the failure of DWSD's facilities.



PERMANENTLY  
CLOSED TO TRAFFIC  
EXCEPT EMERGENCY  
7-20-77 J.C.C.  
D.C. 5218

PERMANENT CLOSING OF BROADWAY AVE. (INDICATED)  
TO ALL TRAFFIC EXCEPT BUSES.  
APRIL 13, 1977 - J.C.C. P.O.S. 787-8

7-10-77 J.C.C. PG. 1018



1850 4'-0" CYL IRB

1890 9'-0" CYL 2RB

1895 22'5" PSF

1895 120' X 20'

\*1438 SEWER REPAIR FROM

9'-0" CYL 2RB

WOODWARD AVE

15' X 20'

20.2'

10.5' 20.3'

12' 3.3'

12' 12.2'

1877

120'

30

R493

R610

1894

1866

CYL 18"

1877

28

60

1880

145'

30

60

1880

70

62.11

79.96

96.04

71

100

60

1857

15' X 20'

SUMP

MH 187

DPW

STATE TO PARK

TEMP

CLOSED

20' X 15' PIPE

1909

77

75

FARMER

1894

60

72.9

18' PIPE

1890

60

60

1890

1904

60

60

1894

1890

60

60

1890

1890

60

60

1890

1890

60

60

1890

1890

60

60

1890

1890

60

60

1890

1890

60

60

1890

1890

60

60

1890

1890

60

60

1890

1890

60

60

1890

1890

60

60

1890

1890

60

60

1890

1890

60

60

1890

1890

60

60

1890

1890

60

60

1890

1890

60

60

1890

1890

60

60

1890

1890

60

60

1890

1890

60

60

1890

1890

60

60

1890

1890

60

60

1890

1890

60

60

1890

1890

60

60

1890

1890

60

60

1890

1890

60

60

1890

1890

60

60

1890

1890

60

60

1890

1890

60

60

1890

1890

60

60

1890

1890

60

60

1890

1890

60

60

1890

1890

60

60

1890

1890

60

60

1890

1890

60

60

1890

1890

60

60

1890

1890

60

60

1890

1890

60

60

1890

1890

60

60

1890

1890

60

60

1890

1890

60

60

1890

1890

60

60

1890

1890

60

60

1890

1890

60

60

1890

1890

60

60

1890

1890

60

60

1890

1890

60

60

1890

1890

60

60

1890

1890

60

60

1890

1890

60

60

1890

1890

60

60

1890

1890

60

60

1890

1890

60

60

1890

1890

60

60

1890

1890

60

60

1890

1890

60

60

1890

1890

60

60

1890

1890

60

60

1890

1890

60

60

1890

1890

60

60

1890

1890

60

60

1890

1890

60

60

1890

1890

60

60

1890

1890

60

60

1890

1890

60

60

1890

1890

60

60

1890

1890

60

60

1890

1890

60

60

1890

1890

60

60

1890



