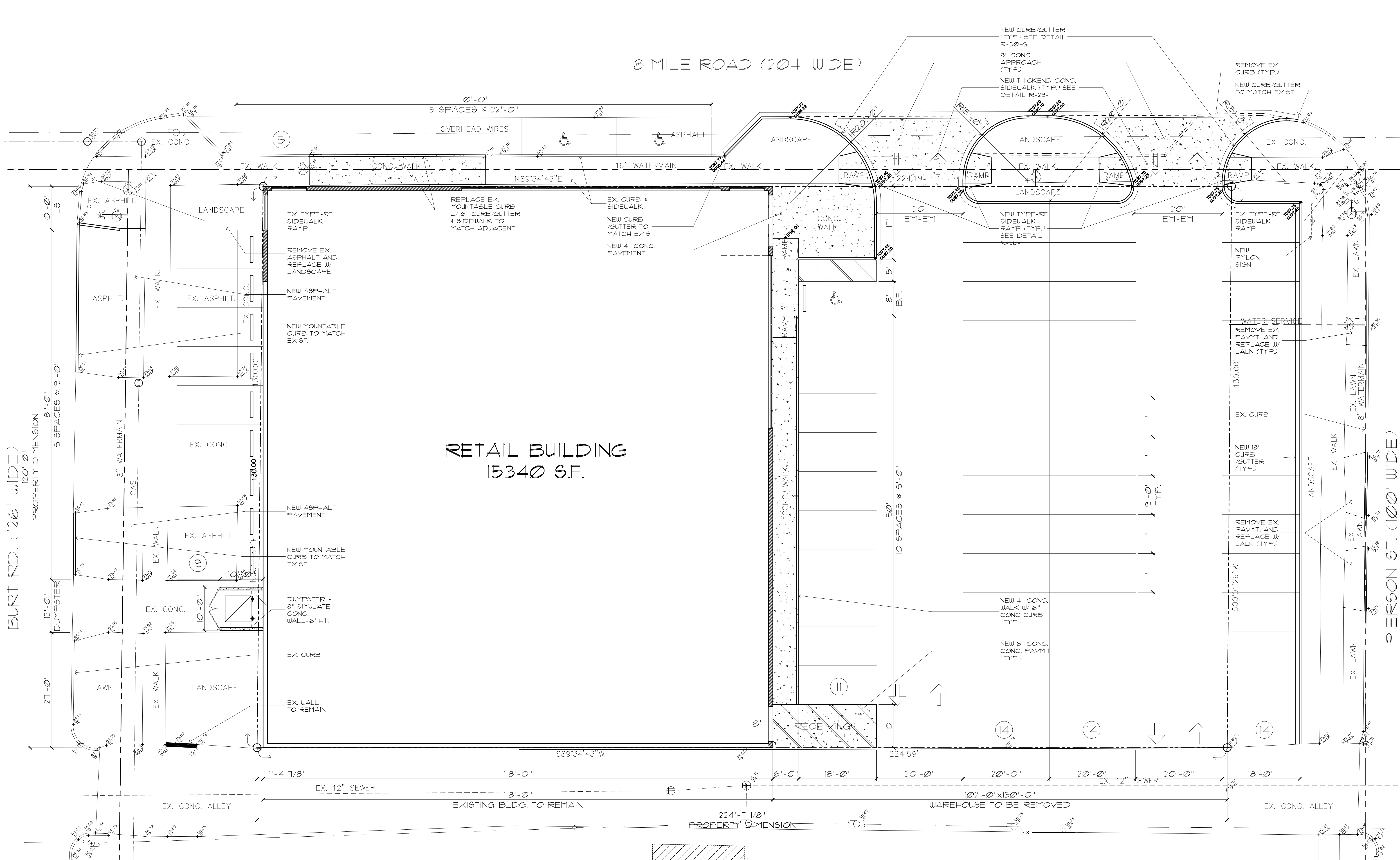


BURT RD. (126' WIDE)

8 MILE ROAD (204' WIDE)

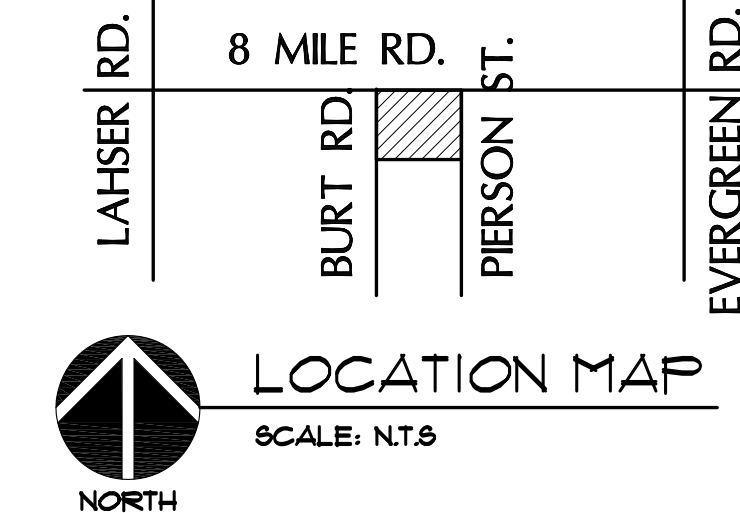
RETAIL BUILDING
15340 S.F.

PIERSON ST. (100' WIDE)



NORTH

SITE PLAN
 SCALE: 1" = 10'-0"



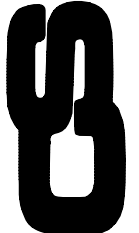
CONTACT:
 NAJAH GASSO
 (248) 867-1111

COPYRIGHT © 2014
 THIS DOCUMENT AND SUBJECT
 HEREIN ARE THE PROPERTY OF
 CHESTER STEMPIEN ASSOCIATES
 AND ARE NOT TO BE
 REPRODUCED OR TRANSMITTED
 IN ANY FORM OR BY ANY
 MEANS WITHOUT THE WRITTEN PERMISSION OF
 CHESTER STEMPIEN ASSOC.

PROJECT
RETAIL BUILDING
 20811 8 MILE ROAD,
 DETROIT, MI 48219

SUBJECT
MDOT - SITE PLAN

ARCHITECTS
CHESTER STEMPIEN ASSOCIATES • AIA
 24895 GREENFIELD ROAD SOUTHFIELD, MICHIGAN 48076
 (248) 557-2145 FAX: (248) 569-2856



ISSUED:
 MDOT
 01/05/2014

DRAWN VS, DW
 CHECKED C.R.S.
 APPROVED A.O.
 BDS
 CONSTR

DO NOT SCALE
 PRINTS - USE
 DIMENSIONS ONLY

JOB NO.
24056

SHEET
C.1

RETAIL
 BUILDING