

DTE Energy - Gas Co.  
Data Integrity and Technology  
One Energy Plaza, WCB-1836  
City of Detroit, MI 48226

February 3, 2015

**Richard Doherty, CED DPW Head Engineer**  
City Engineering Division, DPW  
65 Cadillac Square, Suite 900  
Detroit, Michigan 48226-2873

**RE: Petition #476**

**Dated: 1/27/2015**

- Not involved. **See Remarks**
- Involved: but asking you to hold action on this petition until further notice.
- Involved but have no objection to the property change - - provided that an easement of the full width of the public right-of-way (street, alley or other public place) is reserved.
- Involved: the nature of our services, and the estimated costs of removing, rerouting or abandonment of such all gas mains and/or services

**REMARKS:**

**Involved but have no objections to the property change, provided that the request to Encroach into E. Jefferson Ave at 6533 E. Jefferson Ave (with Fencing). Reason being is that, DTE Energy Gas Co. have existing gas main lines (6"-PLX-50# 1995) in the proposed area of easements. Otherwise, contact DTE Energy Gas Company Public Improvement Department: Laura Forrester at 313-389-7261 (Gas Planner), for the estimated cost of our services in abandoning/removing/ and/or relocating/rerouting, including the survey, design and drawing of our utilities. See enclosed strip prints for your use and information regarding our gas main locations.**

**Please abide by Public Act 174, three (3) working days before you dig, dial toll free MISS DIG at: 1 – 800 – 482 – 7171.**

**DTE Energy Gas Leak Emergency Phone Number: 1- 800 – 947 – 5000.**

Sincerely,

***RS* Russell E Thornton**

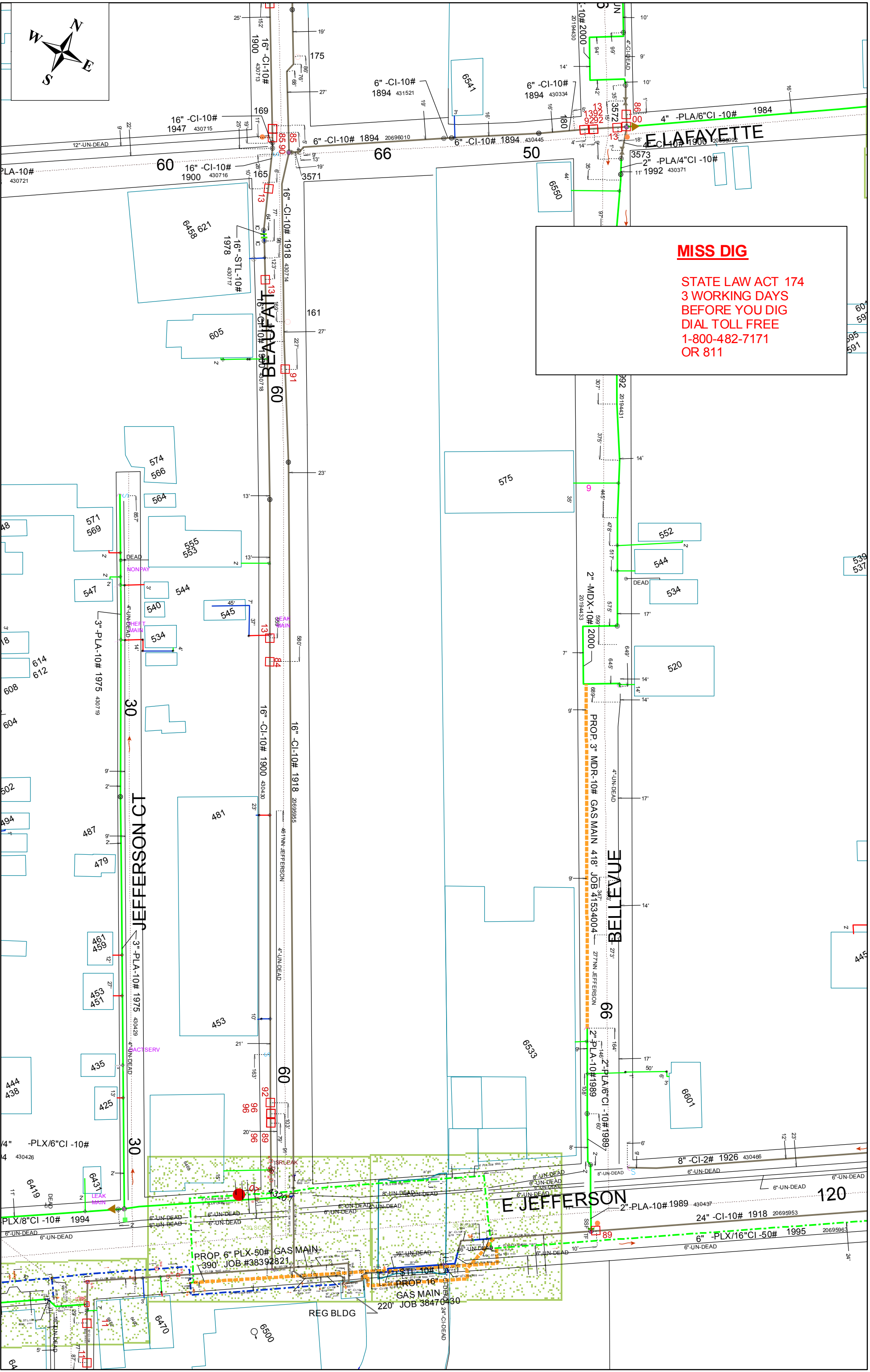
Drafter  
Data Integrity and Technology

RET/  
Enclosure



**MISS DIG**

STATE LAW ACT 174  
3 WORKING DAYS  
BEFORE YOU DIG  
DIAL TOLL FREE  
1-800-482-7171  
OR 811



# Gas GIS Legend

## Service Symbols

- EndCap
- LoopedService
- Section
- EFV Relief Valve
- AbandonedService

Aban. Service pipe

NOTE: Service line style is the same as the main it is tied into

## Customer Events

- Service Event
- CUTCAP (CCType, location)

## AbandonedGasPipesSymbol

- Abandoned Gas Device
- End Cap
- Section Symbol

## Gas Pipe Protection

- Casing
- Shield
- Sleeve

## Land

- Bridge
- DrainCreek
- Easement
- Lotline
- RailRoad
- RightOfWay
- Tunnel
- Water
- Street Centerline
- Building
- Landmark
- BrownField
- Known Sites of Environmental Contamination DEQ Dec2008

## CPAnode

- Single
- Multiple

## CP Rectifier

- Rectifier

## Test Point

- DOT
- Regular TW

## Tracer Wire

- Tracer Wire

## Gas Valve

- Main, Closed
- Main, Open
- Service, Closed
- Service, Open

## Regulator Station

- District
- Secondary
- Service

## Controllable Fitting

- PCF Pressure Control Fitting
- SSF Short Stop
- Stopple Fitting
- Distribution Tiein
- Subtransmission Tiein
- Transmission Tiein
- Branch
- Cap
- Coupling
- Ell
- Insulated
- Reducer
- Section
- Tee
- Transition
- <all other values>

## NonControllableFitting

- Branch
- Cap
- Coupling
- Ell
- Insulated
- Reducer
- Section
- Tee
- Transition
- <all other values>

## Material Type

- CU - Copper
- CI - Cast Iron
- PLA - Plastic
- STL - Bare Steel
- STL - Coated Steel
- PLA - Plastic, Joint Trench
- OTR - Other
- UN - Unknown
- WI - Wrought Iron
- <all other values>
- Inactive - all material types

## Main Lines Styles

- In Design Main (Proposed)
- Distribution Main
- Distribution - Joint Trench
- Subtransmission Main
- Transmission
- Exposed Pipe (Coated Steel)
- Pipe Lining (CI or WI)
- AbandonedGasPipe

## Other Symbols

- Drip
- Flow Arrow
- Foreign Utility Pipe
- Public Improvement
- Pressure Monitoring Device
- Leak Report - Leak Repair
- Automated Repairs
- LowPoint
- Summit

## Scaled Areas

- 10
- 30
- 50 SCALE